

(15<sup>th</sup>)

Eleventh Annual Report

# California Auxiliary

1891.





ELEVENTH ANNUAL REPORT  
OF THE  
CALIFORNIA BRANCH  
OF THE  
WOMAN'S AUXILIARY  
TO THE  
BOARD OF MISSIONS.

May, 1891.

SAN FRANCISCO:  
CUBERY PRINTING HOUSE, 587 MISSION STREET.  
1891.





"Bring them hither to me."

Mrs.

Miss

Miss

Miss

CHUR

GRAC

St. J

St. L

St. P

St. P

St. S

TRIN

A

Auxil

Junio

\*Aux

P

Auxil

Junio

o

Auxil



## OFFICERS.

### *President.*

MRS. R. W. HEATH,       -       -       1512 Taylor Street, San Francisco

### *First Vice-President.*

MISS ESTHER TOWELL,       -       2217 Figueroa Street, Los Angeles

### *Secretary.*

MRS. A. M. LAWVER,       -       1910 Webster Street, San Francisco

### *Treasurer.*

MISS J. E. HILL,       -       -       -       -       -       -       Berkeley

### *Vice-Presidents from Associated Parishes.*

#### SAN FRANCISCO.

CHURCH OF THE ADVENT,	Mrs. L. A. Garnett, 35 Essex Street
GRACE,       -       -       -       -	
ST. JOHN'S,       -       -       -	Mrs. F. H. Eichbaum, 928 Valencia Street
ST. LUKE'S,       -       -       -	Mrs. J. G. Clark, 1101 Green Street
ST. PAUL'S,       -       -       -	Mrs. G. P. Rixford, 1713 Pierce Street
ST. PETER'S,       -       -       -	Mrs. H. T. Graves, 204 Lombard Street
ST. STEPHEN'S,       -       -       -	Mrs. P. C. Hyman, 1608 Turk Street
TRINITY,       -       -       -       -	

### *Secretaries of Parish Branches.*

\*Branches formed after Eleventh Annual Meeting.

#### ALAMEDA.

Auxiliary       -       -       -       -       -       -       -	Christ. Mrs. C. H. Paxson
Junior Auxiliary       -       -       -       -       -       -       -	Miss Lily Denein

#### BAKERSFIELD.

*Auxiliary       -       -       -       -       -       -       -	St. Paul's. Mrs. Snook
--	---------------------------

#### BERKELEY.

Auxiliary       -       -       -       -       -       -       -	St. Mark's. Miss Elizabeth S. Wade, Box 195
Junior Auxiliary       -       -       -       -       -       -       -	Miss Annie Long

#### CORONADO.

Auxiliary       -       -       -       -       -       -       -	St. Peter's. Miss Emma S. Balch
---	------------------------------------

FOWLER.		St. Michael's.
*St. Michael's Guild	- - - - -	Mrs. Stewart
FRESNO.		St. James'.
Auxiliary	- - - - -	Mrs. D. O. Kelley
Junior Auxiliary	- - - - -	Miss Jessie E. Rowe
FRESNO FLATS.		
Auxiliary	- - - - -	Mrs. Margaret Taylor
Junior Auxiliary	- - - - -	Miss Emma Taylor
HAYWARD.		Trinity.
Auxiliary	- - - - -	Mrs. Ada Clakes
LOS ANGELES.		St. Paul's.
Auxiliary	- - Miss Esther Towell, 2217 Figuerora Street	
Junior Auxiliary	- S. S.—Miss Sadie Whitehead, 426 E. 7th Street	
LOS ANGELES.		Ellis Ave. Sunday School.
Junior Auxiliary	- Little Missionaries—Miss Katharine McFarland	
E. LOS ANGELES.		Epiphany.
Auxiliary	- - - - -	Miss Leone Simmonds
NATIONAL CITY.		St. Matthew's.
*Auxiliary	- - - - -	Mrs. F. S. Earle
OAKLAND.		St. Andrew's.
Auxiliary	- - - - -	Mrs. A. R. Guppy, 1266 8th Street
OAKLAND.		St. John's.
St. John's Guild	- - - - -	Miss S. A. Rising
OAKLAND.		St. Paul's.
Auxiliary	- - - - -	Miss M. A. Hawley, 522 Knox Place
Junior Auxiliary	- Mary Abbott Guild	Miss Manie Kent,
	1259 Alice Street	
E. OAKLAND.		The Advent.
Ladies' Aid Society	- Mrs. F. W. Davis, 515 E. 15th Street	
OCEANSIDE		Grace.
with ESCONDIDO.		Trinity.
FALL BROOK AND SAN LUIS REY.		
Auxiliary	- - - - -	Mrs. W. E. Jacob, Oceanside



PACIFIC GROVE.						St. Mary's-by-the-Sea.
Auxiliary	-	-	-	-	-	Mrs. F. J. Babbitt
PASADENA.						All Saints'.
Auxiliary	-	-	-	-	-	Mrs. A. C. Armstrong
RIVERSIDE.						All Saints'.
Auxiliary	-	-	-	-	-	
SALINAS.						St. Paul's.
Junior Auxiliary—M. C. L.	-	-	-	-	-	Miss Elsie Chestnut
SAN BERNARDINO.						St. John's.
Auxiliary	-	-	-	-	-	Mrs. W. Creswell Mushet
SAN DIEGO.						St. Paul's.
Auxiliary	-	-	-	-	-	Miss E. Woodward, Fifth and Olive Streets
Junior Auxiliary	-	-	-	-	-	Mrs. C. F. Endley, 1826 6th Street
SAN FRANCISCO.						Grace.
Ministering Women and Children—	Miss S. Morgan, 2312 Clay St.					
St. Agatha's Guild	-	-	-	-	-	Miss Hutchinson, 1412½ Larkin Street
SAN FRANCISCO.						
Mizpah Club	-	-	-	-	-	Mrs. J. Bertz, 2215 Fillmore Street
SAN FRANCISCO.						Old Ladies' Home.
St. Anna Society	-	-	-	-	-	Miss J. E. Hill, Berkeley
SAN FRANCISCO.						St. Luke's.
Auxiliary	-	-	-	-	-	Mrs. R. W. Heath, 1512 Taylor Street
Junior Auxiliary	-	-	-	-	-	Miss Mabelle Hall, 1317 Hyde Street
SAN FRANCISCO.						St. Paul's.
*Junior Auxiliary	-	-	-	-	-	Miss Eleanor Gay, 1613 Devisadero Street
SAN FRANCISCO.						St. Peter's.
Junior Auxiliary—Soldiers of the Cross						
SAN FRANCISCO.						Trinity.
Parochial Missionary Society	-	-	-	-	-	Miss Jean Harwood
SAN GABRIEL.						Our Saviour.
*Auxiliary	-	-	-	-	-	Mrs. Wm. D. Stephens
SAN RAFAEL.						St. Paul's
Auxiliary	-	-	-	-	-	Mrs. Vincent Neale

SANTA BARBARA	Trinity.
Auxiliary - - - - -	Mrs. D. D. Logan
SANTA CRUZ	Calvary.
Auxiliary - - - - -	Mrs. C. O. Tillotson
SAUSALITO.	Christ.
Auxiliary - - - - -	Mrs. F. W. Reed
STOCKTON.	ST. JOHN'S
St. John's Guild, -	Miss Chalmers, Hunter and Linsey Sts.
VENTURA.	St. Paul's
Auxiliary - - - - -	Mrs. C. H. Whitney

## The Church Periodical Club.

### *Vice-President for the Pacific Coast.*

MRS. JOHN NORTON POMEROY, - 1424 Clay Street, San Francisco

### *Correspondent, California Branch.*

MISS ANNA G. CLARK, - - - 1101 Green Street, San Francisco

### *Librarians.*

Bakersfield, St. Paul's,	- - -	MISS KATHERINE TAYLOR
Los Angeles, St. Paul's,	- - -	MISS E. R. MITCHELL
San Diego, St. Paul's,	- - -	MISS L. WOODWARD
San Francisco, Advent,	MRS. L. A. GARNETT,	35 Essex Street
" " Grace,	- - -	MISS MORGAN
" " St. John's	-	MISS HOMER 227 San Jose Ave.
" " St. Luke's,	-	MRS. L. E. BAYLOR, Black Point
" " St. Paul's,	-	MRS. MARGARET H. FOSTER
" " St. Peter's,	-	MISS GRAVES, 204 Lombard Street
" " St. Stephen's,	-	MISS C. H. JONES, 931 18th Street
Santa Ana, Church of the Messiah,	- - -	MISS LESLIE



# REPORT

OF THE

## Eleventh Annual Meeting,

April 25th, 1891.

---

The Eleventh Annual Meeting of the California Branch of the Woman's Auxiliary was held at St. Peter's Church, San Francisco, on Saturday, April 25th. The opening service was read by Bishop Nichols, who then greeted those assembled, and at the request of the President took the chair.

The roll-call showed a representation of thirteen parish branches. The reports of the Secretary and Treasurer were very encouraging, showing a growth in the work, and its extension on lines suggested by Bishop Nichols in special meetings which he had called. St. Paul's, San Diego, was declared to be the banner parish.

The offertory which was taken after the Treasurer's report, was devoted to general expenses. The President read a letter from Mrs. Kip greeting the ladies and regretting her inability to be with them.

The election of officers was next on the programme. The President, First Vice-President, Secretary and Treasurer, were

re-elected with perfect unanimity. Vice-Presidents from the city parishes were elected on nomination of the representatives of the respective parish branches.

Under the head of new business, Mrs. Lawver moved that new branches in missions be allowed to report as Auxiliary work any church furnishings or Sunday school supplies given by them to their own missions during the first two years of their existence. Carried.

On combined motion of several ladies the officers were given more latitude in meeting central expenses.

Bishop Nichols called on the Rev. J. A. Emery to speak about St. Phœbe's Home. He gave a history of the institution, but might have omitted mention of the unfurnished condition of its house, had not Rev. C. L. Miel supplemented his remarks.

The Secretary had at hand membership cards for the Junior Auxiliary, which is steadily growing.

Bishop Nichols called on the Rector of St. Luke's for a few words, in which he expressed his pleasure that the work was increasing, and for his parish cheerfully resigned the banner to St. Paul's, San Diego.

After the Doxology and the Bishop's benediction, the meeting adjourned to assemble in Los Angeles on the following Tuesday, at 8 P. M.

MARY A. HAWLEY,  
Secretary of the Meeting.

## THE ADJOURNED MEETING.

April 28th, 1891.

In St. Paul's Church, Los Angeles, on the evening of April 28th, a large congregation took part in the Adjourned Meeting, the Assistant Bishop presiding.



After the opening service, the Secretary and Treasurer reported the year's work. The by-law providing special organization for branches in new missions was approved ; and it was resolved to join the San Francisco societies in any plans proposed by Bishop Nichols for holding general missionary meetings.

The Rev. C. S. Cook, of South Dakota, gave an address on Missionary Work among the Indians, which won new friends for his people, and made the Auxiliary his debtor for an unusual pleasure.

At this service and at the informal meeting on the following Friday afternoon, twenty churches were represented. The collection was for general expenses.

This first convention meeting in the Southern Convocation brought together many workers for the first time. The hospitalities of "convention week" were a means of so prolonging Auxiliary intercourse that as delegates dispersed, taking with them diocesan offices, or themselves carrying to their homes new enthusiasm, the adjourned meeting threatened to become a perpetual meeting, and can have adequate report only in the records of the opening year.

SUSAN S. LAWVER, Secretary.

## ELEVENTH ANNUAL REPORT.

---

The eleventh year of the California Auxiliary, whose close in this early Easter-tide, we to-day anticipate, is marked by increased activity in all avenues of effort.

Bishop Nichols has called together four general meetings at as many different places, and wherever he has gone, he has, when possible to do so, met our women and children.

By constant teaching of right motives, and clear direction to practical issues, he has raised and fortified the whole fabric of our organization; and, more closely bound together than ever before, we look out on the struggles of the coming year with the high courage of a household at unity in itself, and in alliance with all good neighbors.

Never before have our workers been so devoted or the quality of the work so good.

Peeping into "Boxes," the critical eye of a diocesan inspector sees in all wiser selection, more thorough attention to detail; and how brightly has burned the Lamp of Sacrifice, He knows, for Whose altar in many an obscure mission has been made the broidery and fair linen—the very crown and flower of Auxiliary needlework.

Five new branches bring the number up to thirty-three. Nine "Juniors" added to the three reported last year, and three other societies working with us, make the number of societies reporting through us to-day fifty.

This statement will explain brevity in noticing each.

In San Francisco the work of the Associated Parishes is done in such close co-operation with Parochial Branches, that only as a



whole can it be correctly estimated. The Association has met from church to church eighteen times. Its meetings are the opportunity of the visiting missionary, and a means of interchange in many helpful details.

In August, at St. Luke's Church, Mrs. Willoughby Cummings and Miss Patterson, of the Toronto Branch, were welcomed by a large gathering of women from this and neighboring congregations and left charming memories of this first touch of sisterly hands from across the border.

On March 9th, at St. Paul's Church, many women had a long anticipated delight in meeting Bishop Hare in the few hours he could spare us on his way to Japan. He told of his Indian work, supplementing his address of the previous evening at Trinity Church.

The Rev. Thompson, who is doing such faithful service to his colored brethren of St. Thomas', Chicago, visited the meeting at Trinity on September 17th; and Miss Goepf, *en route* to Japan, was with us at St. Luke's on September 29th.

Of the eight parishes in this Association no two work alike.

The Church of the Advent does its work entirely in the Association, with the exception that a chapter of the Parish Guild has for its sole object the making and remaking of garments for the children in our Church institutions. The economy and real comfort evolved, are none the less valuable that they are not estimated in dollars and cents.

In Grace Church, two branches hold regular meetings. The Ministering Women and Children have contributed to missionary boxes and to Church institutions in value \$149.95—and St. Agatha's Guild, supporting St. Agatha's Room in Maria Kip Orphanage, \$90.30—with cash, \$5. Total by Grace Branches, \$245.25.

In St. Luke's, missionary interest permeates parish life. The whole Parochial Society, with its many chapters contributing through the Missionary Committee, constitutes the Auxiliary—a fine example of the principle of the Toronto branch—the existing



parish society the missionary society, without separate organization.

St. Luke's Auxiliary reports—boxes, \$617.21; cash, \$653.00; total, \$1,270.21.

The Sunday School is an arm of the service, subject to the influence of the Missionary Committee, and reports to the General Board through the Auxiliary, \$13.00.

On the 19th of January a band of young girls—companions—meeting at the home of one of their number, organized as St. Luke's Junior Auxiliary. Two ladies have direction of the missionary studies and of the sewing. They have a mite box—"The Bishop's Box,"—which is given him at the end of the year for the object he may select. At Easter it yielded \$6. Their gift to missionary boxes added, makes the sum of their offering \$36. Total by St. Luke's, \$1,319.21.

The women of St. Paul's Church work altogether in the Association. The Young Ladies' Guild contributed \$3 to boxes.

St. James', Point Lobos, a mission of St. Paul's, gave its first collection, \$3, to the "Auxiliary \$800."

In St. John's Church, during Advent and Lent, Parochial Societies assume a share of the work, which is reported through the Association, and aggregates \$62.20.

St. Peter makes occasional proffers of help through its Parochial Society, giving in this way, as reported by the Association, \$43.45.

"The Soldiers of the Cross" are our youngest Juniors. They have named themselves, and elected their officers out of their ranks. Under two young ladies, their Sunday School teachers, they are to study about and work for missions. Are all the missionary boys willing to work without the girls, in St. Peter's Parish?

St. Stephen's has no local organization, but the M. C. L. does much work outside as well as inside the parish, part of which, to missions, it reports through us—\$37.00. Other societies give frequent help.

In Trinity Parish, St. Mary's Guild keeps up its gifts of needle-



work and embroidery through the Association, valued this year at \$21.56.

In Epiphany-tide, 1889, was formed in Trinity Church the Parochial Missionary Society, devoted entirely to domestic and foreign fields. It did good work that year, and on February 17th, 1891, became a branch of the Diocesan Auxiliary. Money is raised by subscriptions asked of the congregation. Boxes are made up during Lent and Advent, and cash is voted at discretion. Its last year's work sums—boxes, \$306.85; cash, \$75; total, \$381.85.

In the Old Ladies' Home the society has not been active, but a member has given to Easter boxes \$2.

The Mizpah Club is always cordial in giving a share of its interest to the mission field, and contributed at Easter, to a box, \$11.95.

The new parish of St. Mary the Virgin, reports "good will and best intentions," which we can interpret to mean only a speedy joining of the ranks.

The organization known as the Associated Parishes of San Francisco, has given boxes valued at \$633.80; cash, \$771.67, total, \$1,405.47. Branches in San Francisco, a total of \$2,003.26. Total in San Francisco, \$3,408.73.

In Christ Church, Alameda, Auxiliary activity has awaited the completion of the beautiful new church, due largely to the labors of women. It has given \$10 in cash. But the young people have been more actively interested with us. A Junior Auxiliary organized in September has made a nice rag carpet for an institution and helped in other ways. The value of this work is not reported.

In the Advent, East Oakland, although there is no Auxiliary Society, the rector's sympathy and the ladies' interest continue to bear fruit, and we have received from this parish—cash, \$13.10; boxes, \$23; total, \$36.10.

Missionary work in St. Andrew's, Oakland, had impetus in Miss Emery's visit. This branch reports—boxes, \$19.05; cash, \$37.15; total, \$56.20.



St. John's, Oakland, also, has increased its work. The ladies have given to boxes, \$30.40 ; cash, \$23.75 ; total, \$54.15. The Sunday School has given to a beneficiary in Bishop Armitage Orphanage, \$30.00 ; and, by the Infant Class, \$2, to the "Auxiliary \$800"—which, with a Christmas gift to a mission Sunday School, gives a total of \$33.60. Total by St. John's, Oakland, \$87.75.

In St. Paul's, Oakland, the Guild is virtually the Auxiliary, as its work is almost entirely for missions ; and, besides giving time and money, it is always ready to "take trouble" in the aid of any general work. It reports—boxes, \$120.50 ; cash, \$489.85 ; total, \$610.35. The Sunday School has taken a lively interest in objects presented by the Diocesan Secretary, and has given through the Auxiliary, to Sunday Schools, supplies valued at \$21.35 ; cash, \$2.50 ; total, \$23.85.

The Mary Abbott Guild, our first children's society, is now a Junior branch, and re awakened to its duty—giving in boxes, \$20.50 ; cash, \$14 ; total, \$34.50. Total by St. Paul's, \$668.70. Total by Oakland Branches, \$848.75.

St. James', Fresno, reports—cash, \$10. The Sunday School Juniors—cash, \$30 ; a box, \$10 ; total, \$50.

At Fresno Flats, St. Agnes' Guild has, by giving entertainments, earned money to keep up the Reading Room and Sunday School, with very little help in money from outside. And besides this—which cannot enter into our accounts, but which may be mentioned here as aggregating \$63.75—has done acceptable work for the Church institutions. The Mountain Gleaners are, like our Juniors everywhere else, eager little workers. They have collected over seven hundred cancelled postage stamps and sent them to an English charity. They have worked diligently for Christmas and Easter boxes, and sent \$5.10 to an Orphanage. By St. Agnes Guild—boxes, \$25 ; cash, \$10.50 ; total, \$35.50. By the Juniors—boxes, \$17.30 ; cash, \$5.10 ; total, \$22.40 ; Easter collection of the Sunday School for the fund for Widows and Orphans of deceased clergy, \$1.80 ; Total by Fresno Flats, \$59.70.

The Auxiliary at Trinity, Hayward, sent beautifully made gar-



ments to the Easter box packing, valued at \$25, and added a cash gift of \$5; total, \$30. The package from the Sewing School had no separate value affixed, but the laboriously taken stitches told hopefully of latent powers working in these incipient Juniors.

In St. Paul's, Los Angeles, our Vice-President has more than kept up the record of the Senior Society, and has done all in her power to bring neighboring parishes into line.

The ladies of the Ascension, Boyle Heights, gave of their work to the Easter boxes, and this mission, with the Epiphany in East Los Angeles, contributed \$1 each to the Emergency Fund. But here the greatest advance is among the Juniors. The Little Missionaries of the Ellis Avenue Sunday School report—cash gifts, \$46.29; boxes, \$72.10; total, \$118.39—and send in a model report.

The Juniors in St. Paul's Sunday School, organized June 15th, 1890. The variety of their interests shows how well they have been taught, and Sunday Schools desiring to enter the Junior department will do well to confer with the Secretary. They report—boxes, \$22.75; cash, \$12.20; total, \$34.95.

The Auxiliary in St. Paul's, the parent society, reports—boxes, \$213.18; cash, \$120.05; total, \$333.23. Total by St. Paul's, Los Angeles, \$486.57.

St. Mary's-by-the-Sea, Pacific Grove, continues a peculiar interest to the Woman's Auxiliary, and this year has made its best gift to the Church, our first candidate for the order of Deaconess. Its more easily assessable contributions are—boxes, \$62.25; cash, \$5.50; total, \$67.75.

All Saints, Pasadena, which usually sends its gifts through the diocesan officers, made up this year its first missionary box. This, with a box sent as hitherto, is valued at \$90. Cash gifts are \$41, including the first Auxiliary offering to St. Phoebe's Home, \$6. Total by Pasadena, \$131.

In All Saints, Riverside, the Auxiliary has had as director Miss Maynard, our first Secretary. We shall expect it to continue the good results of this good leadership in the coming year. It



reports—boxes to diocesan missionaries, \$114.60; cash, \$2; total, \$116.60.

In Salinas, the M. C. League has become a Junior branch, and has worked for the institutions, but puts no value on its boxes.

St. Paul's, San Diego, sends such a wonderful report of church furnishings, fat boxes, good current coin, that I will at once do it best justice by saying it is this year ahead in the race, and with its record of \$1,650.51 carries the banner. Of this the Juniors contributed \$53.95. Value of boxes, \$694.86; cash, \$955.65; total, \$1,650.51.

The Secretary in San Diego has, as our Vice-President in Los Angeles, made every effort to carry the Auxiliary into the active life of smaller congregations around her. In July, branches were formed in Trinity, Escondido, and in Grace, Oceanside, which work during Lent. Trinity reports—boxes, \$15; cash, 70 cts.; total, \$15.70. Grace, Oceanside—boxes, \$12.30; cash, \$3.40; total, \$15.70.

St. Peter's, Coronado, organized in December, with eight members, and gives the third Thursday in the month. It sent at Christmas a box to a missionary valued at \$38.30.

St. James, San Diego, contributed \$1 to the Emergency fund. Total by branches in and around San Diego, \$1,721.21.

The fourth year of the branch in St. Paul's, San Rafael, shows no diminution of interest, and an increase in gifts. It has sent boxes valued at \$223.20; cash, \$35; total, 278.20.

In Trinity, Santa Barbara, the Auxiliary works as hitherto, and has exceeded its previous record. Boxes, \$130; cash, \$16; total, \$146.

The Santa Cruz branch sent \$3.75 to a clergyman.

The Auxiliary in Christ Church, Sausalito, has done a varied work, far excelling any previous year, and reports boxes valued at \$103; cash, \$41; total, \$144.

In Stockton, St. John's branch has kept up its growing work, sending out boxes valued at \$136; cash, \$12; total, \$148. Owing to illness and removals no report of the Young Gleaners has been sent.



St. Paul's, Ventura, has been interested in Church Institutions, to which it has sent boxes valued at \$12.50, which, with a cash gift of \$5, sums \$17.50.

In addition to the work of these branches, St. Peter's, Walnut Creek, has contributed to a box in value \$1.

The missions at Selma, Bakersfield and Centerville, have each given \$5; Hanford, \$1; Tulare, \$3.90; Pomona, \$1; and National City, \$1.

Diocesan receipts have been \$429.93.

The sum of the work for the year ended is \$8,232.69.

But these figures, representing the concrete things, boxes and cash, pregnant as they are with memories of the elaborate detail in gathering and dispensing, that always characterizes woman's work, do not bring to your mind the chief labors of the year. It has been a time of seed-sowing, and the quickening of many germs has made a multiplied demand on all our resources.

In August, Bishop Nichols called about him, at Grace Church, the churchwomen of the neighborhood, and after his first official greeting to the society, laid before it plans for the extension of the work. He asked for \$800 to supplement the grant of the Board to the salary of the Diocesan Missionary—for greater interest in the diocesan paper, which should aid him to make it a missionary agency—and suggested a General Missionary Meeting to be held in San Francisco during the season about St. Andrew's day.

Later, in Oakland, at St. Paul's Church, he gave direction in these and pertinent matters. Similar meetings were held by the Assistant Bishop in San Diego and Los Angeles, as general in scope as California geography will permit.

At the August meeting we decided to try to raise the \$800 asked for the salary of the Diocesan Missionary, which through friction in repetition has been dubbed the "Auxiliary \$800."

\$572.25 has been given by twenty-three parishes and missions, and we look to the remaining eighty-nine congregations for the rest.



Greater interest has been taken in the Church paper. But to make the department of Woman's Work a success we need something more than a report of work and meetings; and to get all the good we can out of the paper it should be taken by every churchwoman in the diocese, and its contents discussed at home and in the Church Society as are the daily news of the secular paper.

In November, the General Missionary Meeting in San Francisco, was a success greater than we had dared to hope.

Bishop Paddock came from the North and the Rev. Mr. Bugbee from the South, to help lonely San Francisco feel a little of the bigness it is credited with so generally.

The large congregations, well sustained interest, and vivid speeches, are bright in our memories to-day, and the children's service is a recollection that always stimulates us to try it again.

At the Convocation in St. John's Church—one of the missionary meetings—the Church Periodical Club was explained by the Vice-President for the Pacific Coast, and diocesan work and a Training House in San Francisco for Foreign Missionaries, were discussed.

At all these meetings, and by every other available agency, the Junior Auxiliary has been presented to our Branch. Mrs. Pomeroy has found it difficult to organize the C. P. C., but now that a special Secretary for California has been appointed, she will have a beginning, if we mistake not Miss Clark's ability to carry out our plans.

The Junior Auxiliary will grow, if our women will take the suggestions afforded by the workings of existing societies and apply them to local needs.

On February 4th, the Quiet Day at St. Stephen's, was by the universal verdict of the large congregation, better than ever before—a much larger attendance, a good collection, and what, in memory of past Quiet Days, we almost shrink from saying, more in the service. Perhaps it is only that the day was larger in all ways, and thus like those that had gone before, perfect in itself. The Rev. E. J. Lion failed to hold another, in San Diego, only because of the illness of the Rector at the time appointed.



The frequently discussed plans for some form of consecrated service, and for a Training House in San Francisco for Foreign Missionaries, are likely to have a common solution. Quickly on the acceptance of Miss Reed as candidate for Deaconess' orders, followed the proffer of the Rev. and Mrs. Emery to begin the work, and on April 8th, St. Phoebe's Church Training Home was opened to be the opportunity for these as the Assistant Bishop may direct.

The congregation assembled there epitomized Woman's work in the diocese, not one branch of its service lacked representation. St. Phoebe's Home is at once the end and the beginning of many Auxiliary hopes and plans, and a proof that behind many failures and much weakness there is something permanent in this Auxiliary—a society that has no material foundation, whose possessions are the gleanings of the day, only that they may be the gifts of the morrow.

In this very intricate work, which I have tried to report as clearly as possible, you can hardly have failed to note four centres of growth—San Francisco, Oakland, San Diego and Los Angeles. This would at once point to a change in our organization, with these points as energizing centres. But no diocesan lines co-exist with these conditions; the Auxiliary, provedly, has known “no North and no South;” her workers, whether Vice-Presidents, Secretaries, or privates in the line, are no sticklers for rank, or respecters of persons; the woman and her opportunity have made the work.

In our progress from centres outward, despite organization, may be found good argument for the principle, “in every city the Bishop.” But we are not prepared to be irreverent, even in imagination, and to suggest the multiplication of Bishop Nichols by four—and the California Auxiliary, with all its dread of high organization, is not one of those back-boneless individuals that increase by division.

The things that have been, still may be. This growth has come from the cordial interest of the clergy and the devotion of women.

These factors are working in other centres, and they only are needed to make of every parish and mission in the diocese a shining place.

With the Bishop directing diocesan officers, the parish priest controlling local societies, harmony and unity of purpose are assured.

And then in every parish and mission we want some one woman who cares. Somebody who cares to know all about the Church Periodical Club, the Junior Auxiliary, what a Deaconess may be, and what is going on in the mission field. Somebody who cares that her own life and the lives of her sisters in the little congregation be not dwarfed to its narrow compass. Somebody who cares for the great issues to which she can lend her little energies and feel their thrill and power. Somebody who cares, not that things do not just suit her in this parish or that priest—but that anywhere in all the world there is one soul astray, one lamb unfolded. Not necessarily somebody clever, or very good even, only everywhere somebody who really cares.

Respectfully submitted,

SUSAN S. LAWVER, Secretary.



# Treasurer's Report.

## RECEIPTS.

Alameda, Christ,	\$ 10 00
Berkeley, St. Mark's,	73 10
"    "    Junior,	23 50
Coronado, St. Peter's,	38 30
Escondido, Trinity,	15 70
Fresno, St. James',	10 00
"    "    Junior,	40 00
Fresno Flats, St. Agnes' Guild,	35 50
"    Junior,	22 40
"    Sunday School,	1 80
Hayward, Trinity,	30 00
Los Angeles, St. Paul,	333 23
"    Sunday School, Junior,	34 95
"    Ellis Ave. S. S., Junior,	118 39
"    Boyle Heights, Ascension,	1 00
East Los Angeles, Epiphany,	1 00
East Oakland, Advent,	36 10
Oakland, St. Andrew's,	56 20
"    St. John's,	54 15
"    "    Sunday School,	33 60
"    St. Paul's,	610 35
"    "    M. A. G. Junior,	34 50
"    "    Sunday School,	23 85
Oceanside, Grace,	15 70
Pacific Grove, St. Mary's-by-the-Sea,	67 75
Pasadena, All Saints',	131 00
Riverside, "    "	116 60
San Diego, St. Paul's,	1,591 56
"    "    Junior,	58 95
"    St. James',	1 00
San Francisco Associated Parishes,	1,405 47
"    Grace, Ministering Women and Children,	149 95
"    "    St. Agatha,	95 30
"    Mizpah Club,	11 95
"    Old Ladies' Home, St. Anna Society,	2 00
"    St. Paul's, Young Ladies' Guild,	3 00
"    St. Luke's,	1,270 21
"    "    Junior,	36 00
"    "    Sunday School,	13 00
"    St. Stephen's, M. C. L.,	37 00

San Francisco, Trinity Parochial Missionary Society,	\$381 85
"    St. James' Mission, Point Lobos,	3 00
San Mateo, St. Matthew's,	12 50
San Rafael, St. Paul's,	278 20
Santa Barbara, Trinity,	146 00
Santa Cruz, Calvary,	3 75
Sausalito, Christ,	144 00
Stockton, St. John's,	148 00
Ventura, St. Paul's,	17 50
Bakersfield, St. Paul's,	5 00
Centreville, St. James',	5 00
Hanford, Our Saviour,	2 00
National City, St. Matthew's,	1 00
Pomona, St. Paul's,	1 00
Selma, St. Luke's,	5 00
Tulare, St. John's,	3 90
Walnut Creek, St. Paul's,	1 00
Collection, 10th Annual Meeting,	65 10
"    Grace Church Meeting,	36 45
"    General Miss. Meeting, Morning Service,	61 20
"        "        "    Children's Service,	51 70
"        "        "    Evening Service,	69 40
"        "        "    Conference,	23 85
"        "        "    Service at St. Luke's,	28 15
"    Oakland Meeting,	22 00
"    Quiet Day,	34 85
Advertisements—Tenth Annual Report,	18 00
Pledge to Debt St. Luke's Hospital,	6 00
Specials to Diocesan Expenses,	13 23
	<hr/>
	\$8,232 69

## EXPENDITURES.

Boxes to Diocesan Missions and Missionaries,	\$2,426 25
Cash " " " "	1,206 60
Boxes to Domestic " " " "	383 10
Cash " " " "	68 65
"    "    "    and Foreign Board,	39 30
"    "    "    "    Missions,	76 05
Vestments and Church Furnishings,	701 50
Boxes to St. Luke's Hospital,	17 70
Cash " " " "	240 00
"    "    "    Debt,	6 00
"    to Good Samaritan Hospital, San Diego,	62 75





LIST OF BOXES.  
WITH THEIR VALUATIONS,  
SENT TO  
MISSIONARIES AND MISSIONS.

---

Berkeley, St. Mark's—Auxiliary.	VALUE.
To Diocesan Christmas boxes.....	\$ 10 00
Easter box to Diocesan Missionary.....	35 60
Coronado, St. Peter's—Auxiliary.	
Christmas box to Diocesan Missionary.....	38 30
Escondido, Trinity—Auxiliary.	
To Bishop Armitage Orphanage.....	15 00
Fresno, St. James—Junior Auxiliary.	
To Bishop Armitage Orphanage.....	10 00
Fresno Flats, St. Agnes' Guild.	
To Sheltering Arms, San Francisco.....	25 00
Fresno Flats—Mountain Gleaners, Junior Auxiliary.	
To Sheltering Arms.....	5 00
To Maria Kip Orphanage.....	5 00
"          "          "          Charity Pete.....	7 30
Hayward, Trinity—Auxiliary.	
To Diocesan Easter boxes.....	25 00
Los Angeles, St. Paul's—Auxiliary.	
Christmas box to a Diocesan Missionary.....	129 18
Easter box.....	80 90
Fancy work to Bazaar, Santa Clara.....	3 10



## Los Angeles, St. Paul's S. S.—Junior Auxiliary.

Christmas box to S. S., Colton .....	\$11 00
To Maria Kip Orphanage.....	2 25
To City Poor, Los Angeles.....	8 50
To Sunday School at Colton.....	1 00

## Los Angeles, Ellis Avenue S. S.—Junior Auxiliary.

To St. Paul's Hospital, Los Angeles.....	2 00
To Bishop Armitage Orphanage.....	8 35
To Boy's Home, Los Angeles.....	50
To St. Paul's Hospital, Los Angeles.....	10 00
To Sunday School, Fresno Flats.....	40 00
Christmas gift to a child in Bishop Armitage Orphanage.....	1 50
To box to Diocesan Missionary Family.....	6 15
Candy to Sewing School, Los Angeles.....	60
To Mrs. De Bell, Rosebud Agency, South Dakota.....	3 00

## East Oakland, Advent—Auxiliary.

Wood for Altar, Christ Church, Ontario.....	10 00
Easter box to a Diocesan Missionary.....	13 00

## Oakland, St. Andrew's—Auxiliary.

Christmas package to a Diocesan Missionary .....	5 30
Making vestments for a ".....	10 00
Hymnals to Fresno Flats.....	3 75

## Oakland, St. John's—Auxiliary.

To a Clergyman, California.....	3 10
To a Diocesan Missionary.....	22 30
To Diocesan boxes.....	5 00

## Oakland, St. John's S. S.—Junior Auxiliary.

To Bishop Armitage Orphanage.....	1 60
-----------------------------------	------

## Oakland, St. Paul's—Auxiliary.

Books to Fresno Flats Reading Room.....	16 50
To Diocesan boxes.....	26 00
To a Diocesan Missionary.....	53 00
To ".....	25 00

## Oakland, St. Paul's, Mary Abbott Guild—Junior Auxiliary.

Christmas box to a Diocesan Missionary.....	3 50
Easter package to ".....	2 00
" " ".....	3 50
Easter eggs, etc., to S. S. St. Luke's, Jolon.....	2 50
To Diocesan boxes.....	9 00

## Oakland, St. Paul's—Sunday School.

To Rev. W. E. Jacob, Oceanside, for his Sunday Schools....	21 35
--	-------



## Oceanside, Grace Mission—Auxiliary.

Christmas box to a Diocesan Missionary.....	4 30
To a Diocesan Missionary.....	8 00

## Pacific Grove, St. Mary's-by-the-Sea—Auxiliary.

To Diocesan Christmas boxes.....	36 15
To a Diocesan Missionary.....	26 10

## Pasadena, All Saints'—Auxiliary.

To Diocesan boxes.....	15 00
Christmas box to a Clergyman.....	75 00

## Riverside, All Saints'—Auxiliary.

Christmas box to a Diocesan Missionary.....	92 60
Easter .....	22 00

## San Diego, St. Paul's—Auxiliary.

To a Diocesan Missionary.....	76 90
Fancy work to Church Guild, Wauson, Wis.....	8 00
To a Diocesan Missionary.....	26 20
Christmas box to Diocesan Missionary.....	328 71
Altar Linen to St. James' Mission, E. San Diego.....	59 65
Alms Basin to Fallbrook Mission.....	10 00
White Stole to Candidate, Priest's Orders.....	2 00
Black .....	12 00
Black .....	6 00
Red .....	10 00
Cassock to a Diocesan Missionary.....	10 00
Surplice .....	7 00
Chancel Furniture to All Saints', San Luis Rey.....	12 00
Red Chancel Hangings to All Saints', San Luis Rey.....	15 00
Chancel Furniture to Fall Brook Mission.....	12 00
Red Chancel Hangings to Fall Brook Mission.....	15 00
Black Stole to Candidate, Holy Orders.....	6 00
Green and White Stole to Candidate, Holy Orders.....	26 00
Green Stole to Candidate, Priest's Orders.....	12 00
Altar Linen to St. Matthew's, National City.....	6 00
Sunday School supplies to St. John's, Linda Vista.....	6 00
To Rev. W. E. Jacob for his Sunday Schools, Christmas Candy and Cards.....	9 80
To a Christmas box—by St. Mark's, S. San Diego.....	4 80

## San Diego, St. Paul's—Juniors.

To a Diocesan Missionary.....	7 50
To Bishop Armitage Orphanage.....	6 30

## San Francisco—Associated Parishes.

To a Diocesan Missionary.....	11 50
Chalice Veil to City Mission.....	2 00
To a Clergyman.....	15 00
To a Diocesan Missionary.....	5 00
Two Stoles to City Mission, S. F., by St. Peter's Guild.....	20 00



Part of Christmas box to a Diocesan Missionary .....	\$40 00
" " " " " " .....	3 00
" " " " " " .....	15 00
" " " " " " .....	10 00
" " " " " " by St. Peter's Guild .....	8 25
" " " " " " by St. John's Guild .....	10 25
" " " " " " .....	15 00
" " " " " " .....	10 00
To a Clergyman's Wife, by Golden Circle, King's Daughters, Presidio .....	25 00
To Rev. W. E. Jacob's Sunday Schools in San Diego Co., by Faith- ful Circle, King's Daughters, St. Peter's Church .....	10 00
Bible to Mission at Orange .....	15 00
Christmas box to Sunday Schools in Fresno Co. ....	8 85
Cakes, etc., to Thanksgiving Dinner, Fresno Flats .....	11 00
Surplice to St. Stephen's, San Luis Obispo .....	8 00
" St. Michael's, Fowler .....	8 00
" Maria Kip Orphanage .....	8 00
Bible to a Mission .....	25 00
Hardware to Fresno Flats Church Building, by Hawley Bros., S. F. ....	14 05
Part of Easter box to a Diocesan Missionary .....	5 30
" " " " " " .....	30 00
" " " " " " .....	2 00
" " " " " " .....	6 00
" " " " " " .....	8 00
" " " " " " by St. John's Guild ..	3 40
" " " " " " by St. Peter's " ..	5 20
" " " " " " St. Mary's G., Trinity ..	3 50
" " " " " " .....	14 00
" " " " " " .....	8 75
" " " " " " .....	5 00
" " " " " " .....	9 00
To a Mission .....	20 00
Easter Cards to Fresno Flats Sunday School .....	1 50
To Diocesan boxes .....	97 00
To a Diocesan Missionary by St. Katherine's Guild, St. John's Ch. ....	15 00
" " " " Parish Aid Society, " ..	5 95
" " " " " " ..	27 60
Altar Linen to St. Stephen's, Gilroy, by St. Mary's Guild, Trinity, Embroidery on Chancel Hangings, St. Mary's-by-the-Sea, Pacific Grove, by St. Mary's Guild, Trinity .....	8 00
To a Mission Reading Room .....	10 00
To a Diocesan Missionary .....	3 05
" " " " " " .....	20 00
" " " " " " .....	27 45

### San Francisco, Grace—St. Agatha's Guild.

To Maria Kip Orphanage .....	90 30
------------------------------	-------

### San Francisco, Grace—Ministering Women and Children.

To Maria Kip Orphanage .....	47 25
To Bishop Armitage Orphanage .....	49 45
To Old Ladies' Home .....	3 00
To a Diocesan Missionary, Christmas box .....	34 25
" " " " Easter box .....	10 00
" " " " " " .....	6 00



## San Francisco—Mizpah Club.

Christmas box to a Diocesan Missionary.....	\$11 95
---	---------

## San Francisco, Old Ladies' Home—St. Anna Society.

To a Christmas box.....	2 00
-------------------------	------

## San Francisco, St. Paul's—Young Ladies' Guild.

To a Christmas box.....	3 00
-------------------------	------

## San Francisco, St. Luke's—Auxiliary.

To Bishop Armitage Orphanage.....	43 25
To Maria Kip Orphanage.....	70 00
To a Candidate for Orders, Northern California.....	65 25
To a Diocesan Missionary, Clerical Suit.....	23 61
Books to Diocesan Sunday Schools.....	70 00
Christmas-tree ornaments to S. S. Fresno Flats by G. F. Soc.....	15 00
Dolls to a Mission.....	10 00
White Stole to St. Peter's, Coronado.....	12 00
Black Stole to St. Paul's, Ventura.....	6 00
White Stole to St. James', Centreville.....	12 00
Black Stole to Our Saviour, Santa Clara.....	12 00
Surplice to Our Saviour, Santa Clara.....	8 00
Surplice to Orange Mission.....	8 00
Altar Linen to St. James', Monterey.....	20 00
Clerical Suit to a Diocesan Missionary.....	25 00
Six doz. Clerical Collars to Diocesan Missionaries.....	19 50
Cassock to a Mission.....	15 00
Church and Chancel Furniture to St. Mary the Virgin, S. F.....	182 60

## San Francisco, St. Luke's—Junior Auxiliary.

Christmas gifts to Diocesan Missionaries.....	30 00
---	-------

## San Francisco, St. Stephen's—M. C. L.

To a Diocesan Missionary.....	7 00
-------------------------------	------

## San Francisco, Trinity—Parochial Missionary Society.

To a Missionary in Utah, Christmas box.....	137 00
"    "    "    Arkansas, Christmas box.....	18 25
"    "    "    New Mexico, Easter box.....	151 60

## San Rafael, St. Paul's—Auxiliary.

To St. Luke's Hospital, San Francisco.....	15 20
To Bishop Armitage Orphanage.....	15 00
To a Diocesan Missionary, Christmas box.....	93 95
"    "    "    Easter box.....	43 50
Surplice and Altar Linen to Lorin Mission.....	21 00
Altar Linen for use "Diocesan Missionary".....	14 00
To Diocesan Missionaries.....	20 55



## Santa Barbara, Trinity—Auxiliary.

Christmas boxes to Diocesan Missionaries.....	\$50 00
Easter boxes to Diocesan Missionaries.....	50 00
To Diocesan Christmas Boxes.....	25 00
"          Easter boxes.....	5 00

## Sausalito, Christ—Auxiliary.

To a Diocesan Missionary.....	16 50
Making Cassock for a Church Choir.....	5 00
To Sheltering Arms.....	9 00
To Fair at Fresno Flats.....	5 00
Embroidered Altar Linen to St. Michael's, Fowler.....	30 00
Embroidered Altar Linen to Orinda Park Mission.....	30 00
To a Christmas box.....	5 00

## Stockton, St. John's—Auxiliary.

To Fresno Flats Reading Room.....	20 00
Christmas box to a Diocesan Missionary.....	91 00
To Diocesan boxes.....	25 00

## Ventura, St. Paul's—Auxiliary.

To Bishop Armitage Orphanage.....	10 00
To St. Luke's Hospital.....	2 50
Total.....	<u>\$4,148 90</u>

## MONEY CONTRIBUTIONS.

### Alameda, Christ Church—Auxiliary.

To Emergency Fund.....	\$ 5 00
To Widows and Orphans of the Clergy, Diocese of California.....	5 00

### Berkeley, St. Mark's—Auxiliary.

To a Diocesan Missionary.....	12 50
To Auxiliary \$800.....	6 00
To Emergency Fund.....	3 00
To Central Expenses.....	6 00

### Berkeley, St. Mark's—Junior Auxiliary.

To Auxiliary \$800.....	23 50
-------------------------	-------

### Escondido, Trlnity—Auxiliary.

To Emergency Fund.....	70
------------------------	----

### Fresno, St. James'—Auxiliary.

To Auxiliary \$800.....	10 00
-------------------------	-------

### Fresno, St. James'—Junior Auxiliary.

To Support of Beneficiary, Bishop Armitage Orphanage.....	30 00
---	-------

### Fresno Flats—St. Agnes' Guild.

To Emergency Fund.....	6 70
To Central Expenses.....	3 80

### Fresno Flats, Mountain Gleaners—Junior Auxiliary.

To Maria Kip Orphanage.....	5 10
-----------------------------	------

### Fresno Flats—Sunday School.

To Widows and Orphans of the Clergy, Diocese of California.....	1 80
---	------

### Hayward, Trinity—Auxiliary.

To Auxiliary \$800.....	5 00
-------------------------	------



## Los Angeles, St. Paul's—Auxiliary.

To Ascension Mission, Boyle Heights.....	10 00
“ “ “ “ “ .....	5 00
“ “ “ “ “ .....	20 00
To Ascension Mission, Sierra Madre .....	15 00
To Epiphany, E. Los Angeles.....	20 00
To Central Expenses, deficit.....	12 00
To Central Expenses, current year.....	12 00
To Emergency Fund.....	1 05
To Auxiliary \$800.....	25 00

## Los Angeles, St. Paul's S. S.—Junior Auxiliary.

To Maria Kip Orphanage.....	7 50
To Boyle Heights Mission.....	3 70
To Domestic Missions.....	1 00

## Los Angeles, Ellis Ave. S. S.—Junior Auxiliary.

To “Baby Esther Cot,” Bishop Armitage Orphanage.....	30 00
To St. Paul's Hospital, Los Angeles, for Child's Free Cot (Birthday Offerings).....	16 29

## E. Los Angeles, Epiphany—Auxiliary.

To Emergency Fund.....	1 00
------------------------	------

## Los Angeles—Boyle Heights, Ascension.

To Emergency Fund.....	1 00
------------------------	------

## E. Oakland, Church of the Advent.

To Emergency Fund.....	1 10
To Central Expenses.....	12 00

## Oakland, St. Andrew's—Auxiliary.

To a Diocesan Mission .....	6 65
To Auxiliary \$800.....	10 00
To Central Expenses, deficit.....	8 50
To Central Expenses, current year.....	12 00

## Oakland, St. John's—Auxiliary.

To Auxiliary \$800.....	13 75
To a Diocesan Missionary.....	4 00
To Central Expenses.....	6 00

## Oakland, St. John's—Sunday School.

To support of a beneficiary, Bishop Armitage Orphanage .....	30 00
To Auxiliary \$800, by Infant Class.....	2 00







E. San Diego, St. James'—Mission.

To Emergency Fund.....	\$ 1 00
------------------------	---------

### San Francisco—Associated Parishes.

To a Missionary's Son.....	2 50
To an Invalid Clergyman.....	70 48
To Cashier Valley Mission, North Carolina.....	10 00
To Rev. J. A. Emery for family of a Diocesan Missionary.....	8 25
To Bishop Nichols for Building Fund Fresno Flats.....	30 00
To Bishop Hare for his Indian Missions.....	20 10
To a Diocesan Missionary.....	1 00
To Rent of Reading Room, Fresno Flats.....	10 00
To Emergency Fund.....	14 50
To Central Expenses.....	264 94
To Auxiliary \$800.....	284 00
To Purchase a Bell for Walnut Creek Mission.....	10 00
To Purchase Altar for Church, Ontario.....	40 90
To Enrollment Fund.....	5 00

San Francisco, Grace—St. Agatha's Guild.

To purchase Altar for Church, Ontario.....	5 00
--	------

San Francisco, St. Luke's—Auxiliary.

To St. Luke's Hospital, San Francisco.....	240	00
To Old Ladies' Home, San Francisco.....	114	00
Eo Auxiliary \$800.....	80	00
To a Beneficiary, Bishop Armitage Orphanage.....	30	00
"                    Maria Kip Orphanage.....	20	00
To Central Expenses.....	30	00
To Christmas Letter Mission.....	108	00
To Emergency Fund.....	5	00
To Rev. J. A. Emery for family of a Diocesan Missionary.....	6	00
To Missionary Enrollment Fund.....	15	00

San Francisco, St. Luke's—Juniors.

To Bishop Nichols for a Mission, " Bishop's Mite Box "..... 6 00

St. Luke's—Sunday School.

To General Board Foreign and Domestic Missions.....13 00

### Pt. Lobos, St. James' Memorial Mission.

To Auxiliary \$800.....	3 00
-------------------------	------

San Francisco, St. Stephen's—M. C. L.

To Auxiliary \$800.....	10 00
To Bishop Armitage Orphanage.....	5 00
To Mission at King's City, Cal.....	5 00
To Sheltering Arms.....	5 00
To S. S. Jolon, Cal., through Sunday School.....	5 00



San Francisco, Trinity—Parochial Aid Society.	
To a Missionary in Japan.....	75 00
San Mateo—St. Matthew's—Auxiliary.	
To Auxiliary \$800.....	2 50
To Central Expenses.....	2 50
To a Diocesan Mission (by Mrs. Case's Sunday School Class).....	7 50
San Rafael, St. Paul's—Auxiliary.	
To Auxiliary \$800.....	25 00
To Central Expenses.....	24 00
To Hire of Horse, City Missionary.....	6 00
Santa Barbara, Trinity—Auxiliary.	
To Emergency Fund.....	1 00
To Central Expenses.....	15 00
Santa Cruz, Calvary—Auxiliary.	
To a Clergyman's Wife .....	3 75
Sausalito, Christ—Auxiliary.	
To Auxiliary \$800.....	12 00
To Emergency Fund.....	2 00
Christmas Letter Mission.....	1 50
To Sheltering Arms.....	2 50
To Widows and Orphans of Clergy, Diocese of California.....	10 00
To Central Expenses.....	13 00
To a Diocesan Missionary.....	2 50
Stockton, St. John's—Auxiliary.	
To Central Expenses, deficit.....	6 00
Current Year.....	6 00
Ventura, St. Paul's—Auxiliary.	
To Auxiliary \$800.....	5 00
Bakersfield—St. Paul's.	
To Auxiliary \$800.....	5 00
Centreville—St. James'.	
To Auxiliary \$800.....	5 00
Hanford—Our Saviour.	
To Emergency Fund.....	2 00
National City—St. Matthew's.	
To Emergency Fund.....	1 00



## Pomona—St. Paul's.

To Emergency Fund.....	1 00
------------------------	------

## Selma—St. Luke's.

To Auxiliary \$800.....	5 00
-------------------------	------

## Tulare—St. John's.

To Emergency Fund.....	1 40
To Widows and Orphans of Clergy Fund.....	2 50

## Walnut Creek—St. Paul's.

To Emergency Fund.....	1 00
------------------------	------

## Diocesan Branch.

To Central Expenses—Collections at Annual Meeting.....	65 10
"          "          Oakland .....	22 00
"          "          Advertisements 10th Report.....	18 00
"          "          Specials .....	18 23
"          "          of Collections at General Meeting.....	15 00
To Fresno Flats Bldg. Fund of Collections at General Meeting....	110 55
To Expenses General Meeting .....	108 75
To a Clergyman's Wife—Collection at Grace Church Meeting.....	36 45
To Ontario Altar—Collection Quiet Day.....	34 85
To Pledges on Debt St. Luke's Hospital.....	6 00

Total.....	<u>\$4,083 79</u>
------------	-------------------

## SUMMARY.

Total Value of Boxes.....	\$4,148 90
"    Money Contributions.....	<u>4,083 79</u>
Grand Total.....	<u><u>\$8,232 69</u></u>

## Constitution.

---

### I.

The name of this Society shall be the "CALIFORNIA BRANCH OF THE WOMAN'S AUXILIARY TO THE BOARD OF MISSIONS."

### II.

The object of the Society is to diffuse Missionary intelligence ; to increase Missionary activity among the women of the Diocese ; to unite previously existing Societies, and to encourage the formation of new Societies for Missionary work.

### III.

The officers of this Society shall be a President and a First Vice-President ; a Vice-President from every Associated Parish ; a Secretary, and a Treasurer ;—to be chosen at the annual meeting, and approved by the Bishop.

### IV.

The President shall perform such duties as usually pertain to the office. The First Vice-President shall preside in the absence of the President. The Vice-Presidents from the Associated Parishes shall preside in the absence of the President and Vice-President, taking precedence in the order of the numerical representation from their several Parishes ; and they shall make every effort to promote the interests of the Society in their several Parishes.

### V.

The duty of the Secretary is to give notice of the meetings, and to record the proceedings ; to keep a list of the members from



the Associated Parishes ; to prepare an annual report for circulation in the Diocese ; and to conduct the correspondence of the Society with Missionaries, with the Secretary of the Woman's Auxiliary, and with the Secretaries of the various Parish Branches.

#### VI.

The duty of the Treasurer is to keep an account of all moneys received and expended, and of all articles contributed for Missionary purposes, by the Associated Parishes, by Parish Branches, and by individual members.

#### VII.

All Parish Societies who so desire, may become members of this Auxiliary by appointing a Secretary and notifying the President. The Secretaries of Parish Societies are required to correspond with the Diocesan Officers, who alone correspond with the Secretaries of the Board of Missions, and transmit to them all moneys.

#### VIII.

The women of the Associated Parishes in San Francisco and the neighboring towns shall continue to meet together as hitherto, every member paying an annual fee of one dollar.

#### IX.

Two general meetings shall be held every year, the annual meeting during the session of the Diocesan Convention, and another in September, as the President shall appoint.

#### X.

This Constitution may be amended by a two-thirds majority of the members present at a meeting called for the purpose and duly advertised, the proposed amendment having been read at a previous meeting.



## By-Laws.

---

This Society shall provide for the wants of the Missionaries in this Diocese, to the extent of its ability, before offering assistance elsewhere. All Diocesan Missionaries who may need help, and whom the Bishop may recommend, shall receive from the Society one box every year, and no Mission or Missionary shall receive aid from this Society without the consent of the Bishop.

A Work Committee shall be appointed by the President to prepare sewing for the Associated members.

The Society shall meet every Monday during Lent and Advent ; fortnightly at other times, except during the summer vacation. These meetings to be held at the churches of the Associated Parishes in rotation.

Every Associated Parish and Parochial Branch shall make an annual pledge to central expenses, the amount to be voluntary, which, with the collections at the Annual Meeting, shall form a fund out of which shall be paid by the Treasurer all Diocesan expenses.

New Branches in Missions may report as Auxiliary work, such church furnishings and Sunday School supplies as they may provide for their own Missions during the first two years of the Branch's organization.



## Junior Department.

---

*"JESUS called a little child unto Him."*

### PRAYER.

SUFFER me, O Blessed Jesus, to come daily nearer to Thee in Thy Kingdom, the Church. Help me to know and keep my baptismal vows. Make me loving, pure, obedient and truthful. Give me each day something to do for Thee and Thy Church ; who art with the Father and the Holy Ghost, one God, world without end. Amen.

### CONSTITUTION.

This Society is the California Branch of the Junior Auxiliary to the Board of Missions.

Its object is to interest young people in Missions.

To instruct them in Missions.

To systematize and make more efficient their gifts to Missions.

All Sunday schools and other societies of young people now giving to or working for Missions may join the Society without change in local organization, name or work, by signifying intention to work in co-operation with the diocesan officers of the Woman's Auxiliary.

New societies will receive from diocesan or local officers help in perfecting and adapting organization.

Individuals are made members by paying five cents, for which each will receive a membership card, with name and date of entrance, and by promising to use daily the prayer printed thereon.

These cards to be renewed at the expiration of the year, or when lost, at the same price.

Moneys received for them to be sent by local officers to the diocesan treasurer, and applied to the expenses of this department.

This Branch expects of societies in union with it, as its first obligation, a regular giving to the Lenten offering of the General Board.

All work proposed by the W. A. will have the sanction of the Bishops of the Diocese.

All work undertaken by local branches must have the full knowledge and hearty approval of the priest in charge of the parish or Mission.



ST. PHOEBE'S CHURCH  
TRAINING HOME.

136 CHESTNUT STREET, SAN FRANCISCO.

*For the Training of Deaconesses and Parish Workers.  
Under the Right Reverend, the Assistant  
Bishop of California.*

---

Terms to candidates taking the full course, \$300 per annum; to day scholars taking partial course, \$15 per quarter.

Address for particulars,

THE REVEREND JOHN A. EMERY.

Warden.

---

In addition to the scholarship already provided and filled, another is hereby offered which will cover all the expense at the Home for the coming year for board, room, tuition and laundry, not including books or clothing. Applicants should be at least twenty-three years of age, of good health, communicants of the Church, and able to furnish the necessary credentials as to general fitness for entrance upon the two years' course of preparation for the work of a deaconess. Correspondence and inquiries should be addressed to the Warden of the Home, the Rev. John A. Emery, 136 Chestnut Street, San Francisco, who will furnish documents explaining about the Home and the work of a deaconess, as contemplated in the canon. The award will be made after due consideration of the applications.

WILLIAM F. NICHOLS.



## ST. LUKE'S HOSPITAL,

*Valencia St., bet. 27th and 28th Sts.,  
San Francisco,*

Has been thoroughly renovated and remodeled, and is now prepared to take a limited number of patients who may wish large sunny rooms, skillful nursing and the best medical attendance. Prices from \$10 to \$25 per week.

Eight free beds, constantly occupied; more greatly needed. Cost to maintain free bed, \$300 per annum.

J. G. EASTLAND, President Board of Directors.

MRS. JAS. NEWLANDS, Sec. Board of Managers. 2902 Clay St., S. F.

---

## BISHOP ARMITAGE CHURCH ORPHANAGE,

SAN MATEO,

*For Orphaned, Half Orphaned and Destitute  
Boys.*

Pure air, wholesome food, best of care.

The payment of \$2.50 monthly will support beneficiary.

Annual subscription, \$3.00.

Life membership, \$100.00.

L. WADHAM, Secretary, 504 Kearny St., San Francisco.

---

## THE SHELTERING ARMS AND INFIRMARY,

*579 Harrison Street, San Francisco.*

A private Hospital for women and children.

On high ground, and easy of access by the Howard Street Cable Cars.

Terms, \$7 per week and upwards.

For further particulars apply to the Sister in charge.

E. H. MATTNER, M. D.,

*Medical Superintendent.*

J. W. HEERDINK, M. D., }  
J. TOWNSEND, M. D., } *Visiting Physicians.*

TELEPHONE CALL 5273.



# MARIA KIP ORPHANAGE

*For Girls.*

570 HARRISON STREET, SAN FRANCISCO.

Annual Subscription, \$3.00. Life Membership, \$100.00.

All donations in money, clothing, or household articles will be  
thankfully received.

*President,*

MISS C. GWIN, - - - - 1450 Sacramento Street.

*Secretary,*

MRS. THOS. P. WOODWARD, - - 2741 Pine Street.

*Treasurer,*

MRS. GEO. H. BUCKINGHAM, - - 1213 Sutter Street.

---

## TRINITY SCHOOL,

1534 Mission Street, San Francisco.

*A Church Boarding and Day School for  
Young Men and Boys.*

THE REVEREND DR. E. B. SPALDING,

Rector.

# ST. MATTHEW'S HALL,

SAN MATEO, CAL.

*A Church Boarding School for Boys.*

TWENTY-FIFTH YEAR.

THE REVEREND ALFRED LEE BREWER, M. A.,  
Principal.

---

MME. B. ZISKA, A. M.,

1606 California Street, San Francisco,

*receives classes of young ladies and children for preparatory, special, or collegiate course. Modern languages a specialty. Four girls can be accommodated as boarders. A full corps of competent teachers.*

---

## FIELD SEMINARY.

1825 Telegraph Ave., Oakland, Cal.

*An English and French Boarding School for  
Young Ladies.*

STUDENTS PREPARED FOR COLLEGE.

Twentieth Year Will Begin July 29, 1891.

MRS. W. B. HYDE, Principal.

*Ample grounds for outdoor exercise.*



# MISS ADIE'S SCHOOL

FOR YOUNG LADIES AND CHILDREN.

2012 PINE STREET, NEAR LAGUNA.

---

## ST. PAUL'S HOSPITAL

AND

HOME FOR INVALIDS,

*Cor. 16th and Hill Streets,*

LOS ANGELES, CAL.

SISTER MARY, - - - - - *Superintendent.*  
REV. GEO. F. BUGBEE, Rector St. Paul's Ch., ex-officio *President.*

### DIRECTORS.

J. C. Pridham, - - - - - *1st Vice-President.*  
Dr. J. M. Radebaugh, - - - - - *2nd Vice-President.*  
Mr. Wood, - - - - - *Secretary.*  
Mrs. J. M. Elliot, - - - - - *Treasurer.*  
J. T. Towell, Mrs. C. J. Fox, Mrs. B. Chandler, Mrs. F. Rader,  
Mrs. Geo. F. Buckbee, Mrs. Wm. Lacy,  
Mrs. M. S. Severance.

Beatrice Fox, - - - - - *Treasurer Child's Birthday Bed.*

The Hospital now occupies its own house, is out of debt, and ready to enlarge its usefulness. It offers special inducements to the sick in the skilled and devoted management of the Sister in charge, assisted by the board of energetic directors.

Prices, from \$10 per week, upwards.

Patients select their own physicians.

Cost to endow bed, \$5,000.

Cost to support free bed, \$25 per month.

One free bed has been established.

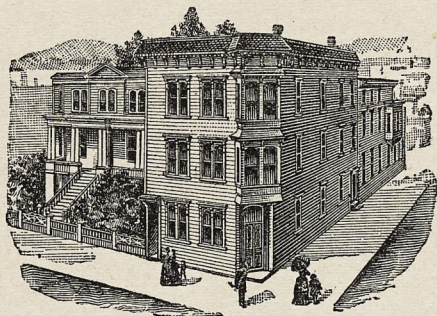


# IRVING INSTITUTE

Select Boarding and Day School

FOR

YOUNG LADIES.



*PREPARES FOR THE UNIVERSITY AND  
EASTERN COLLEGES.*

Fifteenth Year. Eighteen Professors and Teachers. Every  
Home Comfort and Care. Private Assistance to Rapid  
and Thorough Advancement. Full Academic  
Course. Ancient and Modern Languages.  
Vocal and Instrumental Music.  
Drawing and Painting.

BOOK-KEEPING, SHORT-HAND AND TYPE-WRITING.

For Illustrated Catalogue, address the Principal,

REV. EDWARD B. CHURCH, A. M.,  
1036 Valencia St., San Francisco, Cal.



AND

Every  
rapid

TTING

co, Cal

