

Twenty-Second Annual Report of
the California Branch of the
Woman's Auxiliary to the Board
of Missions



Anno Domini, 1902

“Bring them hither to Me.”



The Woman's Auxiliary asks the prayers of the Church on "Altar Day."

"The following may be used by the clergy in the Diocese at the services on the Festival of the Transfiguration.

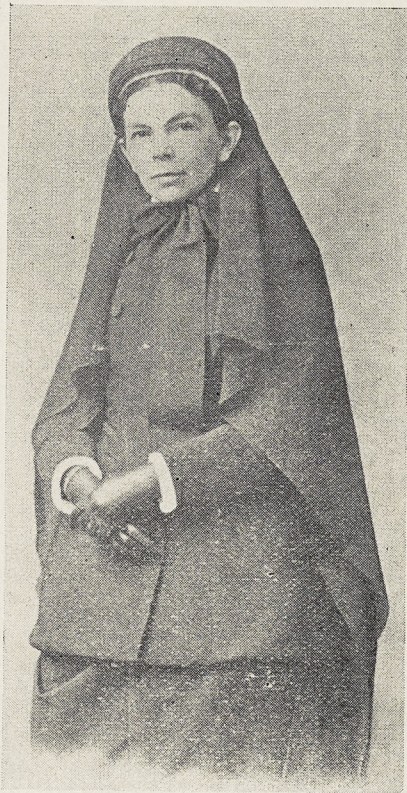
PRAYER FOR THE WOMAN'S AUXILIARY IN THE DIOCESE.

○ ALMIGHTY Father, who didst vouchsafe to Thy chosen ones on the mount, the comforting vision of the glory that shall be revealed, to strengthen and cheer them in their Apostolic work, we beseech Thee to be with Thy servants, the members of the Woman's Auxiliary in this Diocese, in all their efforts for the spread of the kingdom of Thy dear Son. Grant that to many hearts may go the call of opportunity to serve Thee in this work, in the bearing of others' burdens and the fulfillment of the law of Christ. In what they think and do, enable them to hear the voice of Thy Son to guide and strengthen them. And in all the means of Grace in Thy Church, and more especially in the Holy Communion at Thy Altars, help them to see Him who is invisible, that in their aims, and difficulties, and trials they may have the abiding faith that all things are possible to them that believe. We ask this for the merits of Him who came not to be ministered unto, but to minister, Thy Son, our Saviour, Jesus Christ. Amen.

WILLIAM F. NICHOLS.



Church Press 23 Davis St.



THE LATE MARY A. E. TWING.

general society. Having an attack of illness that developed into pneumonia, she was taken from her apartments at the Palace Hotel to St. Luke's Hospital, where she died, having been ill only about six days. She is survived by Miss Julia Emery, with four other sisters, and her brothers, the Ven. Archdeacon Emery, of California, and Rev. W. Stanley Emery, of Tilton, N. H. A woman of rare sweetness and judgment, and with exceeding great love for the Church, her loss may well be deplored.

THE PACIFIC CHURCH

VOL. XXXVII.

JANUARY

Editorials a

THE NEW YEAR.

ANOTHER CHRISTMAS has faded out into the past, with all its gracious memories of days that are dead its joyous renewals of the kindly words and deeds cement and consecrate friendship. To so many it has been a time of unshadowed delight, above all to the children whose special festival it has always seemed to be and if others sat and could not but sit with shadowed hearts among the Christmas lights and the Christmas joy, quietly, vainly and so wearily seeking for the touch of a vanished hand and the least sound of a voice out of the past, yet they realized that the birth of Christ into the world contained within it the future reunion of broken ties of earth—the welding together of the living and those whom we call the dead into a more perfect oneness than earth ever dreamed of. For the incarnate Christ, the Word made flesh, is the center of unity, not only for all that have ever drawn the breath of life—for the quick and the dead—but in Him all time is centred also. We may believe that there never was a time when He was not, that His cognizance of men and things extends over all the generations and is accurate and minute to the last degree. This belief we acquiesce in, but for the most part utterly fail to realize it as a matter of fact, while the larger number, perhaps, never give it even a thought. Yet it is so, and if ever we are disposed to question it, we have to face the crucial difficulty—who can decide it. No living being can

WE BEG TO CALL THE ATTENTION of our readers to the Memorial to Mrs. Twing, a full account of which is given in the Woman's Auxiliary column. Her death, which occurred in San Francisco, whither she came from New York to attend the General Convention, was a source of grief to many. Though far from her home, she was surrounded not only by friends who had been linked with her in her work for thirty years, her Bishop and clergyman being amongst the number, but also by those nearest and dearest to her. She was for many years Secretary to the Woman's Auxiliary after its formation in 1871, and after relinquishing the active work of that position, on her marriage with Dr. Twing, the Domestic Secretary of the Board, in 1882, she was succeeded by her sister, Miss Julia Emery, and became Honorary Secretary. Her missionary labors and interests led her to travel widely, both in this country and abroad, and after her last trip, which was entirely around the world, she wrote her well-known work in which her missionary travels are narrated. Mrs. Twing had come to San Francisco, which place she had visited twice before, in order to be of assistance at the triennial meeting of the Woman's Auxiliary. And she was particularly active in showing and explaining the missionary exhibits which had been supplied through the efforts of the

THE TRUE PASTOR.

ONE of the needs of the age is the office of Pastor. If "we preach not ourselves, but Christ Jesus," we are reminded by St. Paul that we are also to declare ourselves the servants of our people for Jesus' sake. The power of the Christian pulpit can never reach its highest development unless the man who fills it is the pastor of his people. I don't care how busy he is during the week days about other things: how conspicuous he is in all his social movements, how often he appears upon the public platform to present eloquently this or that cause of reform, how many letters he writes to the newspapers or what contributions he makes to literature, he is false to his ordination vows and his ministry is a failure if he does not know and love his people with an affection that can be compared only with the family relationship. Service is the keynote of the Christian ministry. The word minister, which is the noblest title that a Christian priest can bear, we must remember, means to serve. As servants of our people, if we are faithful in our service, as were Christ's Apostles, there comes a time when our service is lost in love, and we are no longer servants but friends. Men and women all over this vast land are hungry for this relationship, which is personal and not official, living and not mechanical. I know the excuses which

Twenty-Second Annual Report
OF THE
California Branch of the Woman's Auxiliary
to the Board of Missions.
May, 1901-May, 1902



Calendar

- Annual service and meeting—In the Spring.
Auxiliary Day—In January, the day after Diocesan Convention.
Monthly Diocesan Meeting—First Monday, San Francisco.
Alameda County Quarterly Meetings—Thursday after the Annual Meeting,
and the second Thursdays in September, November and January.
Altar Day Service—Feast of the Transfiguration.
Quiet Day—San Francisco, in the Spring.
Quiet Day—Alameda County, in the Fall.
Diocesan Missions Class—Director, the Bishop. Conducted by Mrs. E. E.
Osborn at Monthly Meeting, 3:30 P.M. to 4:30 P.M.



All packages, except goods to Altar Department, should be sent to Diocesan House, 731 California St., *addressed to the Woman's Auxiliary.*

OFFICERS

<i>President</i>	
MRS. JAMES NEWLANDS	2902 Clay St., San Francisco
<i>Vice-President, Alameda County</i>	
MRS. RICHARD M. SHERMAN	930 Filbert St., Oakland
<i>Secretary</i>	
Mrs. A. M. LAWVER	1727 Broadway, San Francisco
<i>Recording Secretary</i>	
MISS KATE W. STONEY	69 Fair Oaks St., San Francisco
<i>Treasurer</i>	
MISS JENNIE E. HILL	2219 Ellsworth St., Berkeley
<i>Secretary and Treasurer, Junior Department</i>	
MISS EVELYN H. STOCKER	1230 Jones St., San Francisco
<i>Secretary, Babies' Branch</i>	
MRS. WILLIAM F. NICHOLS	San Mateo
<i>Secretary, Missions Classes</i>	
MRS. E. E. OSBORN	1621 Shattuck Ave, Berkeley
<i>Correspondent, Church Periodical Club</i>	
MRS. GAILLARD STONEY	69 Fair Oaks St., San Francisco
<i>Advisory Committee, San Francisco</i>	
CATHEDRAL MISSION	Miss L. P. Langhorne, 2419 Pacific Avenue
S. LUKE'S	Mrs. George Herbert Kellogg, 2210 Webster St.
S. PAUL'S	Mrs. Amos Welty, 3124 Washington St.
S. PETER'S	Mrs. Elizabeth Henry, 3124 Washington St.
S. STEPHEN'S	Mrs. F. L. Bird, 734 Fourteenth St.
TRINITY	Mrs. William H. Taylor, 2701 California St.
and MISS ELIZABETH S. WADE, Oakmont, Alleghany Co., Pennsylvania	
<i>Secretaries of Parish Branches</i>	
Alameda—Christ Church	Mrs. L. L. Gillogly, 2013 Clement Avenue
Bakersfield—S. Paul's	Mrs. McCray
Berkeley—S. Mark's	Mrs. E. B. Wilson, 2526 Ridge Road
Fowler—S. Michael and All Angels'	Mrs. M. L. Parkhurst
Fresno—S. James'	Mrs. Gertrude Lee, 2415 Merced St.
Gilroy—S. Stephen's	Miss Emily S. Wilson
Hanford—Church of the Saviour	Mrs. F. L. Mynard
Lorin—S. Matthew's Mission	
Martinez—Grace	Mrs. E. L. Bailhache
Modesto—S. Paul's Woman's Auxiliary	Mrs. Keeting
“ “ Girls' Auxiliary	Miss Zena Pervell
Oakdale—St. Matthew's Mission	Miss L. V. Smallwood
Oakland—Church of the Advent	Mrs. Edward Hough
“ S. Andrew's	Miss Wheaton, 1060 Poplar St.
“ S. John's	Miss Ella Sterrett, 154 Lake St.
“ S. Paul's	Miss M. A. Hawley, 522 Knox Place
“ Trinity	Mrs. Vernon Jones, 480 Orchard St.
Palo Alto—All Saints'	Mrs. D. Charles Gardner
Ross—San Anselmo Chapel	Mrs. Edwin L. Griffith

San Francisco—

Cathedral MissionMiss L. P. Langhorne, 2419 Pacific Avenue
 Grace, Ministering Women and Children, Mrs. A. M. Catton, 1417 Taylor St.
 S. Agatha's Guild..... Miss S. E. Johnson 3525 Washington St.
 S. James Memorial Mission..... Mrs. C. H. Anderson, 22 Middle St.
 S. John's.....
 S. Luke's Woman's Auxiliary.....Mrs. Theodore F. Tracy, Belvedere
 Young Woman's Auxiliary, Miss Gertrude A. Burnett, 1922 Broadway
 Altar Society..... Miss M. M. Jones, 1820 Washington St.
 S. Paul's.....Mrs. John Wetmore, 1228 Washington St.
 S. Peter'sMrs. D. O. Kelly, 2214 Jones St.
 S. Stephen's.....Mrs. J. M. Streshly, 2639 Sacramento St.
 Trinity.....Mrs. Edward A. Selfridge, Jr., 1602 Vallejo St.
 S. Felicia's Guild, Mrs. W. A. Deane, 340 23rd Avenue, Richmond Dist.
 S. Mary's GuildMiss Helen G. Barker, 1428 Webster St.
 Trinity GuildMiss Elizabeth Brown, 1019 Bush St.
 Golden Circle, King's Daughter's...Miss S. G. Coleman, 1490 Sacramento St.
 Willing Circle, King's Daughter's.....Mrs. E. L. Breyfogle, Palace Hotel

San Jose—TrinityMiss C. J. Elton, 470 S. Sixth St.

San Mateo—S. Matthew'sMrs. Henry W. Wiegerson

San Rafael—S. Paul'sMrs. Harry Francis

Santa Cruz—CalvaryMrs. C. O. Tillotson

Sausalito—Christ Church.....Mrs. H. C. Campbell

Selma—S. Luke's..... Mrs. Annie Borchers

Sonora—S. James'.....Mrs. C. H. Burden

Stockton—S. John's.....Mrs. W. M. S. Beede, Hale Building

Tuolumne—S. Michael's MissionMrs. Charles Dedrick

Visalia—S. Paul's Mission.....Mrs. B. L. Hughes

Secretaries, Junior Department

Alameda—Christ Church Sunday School.....
Miss A. Louise Gray, S. Charles St., nr. Santa Clara Avenue

Bakersfield—S. Paul's.....Miss Edna Jameson

Corte Madera—Holy Innocents', Working BranchMiss H. Gladys Emery

Fresno—S. James', S. Agnes Guild and S. S.....Miss Susie A. Diamond

Gilroy—S. Stephen's.....Aura Mayock, President

Modesto—S. Paul's.....Miss Gertrude Keeting

Oakdale—S. Matthew's Mission.....Miss Frances Tone

Oakland—S. John's S. S. and Working Branch, Miss Edna Hudson, 970 West St.

S. Paul's Sunday School.....Miss M. A. Hawley, 522 Knox Place

S. Paul's Working BranchRuth Farley

Trinity, Trinity Guild.....Miss Ida Brooks, 75 Valley St.

Pacific Grove—S. Mary's-by-the-Sea, S. S.....Mrs. A. W. Anderson, Supt., Box 162

San Francisco—Cathedral Mission Sunday School

S. James' Memorial Sunday School.....Miss Gussie V. Petrie

S. John's Working Branch.....Mrs. L. C. Sanford, 120 Julian Ave.

S. Luke's Sunday School... Mr. Wm. C. Latham, 2929 Octavia St.

“ Junior Circle..Mrs. F. B. Galindo, 1304 Leavenworth St.

S. Stephen's Sunday School

Trinity Sunday School

The Maria Kip OrphanageMiss Nellie Simon

San Jose—Trinity, Alpha Chapter.....Miss Sayler Van Hagen

Sonora—S. James'Miss Carrie A. Burden

Stockton—S. John's Sunday School, Working Branch.....Miss Alice W. Phillips

Walnut Creek—S. Paul'sMiss A. B. Caldwell

Twenty-Second Annual Meeting

MAY 28, 1902, S. PAUL'S CHURCH, OAKLAND

Again the California Branch has found an "over-the-Bay" annual, delightful and successful. S. Paul's Branch, so active a part of our Auxiliary from its organization, arranged every detail perfectly. We saw many newly interested women, and a happy feeling of welcome pervaded the day. At the morning service the rector, the Rev. Robert Ritchie, celebrated.

The Rev. Geo. E. Swan, who, as informing spirit of the model branch in his parish, S. Mark's, Berkeley, is well fitted to give the key-note to Auxiliary duty, preached on the words of our Saviour to Saul on his way to Damascus, as recorded in the eighteenth verse of the twenty-sixth chapter of the Acts of the Apostles. A very solemn call to realize, amidst our work that deals so largely with externals, the inner meaning of missionary responsibility.

Luncheon with the Ladies of S. Paul's was a delightful opportunity for pleasant reunions.

At 2:00 p.m. Mr. Ritchie opened the meeting with a short service. The President said a word of welcome.

Realizing the impatience to hear the Bishop, just returned from Honolulu, his address on incidents of his visit to Hawaii was given precedence over the usual order, and his Auxiliary's greeting was enthusiastic.

Bishop elect Restarick, coming in unexpectedly, continued the subject of Hawaii, and recalled, among other California incidents, his first meeting with us in the interests of the then new mission at San Diego.

Reports of Secretary and Treasurer were read. Miss Wade in the stress of preparation for her departure presented no formal report of the Missions Class, but reviewed the year's progress on the lines of the Church Missions Publishing Co. Leaflets, and advised continuance of the club method of study. Mrs. Nichols reported for the Babies' Branch. In the enforced absence of Miss Stocker and Mrs. Lincoln, the Secretary read reports of the Junior Department and the Church Periodical Club.

Miss Wade's address on the United Offering was illuminated with the light her bright spirit has shed on all our years together, made more tender by the thought of the parting imminent.

The Rev. J. W. Nichols, by request, told of his hopes of going to China as "Our Own Missionary," and at the close of the meeting pledges to his salary were received. Bishop Rowe, to insure whose presence the Annual had been delayed to the last day in May, brought the story of the Alaska mission down to date, and his dear presence fitly crowned the year's work.

Two features of the day's arrangement deserve special mention:

The afternoon meeting was held in the Sunday School room, where a free expression of feeling was possible.

The ladies of St. Paul's made everything ready the day before, including the luncheon, and thus we had them with us throughout the day.

SUSAN S. LAWVER

Secretary of the Meeting

Twenty-Second Annual Report

Our Twenty-second year opened with bright anticipations of the coming Triennial; but before we could enter fully into the blessed labors of preparation, we had the consecration of a great sorrow that for many of us colored all the events of succeeding months.

On July 8th there passed to the joy and rest of Paradise, Mrs. Heath, for all the years of our Branch—as Vice-President, President, Member of the Advisory Board, our constant guide and friend.

On the Feast of the Transfiguration, we kept Altar Day with an added meaning. In St. Luke's, Mrs. Heath's parish church, many of our older and more distant members came, with others not of the Auxiliary to make with us before the Altar the best memorial of her that love and reverence can offer. The Bishop preached and we print with this extracts from his sermon, which better than any resolutions we could frame, will tell how she is prized and missed.

We loved Mrs. Heath with exceeding love. We trusted her wholly. We relied on her wisdom and took for granted her unbounded charity. Her courage never failed us. Her active interest ceased only with her life. Her intercourse with us was flawless. Our memory of her is a treasury of priceless store.

Two permanent memorials attest our love, in the Church of the Holy Innocents, Corte Madera, building in this new mission at the time of her death: the Auxiliary Altar of 1901, and the Chancel built by her own Auxiliary of St. Luke's Church, San Francisco—the first gift of the kind by one of our parish branches.

A cross carved by a member of St. Luke's Altar Chapter stands as another memorial in the church at Tuolumne, our newest mission.

So far her candle shines to light the Church's way!

And now I bring you a record of fulfillment, of a year filled full of work and life's best experiences.

The Triennial of 1901, in our city of San Francisco is a theme too big for us today. It is "written up" in our hearts and we are learning all the time new ways to profit by its experiences.

But these reports make our continuous history, and the diocesan officers, your representatives, would here render in outline an account of how our share of arrangements was planned and executed. It must be understood that the General Officers direct all Triennial arrangements in outline, leaving the local branch to carry them out in detail, with such added features as hospitality may dictate.

Early last summer the Bishop called Diocesan officers together for conference and appointed the committees we asked for. The General Convention Committee on Finance assumed our running expenses, leaving to the Auxiliary the privilege of providing entertainment.

We are happy to state that we kept within our estimates and returned a nice little sum to the Committee on Finance.

We had four committees: on Information, Public Service and Meetings, Headquarters, and the Missionary Exhibit. Chairmen of these, with an added member as Treasurer, formed the Executive Committee, which acted also as Finance Committee for the Auxiliary. Under these four, sub-committees were formed to carry out details.

The Committee on Information went early to work in correspondence with delegates and visitors desiring board and lodging during their stay, and all through convention days kept the Bureau of Information and the Registry.

Headquarters Committee kept house for the Auxiliary throughout Convention; opened Headquarters formally on the first Saturday with a reception to General

Convention and the Auxiliary, at which representatives from Pacific Coast Branches assisted; and arranged for the afternoon teas which were given by ladies from the several churches.

The Committee on Public Services and Meetings ordered the Triennial Service in Grace Church, the meetings of General officers and the luncheon at the Palace Hotel, and the big Triennial meeting in the Alhambra. They also took charge of the Historic Exhibit at Headquarters.

Many of our Diocesan branches, carrying out Mrs. Twing's suggestion, left with us duplicates of their pictures.

At the close of Convention there being no suitable place in Diocesan House, the chairman of the sub-committee on this Exhibit arranged to have it displayed on the walls of St. Luke's Sunday School Room until the Auxiliary shall have a place of its own, St. Luke's Branch and the Diocesan Branch contributing to the framing of many of the pictures. Grateful to our dear guests for these mementoes of their stay, we invite you to visit our beginnings of a historic exhibit and to add to it what you may have of general and permanent interest.

When, at the time of our California Jubilee, we made an effort to exhibit memorials of our early days, we found little to reward our search. Now is the time to secure such souvenirs before the generation that knows why they have been preserved shall have passed away.

We hope the Triennial Exhibit may have stimulated interest in the history of our diocese and suggest that when mementoes are too dear to part from, a memorandum of them be sent to the Secretary who will be glad to keep a record against history writing.

The Committee on the Missionary Exhibit prepared courts for our Foreign and Domestic Missions, arranged for Missionary addresses and showed the products of our Missions, presiding continuously at the booths in numbers sufficient to exhibit the articles and explain their uses.

As annexes, the Missionary Literature Stall and Girls' Friendly Stall were housed with the Missionary Exhibit.

The Church Periodical Club in its dependent independence on the Auxiliary was our guest and by its presence showed our inseparability.

In the Missionary exhibit alone, nearly 75 women and girls were engaged, the total occupied at Headquarters in various capacities exceeding 150.

We are indebted to the courtesy of the estate of the late Mrs. Clark Crocker for the use of her house as headquarters and to many merchants and private individuals for valuable loans and concessions.

You will be glad that I do not attempt to enter into any of the experiences of Convention; but I am sure the Auxiliary face, as our Bishop expresses it, has new meanings for these Convention days, and as I look at you to-day with memories of Grace Church, the Alhambra, Headquarters shining in your eyes, I call you to remember her who for thirty years had given all her wonderful, good gifts to the service of the Church in the Auxiliary, and who, when Auxiliary joys were at their highest, here laid down her work.

I beg you do not let these memories fade. Cherish them as inspirations and other lives in other lands shall carry on the work which Mrs. Twing, in a not long life, saw crowned by her great desire, a Triennial on the Pacific Coast.

This Branch has held its usual diocesan meetings and Alameda County Quarterlies, with a delightful semi-annual in Convention week, at which the Bishop celebrated and the Rev. E. L. Parsons preached. The afternoon missionary meeting

covering almost all branches of missionary service in the addresses of the Bishop, the Archdeacon, Dr. Clappett, Rev. H. S. Jefferys and Miss Dorsey.

At other stated meetings the lines of auxiliary work have been presented by local speakers, Deaconess Elliott giving us an unexpected address for November.

Diocesan officers held conference before the opening of winter work and before the semi-annual, and on March 18th we were happy to gather at St. Stephen's for a Quiet Day conducted by the Very Rev., the Rector.

On the 23rd of April, in the parlors of the Occidental Hotel, the long-expected meeting with Bishop Brent was realized, when, despite the street-car men strike and a very rainy day—a bad combination—many women and some clergy heard the Bishop of the Philippine Islands on his hopes and plans.

Our thoroughly organized parish branches have stood the strain of the diversions General Convention with its varied interests brings, and have accomplished all we expected of them in this otherwise so busy year. Several branches, as S. Felicia's Guild and the Golden Circle, King's Daughters have suffered changes and removals, but will be on the firing line this year.

A branch has formed in the new mission at Tuolumne.

We have completed box work planned, including the annual Alaska consignment. We have kept up the regular funds. We have rejoiced to find our United Offering of 1901, \$1,496.70 as against the \$624.75 of 1898 and we have had our share in the quick realization of the memorial to Mrs. Twing.

Best of all, in parishes where the clergy stand, not "at the back" only, but at the front of the Auxiliary (we need them all around us), the work, be it great or small, has taken a new vigor, independent undertakings have been carried out successfully without damage to the concerted work, and Diocesan Officers feel that they have something to depend on. Of the rank and file who have stood by so loyally in the work and pleasure of our year, and of those outside the Auxiliary, without whom Triennial would have failed in many ways, we here record grateful appreciation.

But for the Auxiliary there is no halt. The joys and sorrows of the year must make us only stronger for the trials and the tasks to come.

We have girded up our souls for a parting which we determine to see in all the brighter lights of continued interests and hoped for meetings. We give up Miss Wade to her home in the East and welcome Mrs. E. E. Osborn as leader of our Missions Class as lately appointed by the Bishop, on Miss Wade's resignation.

In closing, I will call your attention to an immediate duty—the missionary apportionment of the General Board. Let us remember that whatever else we may be in Diocesan life, we are primarily Auxiliary to the Domestic and Foreign Board, and whether, through the Auxiliary, or the parish to which we belong, for every reason of Church citizenship through the parish and diocese to which we belong, we owe to God's Church our individual share of that apportionment.

We remember Napoleon's theatrical appeal to the witness of the centuries that looked down from the Pyramids on his expectant army. It was stagey but it made men move, it touched a vital spring of conduct.

And if sometimes we lag and grow weary and say "there is so much to do that is old and so much that is new," let us apply this spur to ourselves, and call to mind our noble cloud of witnesses, our dear ones parted who from other dioceses, from Paradise perhaps, may look on in concern.

Remembering the Triennial we must believe that the Auxiliary has it in its power to arouse itself and the whole Church to a fuller sense of obligation to the General Board of Missions, not to-day, perhaps, or tomorrow, but surely. Praying always, always taking comfort in the thought that though the workers die the work lives on.

SUSAN S. LAWVER, *Secretary*

Eighth Annual Report of the Junior Department

On the whole I am able to report progress in our Junior Department, although we find constant discouragements in any attempt to organize our children for week-day study and work. Three working branches have been added, in Holy Innocents', Corte Madera, S. John's, San Francisco, S. Paul's, Oakland; and S. Luke's Branch, San Francisco has reorganized with increased membership. In these and in the Sunday Schools more missionary instruction is given.

The Advent offerings have gone beyond those of any previous year, but only 37 of our 72 Sunday Schools contributed and of the 67 to whom we sent Advent Tents 30 have made no report. In view of this we ask the Sunday School authorities to be careful to send their Advent offerings directly to Mr. Van Bokkelen, indicating clearly that they are the Advent offerings to Diocesan Missions.

Our Children's Lenten Offering is now reported through the Sunday School Auxiliary, but we rejoice to believe that when it is all sent in, it will show an advance in that direction, and we urge our Auxiliary woman generally to promote this cause whenever possible.

The Font Fund is discouragingly small. We have received ten pledges for the coming year and eight to diocesan expense fund.

The Advent Offering and the Font Fund need only to be properly presented to the children for them to respond. The latter should not be taken from the general fund, this does away with its purpose.

Without a single exception in our experience, the children have given over and above the sum asked, 50 cents, whenever an Auxiliary woman has told them all about it.

We beg our clergy and Sunday School superintendents to place before the children the Bishop's annual letter in regard to Advent offerings in time to work up their interest, using when possible some illustration from our diocesan field to quicken their understanding of the object; and to tell the children all about the Font Fund on Sunday before Whitsunday that they may carry out their own wishes concerning it.

EVELYN H. STOCKER, *Secretary and Treasurer*

Eighth Annual Report of the Babies' Branch

The Babies' Branch of the Woman's Auxiliary has just finished its eighth year and during that time has accomplished quite a little when we consider that only little baby hands are stretched out to help.

To give a little idea of what they have done, the California Branch united with other Diocesan Branches in giving a bell for the Indians' Church at Cannon Ball, South Dakota, in memory of Gaylord Hart Mitchell, the very first little helper and founder of the Babies' Branch, they help toward the support of a little Japanese girl in the orphanage at Kyoto, they give to the Bishop's Auxiliary Fund, and to Bishop Rowe, assist in supporting a bed in the Children's Hospital, Raleigh, N. C., and this year give to a Foreign Day School and a Domestic Day School named for Little Helpers, and to a home for convalescent children here in California, a home named in memory of a child once a Little Helper,

There is one thing much desired and that is more Parishes interested in the Babies' Branch and secretaries appointed to take charge of them. It is not a work

that makes a great demand on one's time but it needs in each congregation a person who loves little children and who will try to interest the parents upon whom the responsibility lies to feel that when their Babies are baptized they can be brought to do their share of the Church's work.

The Babies' Branch is a very small part of the Woman's Auxiliary, but after all it is the foundation and upon us rests the responsibility to see that even the very little ones should be taught about missions, and the tiny boys and girls grow up into strong workers for the dear Saviour Who loved little children.

CLARA Q. NICHOLS, *Secretary*

Annual Report of the Church Periodical Club

The Correspondent of the Church Periodical Club respectfully submits the following report :

There are at present 15 Librarians. Number of persons to whom literature is sent, 211. Number of Magazines sent, 8090. Number of Papers sent, 3009. Number of Sunday School Papers sent, 1509. Number of Pictures, 507. Number of Cards, 887. Pieces of Music, 60. Number of Calendars, 61. Number of Bound Books, including Prayer Book and Hymnal, 457.

This is not all we have done, as some Librarians have not reported regularly, but the figures are those which have been sent in. During the General Convention the Church Periodical Club had headquarters in the Woman's Auxiliary Building. Messrs. Sloan & Co. loaned us handsome furniture and rugs, and friends of the Church Periodical Club sent us pictures, lamps and other decorations. Fruit and flowers were also sent almost daily. Here we had open house during the stay of our President and Secretary for the entire time of Convention. Two parlor meetings were held : One at the headquarters, the other at the residence of Mrs. Lyle Fletcher. Both were well attended, also the Church Periodical Club meeting at S. Paul's Church, Oct. 3rd. Each of these meetings was addressed by several Bishops and other clergy. The collection taken at S. Paul's Church was \$27.25, which was sent immediately to the Central Office in New York according to the custom.

The Church Periodical Club of the whole Church also contributed about \$25.00 to the Triennial Offering.

The Librarians with two exception do not report money spent, therefore our financial report is only partial.

Received by Correspondent : Collection at S. Paul's, \$27.25 ; Gifts, \$29.25 ; Dues, \$2.00.

Spent by Correspondent : Central Office, \$27.25 ; Convention Expenses, \$20.00 ; Postage, Expressage, Paper, Twine, etc., \$11.25.

Many Christmas and Easter boxes were also sent out, containing games, toys, and useful articles.

NELLIE O. LINCOLN, *Correspondent*

Report of the Treasurer

In account with the California Branch of the Woman's Auxiliary for the year ending May 1st, 1902.

RECEIPTS	ALTAR FUND	DISBURSEMENTS
Collection, Altar Day to Heath Memorial.....	\$ 40 05	
Thirty-six Churches and Chapels.....	56 30	Remainder due on Altar to Christ Mission, San Jose..
Individuals.....	4 00	Printing Notices, Altar Day.....
From Contingent Fund to Close Account.....	2 89	Memorial Altar to Mrs. Mary Elizabeth Heath.....
Total.....	\$103 24	Total.....
		\$103 24
FONT FUND		
Remainder as per last Report.....	\$ 6 50	
Twelve Sunday Schools and three Working Branches	11 85	
Total.....	\$18 35	In Bank of California.....
		\$18 35
UNITED OFFERING, 1901		
On Deposit in Savings Banks as by last Report.....	\$334 38	
Dividend on Diocesan Branch Deposit.....	5 22	
Thirty-four Branches.....	1135 65	
Diocesan Branch.....	21 45	
Total.....	\$1496 70	To Mr. Geo. C. Thomas, Treasurer, Domestic and
		Foreign Board
		\$1496 70
UNITED OFFERING, 1904		
Through Diocesan Branch.....	\$5 00	
Babies' Branch.....	1 25	
Total.....	\$6 25	On Deposit, San Francisco Savings Union
		\$6 25
ADVENT OFFERING, JUNIOR DEPARTMENT		
		Paid by Treasurer, Diocese, for Mite Boxes & Postage
		Paid by Treasurer, Diocese, to Diocesan B'd of Mis'ns
		Paid by Treasurer, Diocese, to B'p's Auxiliary Fund..
Sent direct to Treasurer of Diocese from Thirty-seven		
Sunday Schools.....	\$390 56	Total.....
		\$390 56

BISHOP'S AUXILIARY FUND

Pledges and Envelopes.....	\$244 36
Collections: Diocesan Branch.....	49 70
Babies' Branch.....	25 00
Specials to Deaconess' Salary	
Remainder last Year's Receipts.....	4 25
Pledges	108 00
Transferred from Advent Offering.....	165 76
Transferred from Contingent Fund.....	8 43
Total.....	\$605 50

Paid Sister Mary May, 1901-May, 1902	300 00
Paid Miss Dorsey, Deaconess, May, 1901-May, 1902..	300 00
Printing Notices	5 50

Total.....\$605 50

ALASKA MISSIONS

Branches for Purchases and Freight.....	\$ 71 32
A Member to Salary, Isaac.....	10 00
Total.....	\$ 81 32

Paid, Mr. Geo. C. Thomas, Treasurer, Salary, Isaac...\$	10 00
Purchases to complete Boxes.....	71 32

Total.....\$81 32

(Freight Charges otherwise provided for)

MISCELLANEOUS

Diocesan Collections for Altar Department.....	\$ 10 95
" " " Chairs, Japanese Miss'n, S. F.	11 75
" " " Framing Historical Exhibit..	4 25
" " " Church Missions Pub. Co....	5 00
" " " Bishop Brent.....	25 50
" " " Mission, Stoneville, N. C.....	5 00
" " " Altar Cloth, Chaplain, U. S. A.	4 30
For Christmas and Easter Boxes	300 12
For Japanese Mission, S. F., by a member	5 00
To purchase Communion Sets.....	25 65
For Domestic and Foreign Board.....	20 50
For Mrs. Twing's Memorial	98 15
For Elizabeth Bunn Memor'l Hos., Wuchang, China..	14 60
Total.....	\$530 77

Materials, Altar Department	\$ 10 90
Rev. J. D. Yoshimura for chairs	11 75
Framing Historical Exhibit.....	4 25
Miss Mary Beach, Church Missions Publishing Co....	5 00
Bishop Brent.....	25 50
Mrs. N. T. Smith for Mission, Stoneville, N. C.....	5 00
Altar Department for Materials, Altar Cloth for Chaplain, U. S. A.....	4 30
Purchases, Christmas and Easter Boxes.....	300 12
Japanese Mission, San Francisco	5 00
International Silver Co., Communion Sets	25 65
To Mr. G. C. Thomas, Treas. for Dom. and For. B'd..	20 50
To Mr. G. C. Thomas, Treas. for Wuchang Hospital..	8 42
Freight and Cartage on Box to Wuchang, Hospital ...	6 18
To Mr. Geo. C. Thomas, Twing Memorial	98 15

Total.....\$530 77

CONTINGENT FUND

Remainder at close of last year.....	\$ 21 79
111 Memberships, Diocesan Branch	111 00
Total.....	<u>\$132 79</u>

Purchases for Diocesan Missionary.....	\$ 17 00
Materials for Altar Linen and Vestments	16 30
Transferred to Altar Fund	2 89
Transferred to Diocesan Expense Account	39 07
Transferred to Bishop's Auxiliary Fund	8 43
On deposit, Bank of California	49 10
Total.....	<u>\$132 79</u>

DIOCESAN EXPENSES

Remainder as by last year's Report.....	\$ 30 60
Paid later on last year's Pledges.....	6 00
Pledges.....	354 25
Specials	70 00
Collections, Diocesan Meetings	53 46
Advertisements, 21st Annual Report.....	37 50
Collections, Secretary's Visits.....	7 00
Junior Branches.....	2 00
Babies' Branch for Babies' Branch Expenses.....	7 62
From Contingent Fund to close account.....	39 07
Total.....	<u>\$607 50</u>

Secretary, Salary, May, 1901-May, 1902	\$480 00
Printing 21st Annual Report.....	47 20
Stationery	15 45
Telegrams	3 75
Express	2 75
Printing Notices	5 25
Postage.....	35 18
Travelling Expenses	7 80
Expenses, Annual and Semi-Annual Meetings	2 50
Expenses, Babies' Branch.....	7 62
Total.....	<u>\$607 50</u>

SUMMARY

		Remainders, last year	
		Font Fund.....	\$ 6 50
		United Offering, 1901.....	334 38
		Bishop's Auxiliary Fund.....	4 25
		Contingent Fund.....	21 79
		Diocesan Expenses.....	36 60 \$ 403 52
		Transfers	217 15
		Deposited, San Francisco Savings Union.....	6 25
		Disbursed.....	3,286 11
		Cash in Bank of California.....	59 95
		(Also Font Fund Remainder \$6 50)	
		Total.....	\$3,972 98
Totals.....	\$3,972 98		
Cash accounted for as above.....	\$3,972 98		
Less Transfers and Remainders.....	620 67	\$3,352 31	
Additional reported sent direct by Branches and not through			
Treasurer		889 89	
Total Cash Contributions, May, 1900-May, 1901.....		\$4,242 20	

JENNIE E. HILL, *Treasurer*

List of Boxes and Money Contributions

WOMAN'S AUXILIARY				TOTALS	SUM TOTALS
Alameda, Christ Church					
Box to Diocesan Missionary	-	-	-	\$ 7 25	
Maria Kip Orphanage	-	-	-	7 30	
Sewing to Maria Kip Orphanage	-	-	-	6 00	
Box to Christ Mission, Anvik, Alaska	-			15 00	35 55
By S. Agnes' Guild					
Box to Church Home for Boys	-	-	-	50 00	
Cathedral Mission	-	-	-	12 00	62 00
Cash to United Offering, 1901	-	-	-	12 03	
Clerical Suit, Diocesan Missionary				2 00	
Bishop's Auxiliary Fund	-	-		8 85	
Diocesan Expenses	-	-	-	16 25	
Altar Fund, 1901	-	-	-	1 00	
Membership, Diocesan Branch	-	-		1 00	
Freight on Alaska Goods	-	-	-	1 00	42 13 139 68
Berkeley, S. Mark's					
Bible to Diocesan Mission	-	-	-	20 00	
Box to Cathedral Mission	-	-	-	10 00	
S. Dorothy's Rest	-	-	-	6 00	
Inmate, Old Ladies' Home	-	-		8 50	
Anvik Mission, Alaska	-	-	-	13 50	
Miss Taylor, Pyramid Lake, Nev.	-			95	
Communion Set and Altar Linen to Sisson Mission, Sacramento	-	-	-	25 00	
Prayer and Hymnal Bags to Japanese Mission, San Francisco	-	-	-	4 50	88 45
Cash to United Offering, 1901	-	-	-	69 45	
Bishop's Auxiliary Fund	-	-	-	15 05	
Easter Missionary Box	-	-	-	5 00	
Diocesan Expenses	-	-	-	15 00	
Alaska Purchases and Freight	-	-		10 00	
Treas., Gen. Board of Missions, domestic				10 00	
Treas., Gen. Board of Missions, foreign				8 00	
A Foreign Missionary	-	-	-	15 00	
Twing Memorial, S. Mary's, Shanghai				15 00	
Altar Fund, 1901	-	-	-	1 10	163 60 252 05
Fowler, S. Michael's					
Box to Maria Kip Orphanage	-	-	-	8 00	
Old Ladies' Home	-	-	-	7 36	
A Diocesan Missionary	-	-	-	13 60	
Cotta to a Diocesan Missionary	-	-	-	7 00	35 96
Cash to Twing Memorial	-	-	-	5 00	
Diocesan Expenses	-	-	-	3 00	
Altar Fund, 1901	-	-	-	1 00	
United Offering, 1901	-	-	-	5 00	14 00 49 96

Hanford, Church of the Saviour

Box to Christ Mission, Anvik, Alaska	-	12 00		
Old Ladies' Home	- - -	12 00	24 00	
Cash to United Offering, 1901	- - -	2 51		
Alaska Purchases	- - -	1 50	4 01	28 01

Gilroy, S. Stephen's

Quilt to Church Home for Boys	- - -	3 00	3 00	
Cash to Altar Fund, 1901	- - -	1 00	1 00	4 00

Lorin, S. Matthew's Mission

Quilt to Anvik, Alaska, by a member	- - -	3 00	3 00	
Cash to Altar Fund, 1901	- - -	1 00		
United Offering, 1901	- - -	3 15		
Christmas Boxes	- - -	1 00	5 15	8 15

Menlo Park

Box to a Diocesan Missionary	- - -	79 90	79 90	79 90
------------------------------	-------	-------	-------	-------

Oakdale, S. Matthew's Mission

Quilts to Wuchang Hospital, Shanghai	- - -	6 00		
Quilt to Diocesan Missionary	- - -	3 00	9 00	9 00

Oakland, Church of the Advent

Cash to United Offering, 1901	- - -	25 00		
Bishop's Auxiliary Fund	- - -	5 00		
Altar Fund, 1901	- - -	1 00		
Easter Box Purchases	- - -	2 50	33 50	33 50

Oakland, S. Andrew's

Cash to United Offering, 1901	- - -	1 50		
Bishop's Auxiliary Fund	- - -	6 50		
Altar Fund, 1901	- - -	1 00		
Alaska Purchases and Freight	- - -	2 50		
Membership, Diocesan Branch	- - -	1 00	12 50	12 50

Oakland, S. John's

Box to Christ Mission, Anvik, Alaska	- - -	35 00	35 00	
Cash to United Offering, 1901	- - -	8 09		
Clerical Suit	- - -	5 00		
Diocesan Expenses	- - -	6 00		
Alaska Freight	- - -	1 00		
Altar Fund, 1901	- - -	1 00	21 09	
By Altar Guild				
Cash to Altar Fund, 1901	- - -	1 00	1 00	57 09

Oakland, S. Paul's

Box to Christ Mission, Anvik, Alaska	- - -	55 00		
Armitage Orphanage	- - -	5 50		
Maria Kip Orphanage	- - -	8 50		
Box for General Distribution	- - -	10 00	79 00	

Cash to United Offering, 1901	-	-	-	146 92		
Twing Memorial	-	-	-	2 00		
Clerical Suits	-	-	-	38 25		
Bishop's Auxiliary Fund	-	-	-	13 40		
Diocesan Expenses	-	-	-	60 00		
Mission of the Good Samaritan, Oakland				30 00		
Altar Fund, 1901	-	-	-	1 00		
Alaska Freight	-	-	-	2 00	293 57	372 57
Oakland, Trinity—Sisters of Bethany and S. Agnes' Guild						
Box to Skagway Hospital, Alaska	-	-	-	9 00		
Christ Mission, Anvik, Alaska	-	-	-	13 50	22 50	
Cash to United Offering, 1901	-	-	-	5 00		
Christmas Missionary Box	-	-	-	5 00		
Easter Boxes	-	-	-	5 00		
Diocesan Expenses	-	-	-	12 00		
Purchases and Freight, Alaska	-	-	-	2 75	29 75	52 25
Pacific Grove, S. Mary's-by-the-Sea						
Cash to Altar Fund, 1901	-	-	-	2 00	2 00	2 00
Ross, San Anselmo Chapel						
Box to Diocesan Mission	-	-	-	5 00	5 00	
Cash to Christmas Box Purchases	-	-	-	5 00	5 00	10 00
San Francisco, Cathedral Mission of the Good Samaritan						
Cash to United Offering, 1901	-	-	-	15 00		
Twing Memorial	-	-	-	5 00		
Alaska Purchases and Freight	-	-	-	5 00		
Japanese Mission, San Francisco	-	-	-	5 00		
Diocesan Expenses	-	-	-	12 00		
Altar Fund, 1901	-	-	-	1 00		
Memberships in Diocesan Branch	-	-	-	12 00	55 00	55 00
San Francisco, Grace						
Cash to United Offering, 1901	-	-	-	48 15		
Memberships, Diocesan Branch	-	-	-	6 00	54 15	54 15
By Ministering Women and Children						
Box to Maria Kip Orphanage	-	-	-	7 25		
Armitage Orphanage	-	-	-	12 00		
Christ Mission, Alaska	-	-	-	3 00	22 25	
Cash to Altar Fund, 1901	-	-	-	1 00	1 00	23 25
San Francisco, S. James' Memorial Mission						
Making Surplices for a Diocesan Missionary				4 00		
Making Cassock for a Diocesan Missionary	-	-	-	7 00		
Making Altar Linen for Altar Department				6 50		
Box to Cathedral Mission, San Francisco	-	-	-	9 10		
Prayer Books and Hymnals to Diocesan Mission through Miss Dorsey	-	-	-	8 55		
Package to Alaska Box	-	-	-	75		
Font to S. Michael's Mission, Tuolumne				5 00	40 90	

Cash to Altar Fund, 1901	-	-	-	1 00		
Quarterly Collection, Diocesan B'd of Missions	-	-	-	8 17		
Alaska Purchases	-	-	-	7 50		
United Offering, 1901	-	-	-	6 00	22 67	63 57
San Francisco, S. John's						
Box to Christ Mission, Anvik, Alaska	-	-	-	5 00	5 00	
Cash to Bishop's Auxiliary Fund	-	-	-	5 05		
Christmas Candy for Diocesan Mission	-	-	-	2 50		
Twing Memorial	-	-	-	2 00		
Altar Fund, 1901	-	-	-	1 00		
Alaska Purchases and Freight	-	-	-	2 00		
Memberships in Diocesan Branch	-	-	-	7 00		
United Offering, 1901	-	-	-	15 50	35 05	40 05
S. John's Parish Aid Society						
Box to Armitage Orphanage	-	-	-	20 00	20 00	20 00
San Francisco, S. Luke's						
Woman's Auxiliary						
Box to Maria Kip Orphanage	-	-	-	3 60		
Old Ladies' Home	-	-	-	4 00		
Christ Mission, Anvik, Alaska	-	-	-	25 00	32 60	
Cash to build Chancel in Holy Innocents' Mission, Corte Madera, a memorial to Mrs. Mary Elizabeth Heath	-	-	-	300 00		
United Offering, 1901	-	-	-	234 08		
Bishop's Auxiliary Fund	-	-	-	61 75		
Christmas Box Purchases	-	-	-	35 00		
Easter Box	-	-	-	25 00		
Framing Pictures of Permanent Missionary Exhibit	-	-	-	12 00		
Diocesan Expenses	-	-	-	60 00		
Diocesan Expenses, a special	-	-	-	70 00		
Twing Memorial	-	-	-	10 50		
Memberships, Diocesan Branch	-	-	-	31 00		
Alaska Purchases and Freight, by members	-	-	-	8 50	847 83	880 43
Young Woman's Auxiliary						
Christmas Cards and Candy to Miss Dorsey for her Missions	-	-	-	20 00	20 00	
300 Articles, Clothing to Clothing Bureau, not valued	-	-	-			
Cash to United Offering, 1901	-	-	-	8 52		
Bishop's Auxiliary Fund	-	-	-	12 00		
Diocesan Expenses	-	-	-	12 00		
Church Periodical Club	-	-	-	4 00		
Altar Fund, 1901	-	-	-	1 00	37 52	57 52
Altar Society						
Wood Altar Cross to S. Michael's, Tuolumne, carved by a member	-	-	-	25 00		
Altar Linen to Altar Department	-	-	-	15 00	40 00	
Cash to Altar Fund, 1901	-	-	-	1 00	1 00	41 00

San Francisco, S. Paul's

Box to a Diocesan Missionary	-	-	24 05		
Christ Mission, Anvik, Alaska	-	-	57 00	81 05	
Cash to United Offering, 1901	-	-	61 91		
Twing Memorial	-	-	15 00		
Alaska Purchases and Freight	-	-	3 00		
Diocesan Expenses	-	-	12 00		
Bishop's Auxiliary Fund	-	-	27 86		
Altar Fund, 1901	-	-	1 00		
Memberships, Diocesan Branch	-	-	8 00	128 77	209 82

By Ladies' Aid Society

Cash to Bishop of Alaska	-	-	25 00	25 00	25 00
--------------------------	---	---	-------	-------	-------

San Francisco, S. Peter's

Cotta to Diocesan Missionary	-	-	7 00	7 00	
Cash to United Offering, 1901	-	-	30 00		
Twing Memorial	-	-	6 00		
Japanese Mission, San Francisco	-	-	5 00		
Bishop's Auxiliary Fund	-	-	8 50		
Diocesan Expenses	-	-	7 00		
Altar Fund, 1901	-	-	1 00		
Memberships, Diocesan Branch	-	-	2 00		
Alaska Purchases and Freight	-	-	1 00	60 50	67 50

San Francisco, S. Stephen's

Box to Armitage Orphanage (by Mrs. Bird's Guild)	11 50	11 50		
Cash to Christmas Box Purchases	-	-	10 00	
Easter Box Purchases	-	-	7 00	
Bishop's Auxiliary Fund	-	-	8 00	
Altar Fund by a member	-	-	1 00	
Altar Fund by S. Margaret's Guild	-	-	1 00	
Diocesan Expenses	-	-	30 00	
United Offering, 1901	-	-	50 48	
Purchases, Box to Ch. Mis'n, Anvik, Alaska	4 00			
Twing Memorial	-	-	6 00	
Memberships in Diocesan Branch	10 00	127 48	138 98	

San Francisco, Trinity—Woman's Auxiliary

Box to a Diocesan Missionary	-	-	48 25		
a Diocesan Missionary	-	-	58 75		
Alaska Missionary	-	-	3 00	110 00	
Cash to United Offering, 1901	-	-	105 35		
Twing Memorial	-	-	12 20		
Bishop of Alaska	-	-	310 00		
National Cathedral, Washington, D. C.	40 00				
Bishop's Auxiliary Fund, pledges	24 00				
“ “ “ by members	11 30				
“ “ “ for Miss Dor-					
sey's Salary	-	-	60 00		
Diocesan Expenses	-	-	48 00		
Memberships in Diocesan Branch	-	-	33 00	643 85	753 85

S. Mary's Guild

Box to S. John's Mission, Globe, Arizona	-	4 00		
Embroidered Red Silk Stole to Missionary in Ariz.		10 00		
Embroidered Purple Silk Stole to Cathedral Mis'n				
San Francisco	-	10 00		
Green Silk Burse to S. James', Fresno	-	2 50		
Embroidery and Linings of White Silk Stole to				
Altar Department	-	15 00	41 50	
Cash to Altar Fund, 1901	-	5 00		
Diocesan Expenses	-	12 00	17 00	58 50

Trinity Guild

Box to Church Home for Boys	-	25 00		
Widow of Domestic Missionary	-	78 00		
Maria Kip Orphanage	-	20 00	123 00	123 00

San Francisco, Golden Circle, King's Daughters

Communion Set to S. Michael's Mission, Tuolumne		10 00	10 00	10 00
---	--	-------	-------	-------

San Francisco, Willing Circle, King's Daughters

Altar Linen to Christ Church, San Jose	-	25 00		
Altar Linen to S. Michael's, Tuolumne	-	25 00	50 00	
Cash to Altar Fund, 1901	-	1 00		
Bishop's Auxiliary Fund, Miss Dorsey's				
Salary	-	24 00	25 00	75 00

San Jose, Trinity

Box to Christ Mission, Anvik, Alaska	-	46 00	46 00	
Cash to Bishop's Auxiliary Fund	-	15 00		
Building Fund, S. James' Mission, Lindsay		5 00		
Diocesan Expenses	-	6 00		
Purchases and Freight, Alaska Box	-	3 30		
Altar Fund, 1901-1902	-	2 00		
United Offering, 1901	-	20 00	51 30	97 30

San Mateo, S. Matthew's

Cash to United Offering, 1901	-	33 69		
Bishop's Auxiliary Fund, Miss Dorsey's				
Salary	-	24 00		
Christmas Boxes	-	10 00		
Diocesan Expenses	-	10 00		
Building Fund, S. Michael's, Tuolumne		50 00	127 69	127 69

San Rafael, S. Paul's

Box to Church Home for Boys	-	6 75		
Surplice to a Diocesan Missionary	-	15 00		
Materials for White Stole to Altar Department		4 00		
Box for Distribution in Diocese	-	3 50	29 25	
Cash to Christmas Boxes	-	12 00		
Easter Boxes	-	8 00		
Diocesan Expenses	-	18 00		
Altar Fund, 1901 and 1902	-	2 00	40 00	69 25

Santa Cruz, Calvary

Box to Maria Kip Orphanage - - -	10 00	10 00	
Cash to Altar Fund, 1901 - - -	1 00		
United Offering, 1901 - - -	3 50		
United Offering, 1901, by S. Agnes' Guild	2 30	6 80	16 80

Sausalito, Christ Church

Vestments to Altar Department for distribution	8 00		
Communion Set to Chaplain, U. S. A. -	7 50	15 50	
Cash to United Offering, 1901 - -	28 50		
Treas., Board of Missions, Bishop Rowe	16 00		
Treas., Board of Missions, general	2 50		
Twing Memorial - - -	2 50		
Diocesan Expenses - - -	10 00		
Bishop's Auxiliary Fund - - -	2 50		
Easter Boxes - - -	2 50		
Altar Fund, 1901 - - -	1 00	65 50	81 00

Selma, S. Luke's

Box to Diocesan Officers to distribute -	8 00		
Quilt to Diocesan Missionary - - -	5 00	13 00	
Cash to Altar Fund, 1901 - - -	1 00	1 00	14 00

Sonora, S. James'

Cash to United Offering, 1901 - -	5 00	5 00	5 00
-----------------------------------	------	------	------

Stockton, S. John's

Box to Diocesan Missionary - - -	14 50	14 50	
Cash to Diocesan Missionary - - -	5 00		
United Offering, 1901 - - -	46 60		
Christmas Boxes - - -	15 00		
Bishop's Auxiliary Fund - - -	9 45		
Diocesan Expenses - - -	5 00		
Altar Fund, 1901 - - -	1 00	82 05	96 55

Tuolumne, S. Michael's Mission

Altar Cloth for Mission - - -	6 20	6 20	
Cash to Organ Purchase for Mission -	90 00	90 00	96 20

Visalia, S. Paul's Mission

Cash to United Offering, 1901 - - -	2 07	2 07	2 07
-------------------------------------	------	------	------

Walnut Creek, S. Paul's Mission

Cash to United Offering, 1901 - - -	13 85	13 85	13 85
-------------------------------------	-------	-------	-------

Diocesan Branch

Box to Christ Mission, Anvik, Alaska -	31 00		
Christ Mission, Anvik, through S. M.	20 00		
Christ Mission, Anvik, by a member in Mountain View - -	10 00		
Diocesan Missions and Institutions -	50 00		

Through Altar Department

Embroidery and making White Altar Cloth for San Ardo Mission - -	20 00	
Violet Stole to Paso Robles Mission -	8 00	
White Stole to a Diocesan Missionary -	8 00	
Fair Linen Cloth to Point Richmond Mission by a member - - -	12 00	
Altar Linen to Grangeville Mission, Spokane	15 00	
Work and part of Materials used, Altar Linen to Diocesan Missions - -	40 50	214 50
Cash to United Offering, 1901		
Holy Innocents', Corte Madera -	1 50	
S. Paul's, Modesto - -	12 00	
Mrs. D. - - - -	12 25	
Mrs. McG. - - - -	6 20	
Mrs. M. - - - -	1 00	
"Los Angeles" - - - -	1 00	
E. Aurora, New York - - -	1 00	
Dividend - - - -	5 22	
A member in Church of the Advent, S. F.	20 00	
United Offering, 1904—a Thankoffering -	5 00	
Twing Memorial		
Two Sisters - - - -	5 00	
Auxiliary, Honolulu - - -	5 00	
Holy Innocents', Corte Madera -	2 60	
Collection at Diocesan Meeting	4 25	
Salary of Isaac, Alaska - - -	10 00	
Purchases, Alaska Box - - -	3 00	
Alaska Purchases, Mrs. N. - - -	5 00	
S. M. to Alaska Freight - - -	1 50	
Freight on Box to Wuchang Hospital	9 25	
Sent Miss Emery for Wuchang Hospital	6 35	
purchase Chairs, Japanese Mission, S. F.	11 75	
purchase Communion Set, Grangeville, Mission Spokane - - -	5 15	
Framing Historical Exhibit -	4 25	
Church Missions Publishing Co. -	5 00	
Mission, Stoneville, North Carolina	5 00	
Bishop of the Philippine Islands -	25 50	
Bishop's Auxiliary Fund, Collections	49 70	
Miss W.	9 00	
Envel's on plate	75	
a member	50	
Altar Department, Collections -	10 95	
Cathedral Mission for Vestments	5 50	
Towards Vestments for Chaplain, U. S. A.	4 30	
Altar Fund, 1901		
Col't'n, Altar Day Service, F't of the Transfig'n	40 00	
Col't'n, S. Luke's Hospital, first service in Chap.	1 00	
Col't'n, Consecration Heath Memorial Altar, Holy Innocents', Corte Madera	4 60	

Friends of Mrs. Heath - - - -	3 00		
Miss W. - - - -	1 00		
Corte Madera, Holy Innocents, 1901 -	1 00		
Livermore, Grace Mission, 1901 - -	1 00		
Los Gatos, S. Luke's, 1901 - - -	1 00		
Palo Alto, All Saints', 1901 - .	1 00		
Patchin, Christ Church, Mr. and Mrs. W., 1901	2 00		
Redwood City, S. Peter's, 1901 - -	1 00		
San Jose, Christ Mission, 1901 - - -	1 00		
San Mateo, S. Matthew's School, 1901 -	1 00		
San Mateo, Church Divinity School, 1900 & 1901	2 00		
Diocesan Expenses - - -	97 96	413 08	627 58

JUNIOR DEPARTMENT

Alameda, Christ Church Sunday School

Box to Mission, Canyon City, Oregon -	18 15		
Miss Dorsey for her work -	4 10	22 25	
Cash to Bishop Wells - - - -	6 27		
Gray - - - -	23 19		
Rowe - - - -	31 52		
Gray - - - -	28 50		
Advent Offering - - - -	25 35		
Font Fund, 1901 - - - -	1 00		
Department Expenses - - -	1 00	116 83	139 08

Berkeley, S. Mark's

Cash to Purchases, Alaska Box - -	5 52		
Advent Offering - - - -	11 25		
Font Fund, 1901 - - - -	1 00	17 77	17 77

Corte Madera, Holy Innocents

Box to Christ Mission, Anvik, Alaska -	4 00	4 00	4 00
--	------	------	------

Gilroy, S. Stephen's

Two Quilts to Church Home for Boys -	4 00	4 00	4 00
--------------------------------------	------	------	------

Lorin, S. Matthew's Sunday School

Cash to Advent Offering - - - -	3 38		
Font Fund, 1901 - - - -	50	3 88	3 88

Monterey, S. James' Sunday School

Cash to Font Fund, 1901 - - - -	50	50	50
---------------------------------	----	----	----

Oakland, S. John's Sunday School

Cash to Advent Offering - - - -	11 03		
Font Fund, 1901 - - - -	1 00	12 03	12 03

Oakland, S. Paul's Sunday School—Working Branch

Christmas Toys to Good Samaritan Mission, Oak.	25 00		
Two Quilts to Christ Mission Anvik, Alaska	3 00		
Baby Clothes to S. Dorothy's Rest -	3 95		
570 Patchwork pieces to Miss Taylor, Pyramid Lake, S. Mary's Mission, Nevada, not valued.		31 95	

Cash to Wuchang Hospital	-	-	-	2 07		
Good Samaritan Mission, Oakland				4 94		
Font Fund, 1901	-	-	-	1 00		
Advent Offering	-	-	-	27 41	35 42	67 37
Oakland, Trinity—Trinity Guild						
Box to Bishop Rowe Hospital, Skagway	-			7 50		
Maria Kip Orphanage	-	-	-	2 50	10 00	
Cash to Alaska Freight	-	-	-	1 25	1 25	11 25
San Francisco, Cathedral Mission of the Good Samaritan						
Cash to Advent Offering	-	-	-	16 82	16 82	16 82
San Francisco, S. John's Sunday School						
Cash to Advent Offering	-	-	-	30 00	30 00	30 00
San Francisco, S. John's Working Branch						
Box to Maria Kip Orphanage	-	-		2 00	2 00	2 00
San Francisco, S. Luke's Sunday School						
Cash to Advent Offering	-	-	-	29 30		
Font Fund, 1901	-	-	-	1 00	30 30	30 30
San Francisco, S. Luke's Working Branch						
Box to Christ Mission, Anvik, Alaska	-	-		11 05	11 05	11 05
San Francisco, S. Paul's Sunday School						
Cash to Advent Offering	-	-	-	7 21		
Font Fund, 1901	-	-	-	1 55	8 76	8 76
San Francisco, S. Peter's Sunday School						
Cash to Font Fund, 1901	-	-	-	1 80	1 80	1 80
San Francisco, S. Stephen's Sunday School						
Cash to Advent Offering	-	-	-	18 87	18 87	18 87
San Francisco, Trinity Sunday School						
Cash to Advent Offering	-	-	-	49 61		
Font Fund, 1901	-	-	-	1 00	50 61	50 61
San Francisco, Maria Kip Orphanage, Holy Innocents'						
Cash to Woman's Auxiliary Altar Fund, 1901				2 60	2 60	2 60
Sausalito, Christ Church Sunday School						
Cash to Font Fund, 1901	-	-	-	50	50	50
Stockton, S. John's Sunday School						
Cash to Advent Offering	-	-	-	11 10		
Font Fund, 1901	-	-	-	50		
Expenses, Department	-	-		50	12 10	12 10
Stockton, S. John's Working Branch						
Purchase to S. James' Monterey	-	-		85	85	
Cash to United Offering, 1901	-	-		5 00		
Font Fund, 1901	-	-	-	50		
Expenses, Department	-	-		50	6 00	6 85

Through Diocesan Department

Cash to Advent Offerings by Sunday Schools not Branches

Baden, Grace	-	-	-	-	3	20
Bakersfield, S. Paul's	-	-	-	-	9	52
Belmont, Good Shepherd	-	-	-	-		65
Centreville, S. James'	-	-	-	-	1	30
Corte Madera, Holy Innocents'	-	-	-	-		83
Fresno, S. James'	-	-	-	-	15	35
Fresno Flats, Christ Mission	-	-	-	-	1	00
Haywards, Trinity	-	-	-	-	2	25
Lodi	-	-	-	-	1	05
Los Gatos, S. Luke's	-	-	-	-	9	00
Merced, S. Luke's	-	-	-	-	2	00
Modesto, S. Paul's	-	-	-	-	1	00
Niles, Trinity	-	-	-	-	2	55
Pacific Grove, S. Mary's-by-the-Sea	-	-	-	-	3	86
Palo Alto, All Saints'	-	-	-	-	6	00
Redwood City, S. Peter's	-	-	-	-	3	70
San Francisco, Grace	-	-	-	-	34	71
San Mateo, S. Matthew's	-	-	-	-	18	00
San Rafael, S. Paul's	-	-	-	-	3	90
Santa Clara, Holy Saviour	-	-	-	-	3	00
Santa Cruz, Calvary	-	-	-	-	14	86
Sonora, S. James'	-	-	-	-	6	00
Walnut Creek, S. Paul's	-	-	-	-		50
Watsonville, All Saints'	-	-	-	-	5	00
						149 23

Babies' Branch

Cash to United Offering, 1901	-	-	-	-	1	25
Bishop of Alaska	-	-	-	-	25	00
Bishop of Arizona and New Mexico	-	-	-	-	10	00
Miss Bull, Orphanage, Kyoto, Japan, for little Takue	-	-	-	-	25	00
Bishop's Auxiliary Fund	-	-	-	-	25	00
S. Dorothy's Rest	-	-	-	-	9	60
Miss Emery, Little Helpers' Bed, Raleigh, N. C.	-	-	-	-	5	00
Miss Emery, Angelica Church Hart Day School, Wuchang	-	-	-	-	5	00
Miss Emery, Little Helpers' Day School, Shanghai	-	-	-	-	5	00
Babies' Branch Expenses	-	-	-	-	7 62	118 47 118 47
						\$5,774 41

SUMMARY

Woman's Auxiliary

Value of Boxes	-	-	-	-	-	\$1,446 11
Cash	-	-	-	-	-	3,608 46 \$5,054 57

Junior Department

Value of Boxes	-	-	-	-	-	86 10
Cash	-	-	-	-	-	633 74 719 84

Grand Total - - \$5,774 41

CLASSIFIED DISTRIBUTION

Value of Boxes

Domestic—Woman's Auxiliary	-	-	-	\$497 20	
Junior Department	-	-	-	43 70	\$540 90
Foreign—Woman's Auxiliary	-	-	-	10 50	10 50
Diocesan—Woman's Auxiliary	-	-	-	938 41	
Junior Department	-	-	-	42 40	960 81
Total Boxes	-	-	-		\$1,532 21

Cash

Domestic—Woman's Auxiliary	-	-	-	\$510 50	
Junior Department	-	-	-	136 25	\$646 75
Foreign—Woman's Auxiliary	-	-	-	150 50	
Junior Department	-	-	-	37 07	187 57
Domestic and Foreign Board, General—					
Woman's Auxiliary	-	-	-	20 50	20 50
United Offering, 1901—Woman's Auxiliary	-	-	-	1,069 32	
Junior Department	-	-	-	5 00	1,074 32
United Offering, 1904—Woman's Auxiliary	-	-	-	5 00	
Junior Department	-	-	-	1 25	6 25
Diocesan—Woman's Auxiliary	-	-	-	1,852 64	
Junior Department	-	-	-	454 17	2,306 81
Total Cash	-	-	-		\$4,242 20

Gifts to Church Furnishings and Vestments have been accredited according to values in above tables.

The distribution is as follows :

Altar linen to: Christ Mission, San Jose ; S. Luke's Hospital, San Francisco ; S. Michael's, Tuolumne ; S. Andrew's, Ben Lomond ; Trinity, Niles ; Point Richmond Mission ; Trinity, Grangeville, Idaho, District of Spokane.

Surplices and Cottas to: Holy Saviour, Santa Clara ; Diocesan Lay Reader ; Missionary, San Ardo ; Linen for Priest's Vestments, Cathedral Mission, San Francisco.

Stoles: White, to Diocesan Missionary ; Violet, to S. James', Paso Robles ; White, undesignated ; Red, to Missionary in Arizona ; Purple to Cathedral Mission, San Francisco.

Communion Sets to: Chaplain, U. S. A. ; Trinity, Grangeville, Idaho ; Sisson Mission, District of Sacramento ; S. Michael's, Tuolumne, California.

Altar Cloths: Embroidered, White, to St. Matthew's, San Ardo ; Black, to Holy Innocents', Corte Madera ; Black, to Japanese Mission, San Francisco.

White Dossal to S. Matthew's, San Ardo.

Carved Oak Memorial Altar to Holy Innocents', Corte Madera.

Carved Wood Altar Cross to S. Michael's, Tuolumne.

Lecturn Bible to: S. Michael's, Tuolumne. Lecturn Bible to Point Richmond Mission.

Silver Plated Font to St. Michael's, Tuolumne.

**Extracts from a Sermon in Memoriam of the Late
Mrs. Mary Elizabeth Heath**

Preached by the RIGHT REV. W. F. NICHOLS, D.D., Bishop of California

O Woman, great is thy faith.

S. MATTHEW, xv : 28.

So our Lord summed up a woman's strength of character! And it was not the mere passing word of tribute to a trait He came upon in His earthly life. He identified a type for all time. A rare and precious characteristic, in contrast with the little faith which He had betimes to rebuke even in His own Apostles, it is a rare and precious quality ever standing out to relieve the world's faintness of heart toward Him. A type from the coasts of Tyre and Sidon, it is as well a type on the Pacific Coast, or wherever else noble womanhood exhibits it.

* * * * *

We can, I believe, in any fond estimate of human character, gain much from our Lord's words of commendation, and those of our text seem to me to be singularly fitting to the life and life-work of her whom we especially hold in loving remembrance to-day—Mrs. Mary Elizabeth Heath. And now one feels a sense of the limitations under which reference to her at this time should be made. There are some things too tender and sacred to be dwelt upon in public utterance. What a mother she was! we can only echo—to do more would be to break in upon the sanctities of that singularly happy home circle. What a friend she was! Each will have some cherished memories of that—her life was, as it was sometimes called, “a Christmas gift,” as Christmas Day, 1829, was her birthday, in Richmond, Virginia. Eulogy of her as friend, however, seems almost like trying to multiply words in describing fragrance, while the very perfume itself is in the air. We may, however, both for our comfort and our souls' health thank God for her good example as we say, What a faith she had! And in that we see something of the source of power as the good mother and the good friend. Need we hesitate to call it a great faith? It had the very marks of that type of which our Lord said, “O woman great is thy faith.”

It was a faith at its best when it was evoked by that burden-bearing for others which fulfills the law of Christ. If in human life we speak of a cup full of sorrow, thank God, we may also speak of faith for it filling to the very brim the law of Christ and of duty. The sublimity of the human character of Christ, however beyond us in the degree of its attainment, in *kind* was the perfect faith equal to the cup of the Crucified. And His was faith for the whole world, as ours may be put to the test for any smaller world for which we may love and pray and work and suffer.

Pardon me if I recall one of the early letters which came to me from California, when I knew little or nothing of those who had called me here. It was enclosed to me by one member of this Auxiliary and written to her by another member. Mrs. Pomeroy, of dear memory, who was at the time in the East, sent me,

knowing how much it would interest me, a letter to her describing Convention days, from Mrs. Heath. That one letter was an evidence to me of a kind of womanhood here which would ever give a bishop courage in his work, and from that day to this many and many a kind deed and cheery word and wise and devoted act for the Church have enabled me to feel not only what a friend she was, but what a faith she had. It so happened again that Mrs. Heath and I followed the remains of Mrs. Pomeroy to their last resting place in the same carriage, and again in the shadow of that loss to the Church, there were many marks of her brave faith which came out to me as she recalled California Church history and her associations with California life. She came to this coast in the early days of 1852, spending a considerable time in Oakland and having much to do with the starting of S. John's parish under the Rev. Mr. Akerly. In 1872 the condition of Mr. Heath's health took her with him to S. Helena, where she was active in establishing the services of the Church, serving herself several years as superintendent of a flourishing Sunday School. Coming to San Francisco she was one of the founders of the Woman's Auxiliary in this Diocese, First Vice-President until 1884, Mrs. Pomeroy being President, and President from 1884 to 1893, untiring and efficient throughout her tenure of office. And after feeling obliged to relinquish her office, her heart was ever in the Auxiliary work and she never lost an opportunity to further it. What this S. Luke's Parish was to her and she to it, I need not say here. But a just epitome of all she undertook was that in it—and to begin things in a new country, as California was in great measure, nothing is more needed—great was her faith.

And how direct and true a faith it was. And it would sometimes seem that the new generation, and especially California at the present moment, cannot estimate too highly that peculiar type of faith with which our Church has been blessed. We have much to be thankful for in the specializing of woman's work and the careful training for the various fields so nobly occupied by Sisterhoods, Deaconesses, Trained Nurses, and the like. There is wonderful progress in all these directions and abundant room for more. But none of these can supplement or be substituted for, the noble womanhood that must ever in the home life, in the bringing up of children, in society, in the general congregation, in the secular as distinct from the religious life, use great faith to great result. These later specialties in our American Church we ought to do, but we must be very careful not to leave the other undone. And any conception of the sphere of womanhood in the Church which is only concerned with the specialized training, and fails to recognize the truly consecrated life of woman in her home or society, is faulty in scope and is apt to be narrowing and nagging in tone and spirit. One sometimes finds a sentiment abroad that all holy womanhood must be moulded after a conventual rule as much as possible—blessed as that is for those who have the vocation to it, there is no better exposure of the fallacy that underlies such a sentiment than in the lives of some of our California Churchwomen who have done their duty in the station of life to which it pleased God to call them. Their rule the simple rule of a direct faith, of effectual fervent prayer founded upon that faith, and of worship of Him into whose presence they carried the problems, and the trials, and the trips they found out in the thick of this stormy life—great was their faith. Evil will be the day for the Diocese and the Church when we cease to value that precious heritage, evil the day when we think we can get along without it, or pride ourselves as if we had found something better for a new generation. For it was a victorious faith, it rose above

"Sin and fear and care.
Joy to find in every station
Something still to do and bear."

It was a faith which used the altar in God's church as a throne of its greatness and its triumph, which used the altar as the congregation must use it, with ready rather than rigid approach, able to go to the Holy Communion out of the pressing battle of life for quiet refuge and for prompt strength. The altar of the congregation for such use cannot be hedged about with rules and questions of hours and exactions of approach that it can in a convent with its cloistered calm. And on this day when our Diocesan Auxiliary presents its offering for altars in our new churches—altars for *congregations*—we recall Mrs. Heath's interest in supplying one mission church here and another there with worthy altars, and feel the fitness and the fondness of making that to be put in Holy Innocents' Church, Corte Madera, a memorial to her. The great home of great faith is the altar.

It was great faith which made the mother the great strength of the home, which made the friend the sunshiny example of what it is to have Christ in the life, which made the Church worker and Auxiliary officer and leader the ever sound counsellor and the ever happy helper. It was her great faith that delivered her from "the disquietude of this world" and now permits her to behold the King in His beauty.



Counsels to Parochial Officers

Impress upon the women of your parish that they are, by virtue of their baptism, members of the Auxiliary. Urge them to recognize this claim by working along the appointed lines, and by giving such dues as your Parish Branch may settle upon.

When there is no Parish Branch, you may become a member of the Diocesan Branch by paying one dollar annually or by giving regularly to the Bishop's Auxiliary Fund.

Every Branch is expected to give to the United Offering, to the Bishop's Auxiliary Fund and to Diocesan Expenses, to report to Diocesan Treasurer, and to do its share of the work as planned by Diocesan Officers.

After this, develop any general or diocesan work that has the approval of your rector, after consulting with Diocesan Officers.

The "**United Offering**" is the Thankoffering presented at every Triennial service of the Woman's Auxiliary. The offering of 1904 will be laid on the Altar at the Triennial Celebration, October, 1904, in Boston. It will be given for Woman's Work in the Domestic and Foreign Fields. Every woman is given an opportunity to share in the great Thankoffering. Mite Boxes will be sent on application, and gifts or pledges received at any time.

The Bishop's Auxiliary Fund is placed by the Woman's Auxiliary at the Bishop's disposal for diocesan missionary work carried on by women. It supports at present a sister assisting the City Missionary in San Francisco, and a deaconess working most acceptably in a mining district.

The Auxiliary asks every Churchwoman in the Diocese to contribute to the fund, through envelopes which will be furnished.

Every congregation is asked to give one dollar annually to the Altar Fund, and thus to share in erecting an Altar in a new mission every year. See that your Church responds. Payments are due on the Feast of the Transfiguration, August 6th.

Every Sunday School and working branch of the Junior Auxiliary is asked to give fifty cents or more on Whitsunday to the Font Fund that a stone font may be given every year.

Take the *Pacific Churchman* and read to your Branch the Woman's Auxiliary page. Keep ready for reference a Church Almanac with clergy list, the last report of your Diocesan Branch, Miss Emery's last report and the Spirit of Missions; and keep in supply, copies of the Auxiliary prayers, leaflets from the Church Mission House, mite chests for the United Offering, Auxiliary Fund envelopes and blanks for box lists, and leaflets for the Junior Auxiliary work.

When a project is laid before your Branch, do not fail to report its action, after due deliberation.

When you begin a box, advise the recipient and the Diocesan Secretary. When you ship it, advise again, giving date and mode of shipment. If you cannot secure free shipment, prepay charges on *all* packages to clergy, institutions and diocesan officers.

Remit money by express, P. O. order, bank drafts or checks on San Francisco banks; *never by bank notes*.

Report changes of address, or temporary absence, and do not fail to notify Secretary when changes occur in your list of officers. Apply to the Secretaries of the various departments for further information.

RECTORS! One Word!!

The Church Press has moved to 23 Davis Street,
Room 32, Tel. Clay 846. We guarantee perfect
satisfaction in all our work, and have had words
of commendation from Bishop and Clergy.

The OCCIDENTAL HOTEL

SAN FRANCISCO

A quiet, centrally located house, convenient to churches, shops and places of interest. The use of its parlors is respectfully tendered to ladies when down town, or visiting in the city for a day. LUNCHEON, from 12:30 to 2:30, fifty cents. Rooms with board, \$2.50 and upward. Rooms without board, \$1.00 and upward.

W. B. HOOPER, Lessee

CUNNINGHAM, CURTISS & WELCH

STATIONERS, BOOKSELLERS
PRINTERS, BOOKBINDERS
AND LITHOGRAPHERS

317, 319, 321 Sansome Street
SAN FRANCISCO

ST. LUKE'S HOSPITAL

VALENCIA ST. NEAR JUNCTION OF MISSION ST., SAN FRANCISCO

A general hospital founded July 1st, 1871, under the auspices of the Episcopal Church. Receives patients without regard to nationality, creed, or religious opinion, situated in a quiet, healthful locality, easy of access. Rooms comfortably furnished and warmed. Rates for board, etc. from \$10 to \$30 per week, but does a large share of charity work. The Training School for nurses established in 1888, has at present forty pupils—course of instruction three years which is thorough and complete. For further information, address:

COL. J. V. D. MIDDLETON, *President and General Manager*

S. MATTHEW'S SCHOOL FOR BOYS

SAN MATEO, CAL.

founded in 1866, offers all the advantages of a thoroughly equipped Church School.

For Illustrated Catalogue, address

REV. W. A. BREWER, A. B., *Rector*

ARMITAGE ORPHANAGE Of San Francisco

FOR ORPHANED, HALF ORPHANED
AND DESTITUTE BOYS

Pure air, wholesome food, best of care. The payment of \$2.50 monthly will support beneficiary. Annual subscription, \$3.00. Life membership, \$100.00.

MRS. E. D. BEYLARD, *Sec.*
San Mateo, Cal.

SECURITY SAVINGS BANK

MILLS BUILDING

222 Montgomery St., San Francisco

Paid up Capital, Surplus and
Undivided Profits - \$500,000

Deposits, July 1st, 1902, \$3,875,378.90

Interest paid on Deposits. Loans made.

WILLIAM BABCOCK, President

S. L. ABBOT, Jr., Vice-President

FRED W. RAY, Secretary

DIRECTORS

William Alvord, William Babcock, Adam Grant,
R. H. Pease, S. L. Abbot, Jr., O. D. Baldwin,
H. H. Hewlett, E. J. McCutchen, L. F. Monteagle.

THE NEW BOOK STORE

16 Grant Avenue

Between Market and Geary St.

We carry the best books in every
department of literature.

We are sure that a visit to our store
will prove a pleasure. A continuance
of your esteemed patronage is cordial-
ly asked.

L. H. CARY, Manager.

S. MARGARETS' SUBURBAN SCHOOL

SAN MATEO, CALIFORNIA

JUNIOR—Primary and Intermediate
SENIOR—Academic and Collegiate

A high standard of Scholarship.
Modern Methods. Special Care
in harmonious development of
character and individual physical
training.

MISS IDA L. TEBBETTS, Principal

ORDER OF THE

GOOD SHEPHERD CLOTHING BUREAU

Clothing of all kinds, bedding and
household goods to be sold at nominal
prices to the deserving poor are most
earnestly solicited.

Address

CLOTHING BUREAU
246 Second Street

near Folsom

MARIA KIP ORPHANAGE FOR GIRLS

Corner of Lake St. and 7th Avenue
Telephone, Steiner 956

Annual Subscription, \$3.00
Life Membership, \$100.00

Donations in Money, clothing, fresh or dried
fruit thankfully received. Boxes will be
carried free by Wells, Fargo & Co.

PRESIDENT

Miss GWIN, The Knickerbocker

SECRETARY

MRS. THOS. P. WOODWARD, 2741 Pine St.

TREASURER

Mrs. SYDNEY WORTH, 1721 Vallejo St.

House Mother, Mrs. ALICE M. FOX
The Orphanage

Shainwald, Buckbee & Co.

A Corporation

REAL ESTATE

Special attention given to the Collection
of Rents. Insurance Agents.

Telephone, Private Exchange, 40

218-220 Montgomery St.

MILLS BUILDING

San Francisco