

*Miss Emery*

TWENTY-SIXTH ANNUAL REPORT  
OF THE  
MASSACHUSETTS BRANCH  
OF THE  
*Woman's Auxiliary*  
TO THE  
BOARD OF MISSIONS.  
1903.

The monthly meetings are held the third Wednesday of the  
month in St. Paul's Chapel, Boston, at 2.30 P.M.  
The Annual Meeting the third Wednesday of October.  
The Anniversary the first Wednesday in November.  
The Quiet Day, Thursday, January 5, 1904.

TWENTY-SIXTH ANNUAL REPORT  
OF THE  
MASSACHUSETTS BRANCH  
OF THE  
*Woman's Auxiliary*  
TO THE  
BOARD OF MISSIONS.

---

OCTOBER, 1903.

---

BOSTON:  
DAVID CLAPP & SON, PRINTERS.  
291 Congress Street.  
1903.

## ERRATA.

---

The Quiet Day occurs on Thursday, Jan. 7, 1904, instead of Jan. 5 as on cover.

On page 36, "Memorial to Miss Wilson" should read *Mrs.* Wilson.

THE

THE

“And I, if I be



lifted up from the earth, will draw all men unto me.”

## OFFICERS FOR 1903-4.

*President*, Mrs. S. VAN RENSSELAER THAYER, 30 *The Fenway*, Boston.

*Secretary*, Miss ALICE M. MORGAN, 6 *Mercer Circle*, Cambridge.

*Treasurer*, Mrs. H. S. MACOMBER, 162 *Cypress St.*, Brookline.

*Vice* { Mrs. H. C. COOK, *Mellen House*, Fall River,  
In charge of the South Eastern District.  
*Presidents*, { Miss MARY T. SPALDING, 28 *Green Street*, Newburyport,  
In charge of the North Eastern District.

## COMMITTEES.

### DOMESTIC MISSIONS.

*Chairman*, Miss A. R. Loring, *Auburndale*.

*Secretary*, Miss Elizabeth H. Houghton, 58 *Garden St.*, Cambridge.

*Treasurer*, Mrs. Joseph W. Woods, 2 *Chestnut St.*, Boston.

*Assistant Secretary* (in charge of Diocesan Missions), Miss M. E. COGSWELL, 61 *Kirkland St.*, Cambridge.

### INDIAN AND COLORED PEOPLE'S MISSION.

*Chairman* of the Dakota League (Indian Missions), Miss Whittemore, 21 *Carlton St.*, Brookline.

*Secretary*, Mrs. James M. Hubbard, 382 *Marlborough St.*, Boston.

*Chairman* of Missions for Colored People of the South, Miss Jennie McIntosh, 2859 *Washington St.*, Roxbury. Tel. 421-3 Roxbury.

*Treasurer*, Miss Harriet E. Caryl, 82 *Myrtle St.*, Boston.

### FOREIGN MISSIONS.

*Chairman pro tem*, in Mrs. Hall's absence, Mrs. D. C. Scudder, 250 *Newbury St.*, Boston.

*Secretary*, Mrs. George G. Hayward, 165 *Newbury St.*, Boston.

*Treasurer*, Mrs. Arthur W. Hooper, 20 *Chestnut St.*, Brookline.

### MISSIONS IN HAITI, MEXICO AND BRAZIL.

*Chairman*, Mrs. Edward Abbott, 11 *Dana St.*, Cambridge.

*Secretary and Treasurer*, Miss S. B. Howe, *Essex St.*, Longwood.

### JUNIOR DEPARTMENT.

*Chairman*, Miss Lucy C. Sturgis, 29 *Hereford St.*, Boston.

*Secretary*, Miss Caroline A. Derby, *The Ludlow*, Copley Sq., Boston.

*Treasurer*, Mrs. Malcolm Storer, 5 *Brimmer St.*, Boston.

### ALTAR SOCIETY.

*President*, Miss C. V. Parker, 447 *Marlborough St.*, Boston.

### CHURCH PERIODICAL CLUB.

*Diocesan Correspondent*, Miss Marian De C. Ward, 415 *Beacon St.*, Boston.

## BY-LAWS.

---

I. There shall be a Public Anniversary of the Society in the Autumn of each year, with missionary addresses or a sermon; upon which occasion a collection shall be taken up in behalf of the Society.

II. There shall be an Annual Meeting of the Society upon the third Wednesday in October, unless otherwise duly notified, at such time and place as the Officers and Standing Committee shall indicate.

III. The election of Officers and of the Standing Committee shall take place at the Annual Meeting, and they shall continue in office one year, or until their successors shall have been appointed.

IV. In case of the vacancy of any office by the death or removal of its occupant, the same may be filled by nomination of the Standing Committee, which nomination shall be approved by the Society at a Stated Meeting; and any person so elected shall continue in office until the next Annual Meeting.

V. Ladies coöperating with the Massachusetts Branch of the Woman's Auxiliary to the Board of Missions, will be considered members of the Society.

VI. Ladies appointed by the ministers, or by the benevolent organizations of Churches working with "The Woman's Auxiliary, etc.," as delegates, shall be enrolled accordingly, and shall be the members entitled to vote at its meetings; Provided, that the number of such delegates from any church shall not exceed three for each division of the work undertaken by said church or any of its working Societies. The Officers and Standing Committee shall also be entitled to vote at its meetings.

VII. The Stated Meetings of the Society shall be on the third Wednesday of each month.

VIII. At Stated or Special meetings of the Society, twenty members entitled to vote shall constitute a quorum; but at the Annual Meeting, members representing not less than one-third of the Churches connected with the Massachusetts Branch of the Woman's Auxiliary, or else not less than forty members entitled to vote, shall be necessary to form a quorum.

## MASSACHUSETTS BRANCH OF THE WOMAN'S AUXILIARY.

### TWENTY-SIXTH ANNUAL REPORT.

---

IN reviewing the past year, we must first recall the successful celebration of our Twenty-fifth Anniversary. There were many faithful women gathered in Trinity Church on that November morning, some few of whom had from the very beginning of our organization borne the "burden and heat of the day." The suggestion of a Thank Offering met with approval and a very large majority of the Massachusetts branches placed on the Altar their gift, in grateful remembrance of what little they had been allowed to do for the cause of Missions, and as an earnest of continued future efforts. The amount given at that service went unappropriated to the Board of Missions to be divided between Domestic and Foreign work. The report of this Anniversary meeting has been typewritten, and will be preserved by the Secretary for future reference. As a record of the work and history of the Massachusetts Branch of the Woman's Auxiliary this report is of value.

The South Eastern District has added another year of marked progress. The annual meeting in Bridgewater was the "banner" day in its annals. The occasion was full of inspiration to all fortunate enough to have been present.

This last report from Miss Rodman closes her work as Vice President of the District. It is not only to the Board that this her necessary resignation comes with regret, but to the parishes where for so many years her watchful interest has helped to quicken the zeal which the women are yearly developing in Missionary work. We give her our sincere thanks for all the thought, the care, and the prayers she has given during these past years to the organizing and enlarging of our branch. She asks that the kindness shown her may be continued to her successor, and retires with deepest regret.

The Vice President of the North Eastern District has been in office too short a time to report in detail, as she would like to do, the improvements that have been undertaken. She speaks of the foundations laid and help that has been given her by her predecessor. Another year she hopes the few parishes that have so far failed to respond, will come into line with the Auxiliary's requests, and at least share in contributing to the United Offering. She reports the young branches of Ipswich and Amesbury as having given good assistance. The first annual meeting of the District held at Newburyport last

week was well attended and gives promise of an active future. Addresses were made by the Rev. Augustine Amory, Miss Julia C. Emery and Mrs. Tyler, and the meeting was very inspiring.

This year the Committee are hoping to make good the promise made to the outlying parishes of a Vice President to take charge of this new Central District.

Fifty-eight parishes responded last year to the call of the General Treasurer of our Branch, the largest number since the new plan of raising money for the general expenses of the Massachusetts Auxiliary has been originated.

The total receipts for the United Offering to date is \$850.89, but the coming year requires our best efforts to complete even the sum of our last offering.

The change in the manner of reporting our receipts, which was inaugurated some years ago, has not met with approval, and in the present report there is a return to the previous system of itemizing our accounts, which we hope will be more satisfactory to the parishes at large and bring to our friends a clearer statement of the condition of our finances.

#### **Domestic Committee.**

THE Domestic Committee has continued the work of preparing boxes and raising money to meet pledges for the missionaries and missionary institutions in the Domestic field, and has given proof during the past year of continued vitality and a growing consecration of spirit. It seemed, when the Diocesan Auxiliary lost the help of strong workers in the western part of Massachusetts, that the shortcoming in our efforts must be painfully evident for a while. That such has not been the case, however, we must thankfully acknowledge. We have supplied the personal needs of the missionaries assigned to us — in several cases exceeding expectations and hopes — and sometimes workers, who in past years feared to undertake a personal box, have surprised themselves in their successful efforts.

The money pledges have also been met, though we cannot boast as yet that the tithes have been brought into the store house with the completeness to which we are challenged in the book of Malachi. We can do more than we have done and must not rest satisfied with our attainments.

We are asked in the coming year to supply the salary of Miss Carter in Alaska and to be responsible for one-half of the support of a woman-worker in Porto Rico.

Miss Emberly, a trained nurse, is about to join Miss Carter at Skagway, thus adding great strength to the quartette of woman workers whom Massachusetts gave to Alaska last year.

#### **Diocesan Report.**

MISS AGATHA KING's work as the Diocesan Missionary supported by the Woman's Auxiliary has been most satisfactory and well commended by those under whose direction she labored. She began at Hyde Park under Archdeacon Babcock and from there went to Fall River, where her duties were chiefly at St. Matthew's Mission, under

the charge of Rev. Emilius W. Smith. She became very much interested in the English operatives, with whom she had great influence, partly because she is the daughter of an English clergyman.

Early in the summer she went to St. Martin's, New Bedford, where she worked under the Rev. Preston Barr, rector of the parish. She will continue her work there this fall.

**Dakota  
League.**

THE Dakota League acknowledges with gratitude the increasing interest of the parishes in Indian Missions, with the consequent meeting of all *financial* pledges to them.

The Committee wish to draw attention to the serious falling off of *industrial* help. Owing to the closing of St. Paul's School, Massachusetts has had but half the former assignment for Bishop Hare's work, and yet has utterly failed in sending her share of supplies to St. Mary's Boarding School, and also has had great difficulty in providing for the Cheyenne Catechists. Some generous boxes have been sent where there was no pledge, but while rejoicing in all good work we would urge greater conscientiousness as to accepting assignments sent to us by the General Secretary. We are glad to record among gifts for "Specials" a typewriter for Bishop Mann of North Dakota, also a generous response to Miss Stockdell's appeal for the Lemhi Indians. We note with interest the setting apart as Deaconess of Miss Bertha Sabine at Anvik, Alaska. She writes with deep appreciation of her Massachusetts helper, Mrs. Evans.

**Work Among  
Colored People.**

IN the work among colored people we have continued many of the pledges of former years, feeling sure that missions which had made good use of what had been given them in the past were worthy of our present help. Miss Wheeler, as our representatives, has given to St. Augustine's School another year of varied usefulness and returned there in September. The schools which we have helped have done good work and are a power in the Mission field.

The figures giving the result of our year's effort in money and boxes show that the work among the colored people has felt the loss of the parishes of Western Massachusetts. We hope to make this good by enrolling on our list of helpers many parishes as yet not associated with the Auxiliary.

Each year we make a decided gain in systematizing our work and to this end the conference of parish delegates held in the autumn contributes not a little, helping us to realize that it is only by an intelligent co-operation in effort that we can accomplish the full measure of what we are set to do.

**Foreign  
Committee.**

THE financial standing of the Foreign Committee is satisfactory. Miss Woodruff's salary and all the pledges and many of the scholarships have been paid. We assumed this year half the salary, \$250, of Miss Wall, a Massachusetts woman and an earnest worker in Japan

under Bishop McKim. This has been paid and we are ambitious to support her entirely next year. Three hundred and fourteen dollars were raised by friends, as a memorial to the late Mrs. Charlotte F. Wilson; the income of this fund will support a Bible Woman in China, and Miss Koo has been chosen for this position. Most interesting articles by Bishop Graves and Miss Crummer, in the *Spirit of Missions* for June, tell of the work of the Native Bible Women and its importance. Interest in China has been quickened by the visit to us of Miss Dodson. She spoke of the Mary A. E. Twing Memorial Building at St. Mary's Hall, given by the Woman's Auxiliary, which is nearly completed and will be of inestimable value. It is only in our Christian schools that the Chinese girls can obtain an education, and this new building will accommodate one hundred and twenty students. St. John's College for boys is also to have a new building. Contributions to this object have largely come from the Chinese themselves, and Dr. Pott is now in this country raising money to complete the fund. So the good work progresses, and the circle ever widens. In Africa, the native boys and girls in our schools are eagerly embracing Christianity and being led from gross superstition into a higher life, but helpers are sadly needed. The Rev. Mr. Matthews is entirely alone at St. John's School for boys at Cape Mount. An account of his work there, in the *Spirit of Missions* for May, is well worth the reading, and may sow the seed toward giving him the help that is imperatively needed. We have a number of new contributors among the parishes in our diocese. This is most encouraging, and leads us to hope that every parish may be represented at the time of the next Convention by gifts to Foreign Missions.

#### Mexico and Haiti.

In Mexico, beside the very small salaries of the paid workers and clergy, we need greatly constant and liberal gifts for the Dean Gray Memorial School, which educates young boys and men in secular subjects and trains them for service in the Church; for the Hooker Memorial School, which educates young women for useful lives and helpers in the Church; for the Normal School at Toluca, a more recent but an equally important part of our training work. A recent visit to Mexico by our Chairman has fully confirmed all her good opinions of the value and quality of the Mexican Church work.

Bishop Holly and his work in Haiti are known to all. In the midst of internal strife and revolution in the Island, his work goes steadily on. He should not suffer for the assistance he needs and expects from us.

In Brazil, Bishop Kinsolving, the American clergy and lay-workers and the native clergy are greatly encouraged on every hand. The people "receive them gladly," and the news of life and growth in the stations already established, and the need for new stations, comes to us every month. How devoted and brave, how self-sacrificing and earnest, are the workers in Brazil. Oh friends, who have helped in the past, do not let your interest flag. And we beg of those who have done *nothing* for *these* fields in the past, that they will now devote a part of

their money and prayers to the three countries, Mexico, Haiti and Brazil.

**Church Periodical Club.** THE Church Periodical Club shows steady growth, having increased its work noticeably during the past year. More parish branches have been formed, the financial report shows a decided gain over last year, and one cause for encouragement is the way in which societies of young people are becoming interested in this work which, in some of its phases certainly, is so admirably adapted to them. In spite, however, of this increase there is still very much to be done,—new fields to occupy and old ones to develope. Those who are best acquainted with the Society see most distinctly the great possibilities that lie before it, not only in supplying literature to those who care for it, but in creating a taste for what is good, and fostering that taste when once created.

The Altar Society will present a separate report.

We have to record the death this year of several of our oldest and most valued friends,—Mrs. Wilson, an original member of our board, Mrs. Greenleaf and Miss Fiske. We shall miss not only their very generous gifts, but what is of greater value, their interest and loving thought for every branch of mission work.

“For all the Saints who from their labors rest,  
Thy name, O Jesu, be forever blest.”

At the Sixth Conference of Parish Workers the subject especially designated for discussion was “The General Convention.” This became a matter of great importance for us, as a year from this month the Church will hold its forty-fourth Convention in this city. From San Francisco in 1901, quite across the continent to Boston in 1904, comes this Council, and it is hoped our knowledge of Missions will be very greatly enlarged as we listen to men and women who will assemble here at that time to tell of the advance of Christ’s banner, and ask for our sympathy and help in the struggle that is theirs in overcoming the obstacles that coldness and indifference place in the path of each Mission worker.

The Committee beg you will give much careful consideration to this Triennial meeting. To equal the hospitality shown in other cities we must be awake to the needs of the sister branches of our Auxiliary that will be gathered here at that time, and ready to lavish on them the time and attention which they have in their turn given to us. We shall ask your co-operation more definitely a little later, but we hope that each woman reached by this report will bear in mind the individual responsibility that comes on such occasions. We hope for their daily assistance during those three October weeks, and ask that our share in the United Offering to be presented at that time be not forgotten, but that it be made a full and sufficient sacrifice to our Lord.

One of our officers tells us of the reply given by a rector whose Bishop offered to hold a Quiet Day in his parish: “Bishop, this par-

ish does not need a Quiet Day, it needs an Earthquake." One cannot but hope that the influence of the Convention and contact with missionaries will act as the earthquake in stirring our hearts into a greater love for God and our fellowmen than it has ever before been our privilege to experience. Shall we not, however, be helped to this result by many days of quiet prayer?

For the Committee,

ALICE R. THAYER.

## SECRETARY'S REPORT.

---

NINE monthly meetings of the Woman's Auxiliary have been held during the past year in the Chapel of St. Paul's Church, Boston, and nine Committee meetings in the Diocesan House, also the Anniversary Meeting, the Quiet Day and the sixth Conference for Parochial officers.

The average attendance at the monthly meetings was seventy-five delegates, representing thirty-seven parishes. Six parishes were represented at every meeting, namely: Trinity Church, Boston; All Saint's, Dorchester; St. Paul's, Brookline; and Christ Church, St. John's and St. Peter's of Cambridge—Christ Church sending the largest number of delegates during the year, thirty-six in all. Other parishes may have been represented at every meeting, but as they did not register, they could not be put on record.

Five new Branches and one Guild have been formed, and one re-organized. The reports from the parishes show that 3,153 women are working for the Auxiliary, but this number is not so large as it should be, for many parishes omitted to give the desired information.

The Twenty-fifth Anniversary meeting took place in Trinity Church and Chapel, Boston, Nov. 5th. The Bishop of the Diocese celebrated the Holy Communion at the morning service, assisted by the Rev. Joshua Kimber, D.D., Rev. A. S. Lloyd, D.D., and several of the Boston clergy. At this service was presented the "Thank-offering" for General Missions, which amounted to \$1,136.09.

At the session in the Chapel the Bishop presided and the speakers were Mrs. Thayer, Miss J. C. Emery and the Rev. Joshua Kimber, D.D. At the afternoon meeting in the Church, the speakers were Bishop Mann of North Dakota, Rev. A. S. Lloyd, D.D., and Bishop Lawrence.

At the monthly meetings there have been eleven speakers, namely: Miss King, the Diocesan Missionary; Rev. L. B. Ridgely, China; Miss Ward, Church Periodical Club; Bishop Leonard, Utah; Honorable Emily Kinnaird, India; Mr. King, Sailor's Haven, Charlestown; Miss Stockdell, Boisé; Miss Dodson, Shanghai; Miss Deane, Circle City, Alaska; Rev. H. Forrester, Mexico; and Miss Wheeler, Raleigh, N. C.

The Quiet Day Services were held in the Chapel of Emmanuel Church, Boston, Thursday, January 8th, and were conducted by the Rev. A. S. Lloyd, D.D.

The Sixth Conference for Parochial Officers was held on Wednesday, March 21st, at the house of the President. There were present one hundred and three delegates from fifty-four parishes. The subject for discussion was "The Conventions Past and Future." Mrs. Mackintosh spoke of the Convention when it met in Boston twenty-seven years ago, and Miss Bumstead told of the last Convention in California in 1901. Miss Loring then spoke of the duties of a Diocesan Branch during a triennial meeting.

Seven thousand six hundred and seventy-five leaflets, reports, etc., and six hundred and forty-six letters have been sent out, and five hundred and twenty-five letters received by the Secretary. The increased number of leaflets, etc., sent out this year was owing to the twenty-fifth Anniversary Celebration.

Twenty-two parishes contributed \$850.89 to the United Offering, and fifty-eight sent \$168.43 for general expenses. Total number contributing either money or boxes during the year, one hundred and four.

Total receipts from all sources in money, \$12,992.67.

Estimated value of boxes, \$10,437.94.

Nine hundred and sixty-one mite boxes have been sent out during the year by the treasurer.

ALICE MANTON MORGAN,

*Secretary.*

## LIST OF BOXES, WITH VALUATIONS.

- AMESBURY.—*St. James's*.—Domestic, \$30. Colored People, \$10.45. Total, \$40.45.
- ANDOVER.—*Christ*.—Domestic, \$36.50. Colored People, \$10. Indian, \$12.50. Total, \$59.
- ARLINGTON.—*St. John's*.—Indian, \$35.
- ATTLEBOROUGH.—*All Saints* [Mission].—Colored People, \$10.
- AYER.—*St. Andrew's* [Mission].—Colored People (2), \$31. Indian, \$35. Total, \$66.
- BEVERLY.—*St. Peter's*.—Colored People (4), \$165.
- BOSTON.—*Advent*.—Domestic (3), \$135.65. Indian (2), \$162. Total, \$297.65.
- Ascension*.—Indian, \$25.
- Emmanuel*.—Domestic (3), \$422. Diocesan (2), \$352.95. Indian, \$171. Colored People, \$218.50. Foreign, \$33.90. Total, \$1198.35.
- Good Shepherd*.—Diocesan, \$30. Colored People, \$62.75. Foreign, \$78. Total, \$170.75.
- Messiah*.—Indian, \$101. Colored People, \$25. Total, \$126.
- St. Augustine's Mission*.—Colored People (4), \$35.
- St. John Eangelist*.—Domestic, \$190. Foreign, \$55. Total, \$245.
- St. Paul's*.—Domestic (5), \$900. Colored People, \$84.40. Total, \$984.40.
- St. Stephen's*.—Domestic, \$200.
- Trinity*.—Indian, \$30. Colored People, \$30. Total, \$60.
- BOSTON (ALLSTON).—*St. Luke's*.—Colored People, \$26.
- BOSTON (BRIGHTON).—*St. Margaret's*.—Colored People (2), \$65.
- BOSTON (CHARLESTOWN).—*St. John's*.—Colored People, \$15.
- BOSTON (DORCHESTEE).—*All Saints*.—Domestic, \$125. Colored People, \$39. Total, \$164.
- St. Mark's*.—Colored People (2), \$83.50.
- St. Mary's*.—Colored People (2), \$100.
- BOSTON (JAMAICA PLAIN).—*St. John's*.—Domestic, \$45. Diocesan, \$15. Total, \$60.
- BOSTON (MATTAPAN).—*Holy Spirit*.—Domestic, \$24.10. Colored People, \$55. Total, \$79.10.
- BOSTON (ROXBURY).—*St. James's*.—Diocesan, \$8. Colored People (3), \$95. Total, \$103.
- St. John's*.—Domestic, \$57.40. Colored People (2), \$42.50. Foreign, \$34.70. Total, \$134.60.
- BOSTON (SOUTH).—*St. Matthew's*.—Colored People, \$50.
- Redeemer*.—Domestic, \$28.25.
- BOSTON (WEST ROXBURY).—*Emmanuel*.—Domestic, \$45. Colored People, \$53. Total, \$98.
- BRIDGEWATER.—*Trinity*.—Colored People, \$42.
- BROOKLINE.—*All Saints*.—Domestic (2), \$79.15. Diocesan (3), \$89. Total, \$168.15.
- St. Paul's*.—Domestic, \$125. Indian, \$80. Colored People, \$50. Total, \$255.

- CAMBRIDGE.—*Christ*.—Domestic (4), \$159. Diocesan, \$178.50. Colored People (2), \$31.25. Total, \$368.75.  
*St. Bartholomew's*.—Foreign, \$110.  
*St. John's Memorial*.—Domestic (2), \$227.10. Indian, \$80.20. Colored People, \$80.40. Total, \$387.70.  
*St. Peter's*.—Domestic, \$100.60.  
*St. Philip's*.—Colored People (2) \$107.65.
- CHELSEA.—*St. Luke's*.—Domestic, \$20.
- CONCORD.—*Trinity*.—Colored People, \$75.
- DEDHAM.—*St. Paul's*.—Diocesan, \$12. Indian, \$39.50. Total, \$51.50.
- EVERETT.—*Grace*.—Diocesan, \$10.50.
- FALL RIVER.—*Ascension*.—Domestic, \$67. Diocesan, \$15. Indian, \$32. Colored People, \$45. Total, \$159.  
*St. James's*.—Colored People, \$37.25.  
*St. John's*.—Colored People (2), \$83.25.  
*St. Luke's*.—Diocesan, \$2. Colored People, \$34. Total, \$36.
- HANOVER.—*St. Andrew's*.—Diocesan, \$25. Indian, \$13. Total, \$38.
- HAVERHILL.—*Trinity*.—Domestic, \$29.
- HINGHAM.—*St. John Evangelist's*.—Diocesan, \$25.
- HOPKINTON.—*St. Paul's*.—Colored People, \$44.
- HYDE PARK.—*Christ*.—Diocesan \$15.
- IPSWICH.—*Ascension*.—Diocesan, \$9; Colored People (3), \$120. Total, \$129.
- LAWRENCE.—*Grace*.—Domestic, \$75. Colored People, \$50. Total, \$125.
- LONGWOOD.—*Our Saviour*.—Domestic, \$95.50. Diocesan, \$18. Indian, \$90. Colored People, \$125. Total, \$328.50.
- LYNN.—*St. Stephen's*.—Indian, \$91.79. Colored People, (2), \$40. Total, \$131.79.
- MALDEN.—*St. Paul's*.—Colored People, \$10.
- MARION.—*St. Gabriel's*.—Colored People, \$39 50.
- MEDFORD.—*Grace*.—Domestic, \$60. Diocesan, \$8. Colored People, \$10. Total, \$78.
- MELROSE.—*Trinity*.—Domestic (2), \$66.40. Colored People, \$11.50. Total, \$77.90.
- MILTON.—*St. Michael's*.—Domestic, \$50.
- NANTUCKET.—*St. Paul's*.—Diocesan, \$67.
- NEW BEDFORD.—*Grace*.—Domestic, 40. Indian, \$84.80. Colored People (2), \$155.50. Total, \$280.30.  
*St. James's*.—Indian, \$10. Colored People, \$10. Total, \$20.  
*St. Martin's*.—Colored People (2), \$26.15.
- NEWBURYPORT.—*St. Paul's*.—Domestic, \$153.35. Indian, \$12. Colored People, \$135. Total, \$300.35.
- NEWTON.—*Grace*.—Domestic (3), \$149.65. Colored People, \$17.25. Total, \$166.90.
- NEWTON (AUBURNDALE).—*Messiah*.—Diocesan, \$21 50.
- NEWTON (CENTRE).—*Trinity*.—Colored People, \$12.
- NEWTON (CHESTNUT HILL).—*Redeemer*.—Domestic, \$179.85. Diocesan, \$6.75. Indian, \$20. Colored People, \$10. Total, \$216.60.
- NEWTON (LOWER FALLS).—*St. Mary's*.—Domestic (2), \$32.70. Colored People, \$75.50. Total, \$108.20.
- NEWTON (NEWTONVILLE).—*St. John's*.—Domestic, \$30.
- NORTH ANDOVER.—*St. Paul's*.—Colored People (2), \$30.
- NORTH ATTLEBOROUGH.—*Grace*.—Domestic, \$35.
- SALEM.—*Grace*.—Domestic (3), \$134.25.  
*St. Peter's*.—Domestic, \$85.40. Colored People, \$63. Total, \$148.40.

SHARON.—*St. John's*.—Colored People, \$5.

SOUTHBOROUGH.—*St. Mark's*.—Diocesan (2), \$31.

TAUNTON.—*St. Thomas's*.—Domestic, \$191. Colored People, \$40. Total, \$231.

WAREHAM.—*Good Shepherd*.—Diocesan, \$5.

WATERTOWN.—*Good Shepherd*.—Indian, \$22. Colored People, \$30. Total, \$52.

WINCHESTER.—*Epiphany*.—Domestic, \$2.50. Diocesan, \$5. Total, \$7.50.

WOLLASTON.—*St. Chrysostom*.—Domestic, \$33.60. Diocesan, \$12.40. Colored People (3), \$54.80. Total, \$100.80.

WOOD'S HOLL.—*Messiah*.—Diocesan, \$22.80

Friends, Domestic (2), \$130.

Friends, Diocesan, \$50.

Friends, Indian, \$40.

# TOTALS.

Domestic Missions	.	.	.	.	.	.	.	.	\$4,589.95
Diocesan Missions	.	.	.	.	.	.	.	.	1,034.40
Indian Missions	.	.	.	.	.	.	.	.	1,186.79
Colored Missions	.	.	.	.	.	.	.	.	3,013.10
Foreign Missions	.	.	.	.	.	.	.	.	311.60
Massachusetts Altar Society	.	.	.	.	.	.	.	.	302.10
									<hr/>
									\$10,437.94

Dr. FANNY MACOMBER, *General Treasurer, in account with*

SEPTEMBER 1, 1902, to SEPTEMBER 1, 1903.

GENERAL EXPENSES.

Balance on hand		\$174 10
To cash from Offertory, 25th Anniversary Service, P.M.	\$106 03	
“ “ Special, from 22 persons, for 25th Anniversary expenses	285 00	
“ “ from Offertory, “Quiet Day” at Emmanuel Church	23 79	
“ “ Contributions at Monthly Meetings	35 28	
“ “ Sale of Photograph and “Church Militant”	2 90	
“ “ Mass Altar Society and Junior Auxiliary, for printing	9 25	
“ “ Dividend from American Screw Co.	20 00	
“ “ 58 Parish Branches	189 43	671 68
		<u>\$845 78</u>

SPECIALS FOR MISSIONS.

To cash from 25th Anniversary “Thank-Offering”	\$1,136 09
“ “ “ Church of Our Saviour, Longwood	50 00
	<u>\$1,186 09</u>

LUCY LEE CHICKERING FUND.

One first mortgage 4% Bond, Southern Railway Co., St. Louis Division	1,000 00
Interest, July, 1902, to July, 1903	60 00
	<u>\$1,060 00</u>

BISHOP BROOKS MEMORIAL FUND.

To cash in Franklin Savings Bank, Boston	\$1,000 00
“ “ “ Brookline Savings Bank	287 30
“ “ Contribution to Fund, from Member of Trinity Church	15 00
“ “ Contribution to Fund, from Miss Wood’s Bible Class, Trinity Church	75 50
Accruing interest	64 11
	<u>154 61</u>
	<u>\$1,441 91</u>

BEQUEST OF MRS. SUSAN H. PAGE.

Ten shares in the Capital Stock of the American Screw Co., Providence, R. I.	\$1,000 00
Dividend, January, 1903	20 00
“ April, “	10 00
“ July, “	10 00
	<u>40 00</u>
	<u>\$1,040 00</u>

“UNITED OFFERING” FOR 1904.

To cash contributions representing 14 Parishes, Sept., 1901, to Sept., 1902	\$236 09
“ “ contributions representing 22 Parishes, Sept., 1902, to Sept., 1903	850 89
Interest	11 40
	<u>862 29</u>
Total to date,	<u>\$1,098 38</u>

Audited and found correct.

E. JAMES LORING.

*the Massachusetts Branch of the Woman's Auxiliary.*

Cr.

SEPTEMBER 1, 1902, to SEPTEMBER 1, 1903.

## GENERAL EXPENSES.

By cash paid Missionary Speakers . . . . .	\$109 00	
" " " 25th Anniversary expenses . . . . .	181 50	
" " " Room and Janitor at Diocesan House . . . . .	58 00	
" " " Sextons at St. Paul's, Trinity and Emmanuel Churches . . . . .	25 00	
" " " Luncheon on "Quiet Day" . . . . .	11 68	
" " " Printing . . . . .	166 01	
" " " Stationery and Postage . . . . .	59 18	\$610 37
Balance in Brookline Bank . . . . .		235 41
		<u>\$845 78</u>

## SPECIALS FOR MISSIONS.

By cash paid Mr. George C. Thomas, New York, for General Missions . . . . .	\$1,166 09	
" " " Treasurer of Foreign Committee for St. Mary's Orphanage, Shanghai . . . . .	20 00	
	<u>\$1,186 09</u>	

## LUCY LEE CHICKERING FUND.

One first mortgage 4% Bond, Southern Railway Co. (on deposit) . . . . .		\$1,000 00
Interest paid Domestic Missions . . . . .	40 00	
" on deposit, Brookline National Bank . . . . .	20 00	60 00
		<u>\$1,060 00</u>

## BISHOP BROOKS MEMORIAL FUND.

By cash in Franklin Savings Bank, Boston . . . . .	\$1,017 50	
" " " Brookline Savings Bank . . . . .	389 11	
" " " paid Foreign Missions . . . . .	35 30	
	<u>\$1,441 91</u>	

## BEQUEST OF MRS. SUSAN H. PAGE.

Ten shares in Capital Stock of American Screw Co. (on deposit) . . . . .		\$1,000 00
By cash paid General Expense account . . . . .	20 00	
" " " Foreign Missions . . . . .	10 00	
" " " Domestic Missions . . . . .	10 00	40 00
		<u>\$1,040 00</u>

## "UNITED OFFERING" FOR 1904.

By cash in Home Savings Bank, Boston . . . . .	\$1,000 00	
" " " Brookline National Bank . . . . .	98 38	
	<u>\$1,098 38</u>	

FANNY MACOMBER,

*General Treasurer.*

Dr. CAROLINE F. WOODS, *Treasurer of Domestic Division, in  
account with the Mass. Branch of the Woman's Auxiliary.* Cr.

September, 1902, Cash on hand . . . . .		\$49 50
Andover.—Christ Church, salaries of women in Alaska . . . . .	\$5 00	
Dr. Drigg's Chapel and Mission house . . . . .	5 00	
For Porto Rico . . . . .	2 50	12 50
Arlington.—St. John's Church, Church Periodical Club . . . . .	2 00	
Domestic pledges . . . . .	3 00	5 00
Auburndale.—Church of the Messiah, Waynesville, N. C. . . . .	2 00	2 00
Beverly.—St. Peter's Church, for Milford, N. H. . . . .	3 00	3 00
Boston.—Church of the Advent, Bishop Van Buren's work . . . . .	10 00	
St Margaret's School, Boisé . . . . .	42 00	
Bishop Mann's work . . . . .	5 00	
Bishop Leonard's work . . . . .	5 00	62 00
" Church of the Ascension, for Miss Carter's salary . . . . .	5 00	
" "Sunshine Club" for Hospital in Alaska . . . . .	2 00	7 00
" Church of the Good Shepherd, Church Periodical Club . . . . .	3 20	3 20
" Emmanuel Church, Domestic pledges . . . . .	25 00	
For Bishop Van Buren . . . . .	5 00	
Member, for Stoneville, N. C. . . . .	1 00	
" "Shoes for Alaska . . . . .	2 00	
" "Kansas City . . . . .	3 00	
" "Domestic pledges . . . . .	177 00	
" "Work of Bishop Wells . . . . .	50 00	
" "St. Margaret's school, Boisé . . . . .	20 00	
" "Nurse in Alaska . . . . .	2 00	
Church Periodical Club . . . . .	34 35	
Member, for Bishop Rowe's house . . . . .	20 00	339 35
" Church of St. John the Evangelist, for Chapel in Florida . . . . .		150 00
" Church of the Messiah, Church Periodical Club . . . . .	3 00	3 00
" St. Stephen's Church, for Bishop of Honolulu . . . . .	1 00	1 00
" St. Paul's Church, Member, for Bishop of Colorado . . . . .	50 00	
St. Andrew's Hospital, N. Y. . . . .	5 00	
Domestic Missions . . . . .	5 00	
Members, for Church Periodical Club . . . . .	71 00	
St. Paul's Auxiliary, for Domestic pledges . . . . .	43 00	
" " " "St. Margaret's school, Boisé . . . . .	15 00	
" " " "Bishop Rowe . . . . .	12 00	
Sunday School, for "Newton" scholarship, Rowland Hall, Utah . . . . .	40 00	241 00
" Trinity Church, members, for Bishop Kinsolving . . . . .	120 00	
Member, for Bishop Van Buren . . . . .	5 00	
" "General Domestic Missions . . . . .	5 00	
Pledge to Bishop Rowe . . . . .	125 00	
Domestic Pledges . . . . .	25 00	
Pledges to Bishop Kinsolving . . . . .	75 00	
Towards salary of Miss Carter . . . . .	10 00	
S. S. "Trinity" Scholarship, Rowland Hall, Utah . . . . .	40 00	
Members, for Archdeacon Appleby . . . . .	50 00	
Amount carried forward; . . . . .	\$395 00	\$878 55

<i>Amount brought forward,</i>		\$395 00	\$878 55
Member, for Promoting Christianity among the			
Jews . . . . .	5 00		
Member, towards salary of Miss Carter . . . . .	5 00		
“ School for white people in Virginia . . . . .	5 00		
“ for the Philippines . . . . .	5 00		
“ “ poor whites in S. Florida . . . . .	10 00		
“ “ Church Periodical Club . . . . .	147 49		
Members, for Domestic Missions . . . . .	20 00		
Member, for Archdeacon Appleby . . . . .	150 00		
“ “ Bishop Funston . . . . .	100 00		
“ “ Clergy Relief Fund . . . . .	100 00		
“ Easter Gift . . . . .	100 00		
“ Grace Church Rectory, Chilcote, Mo. . . . .	10 00		
“ Good Samaritan Hospital, S. C. . . . .	10 00		
“ Wyoming Clergy Fund . . . . .	25 00		
“ Thank offering for salary of Miss			
Emberly . . . . .	50 00	1,197 49	
<i>Boston (South).</i> —Church of the Redeemer, for Pledges . . . . .	3 00		
“ “ “ Alaska . . . . .	3 05	6 05	
“ “ For Bishop Leonard . . . . .		1 00	
<i>Brookline.</i> —St. Paul's Church, Church Periodical Club . . . . .	5 00		
Miss Deane's Work in Alaska . . . . .	5 00		
Domestic pledges . . . . .	5 00	15 00	
<i>Charlestown.</i> —St. John's Church, Church Periodical Club . . . . .		1 00	
<i>Dedham.</i> —St. Paul's Church, Church Periodical Club . . . . .	5 00		
Domestic pledges . . . . .	4 00	9 00	
<i>Dorchester.</i> —St. Mary's Church, to Bishop Brent for a Nurse . . . . .	50 00		
For Rev. Mr. Spurr . . . . .	10 00		
“ West Virginia . . . . .	5 00	65 00	
“ All Saints' Church, Church Periodical Club . . . . .	2 00	2 00	
<i>Cambridge.</i> —Christ Church, Member, for Miss Carter's Hospital . . . . .	10 00		
“ “ “ Missionary in Kansas . . . . .	10 00		
Rev. J. H. Gibbons, Virginia . . . . .	2 50		
Memorial Free Bed, Helena, Montana . . . . .	360 00	382 50	
“ St. James's Church, Member, for Hospital, Orlan-			
do, Florida . . . . .	50 00		
Member, for Bishop Leonard's work, Utah . . . . .	10 00		
Archdeacon Houghson, S. C. . . . .	10 00		
Poor Whites in Circle City, Alaska . . . . .	5 00	75 00	
“ St. John's Memorial Church, Member, for the			
Philippines . . . . .	2 00		
Member, for Porto Rico . . . . .	2 00		
“ “ Alaska . . . . .	2 00		
“ “ Miss Carter's salary . . . . .	4 00		
Church Periodical Club . . . . .	7 00	17 00	
“ St. Peter's Church, Domestic pledges . . . . .		5 00	
<i>Chestnut Hill.</i> —Church of the Redeemer, Church Periodical Club . . . . .		1 00	
<i>Haverhill.</i> —Trinity Church, Church Periodical Club . . . . .		1 00	
<i>Hyde Park.</i> —Christ Church. “ “ . . . . .		2 00	
<i>Jamaica Plain.</i> —St. John's Church, Church Periodical Club . . . . .		7 00	
<i>Longwood.</i> —Church of Our Saviour, “ “ “ . . . . .		1 00	
<i>Lynn.</i> —St. Stephen's Church, “ “ “ . . . . .		4 29	
<i>Mattapan.</i> —Church of the Holy Spirit, Clergyman in Wellington, Ks. . . . .		5 00	
<i>Amount carried forward,</i>		\$2,615 88	

		<i>Amount brought forward,</i>	\$2,615 88
<i>Newburyport.</i> —St. Paul's Church, Members, for Bishop Van Buren . . . . .	502 00		
For Rev. Mr. Gordheard . . . . .	50 00		
Work of Bishop Van Buren . . . . .	50 00	602 00	
<i>New Bedford.</i> —St. James's Church, for Waynesville, N. C. . . . .		2 00	
" Grace Church, Church Periodical Club . . . . .	5 00		
Towards Miss Carter's salary . . . . .	5 00		
Domestic pledges . . . . .	15 00	25 00	
<i>Newton.</i> —Grace Church, Miss. Society, for Bishop Rowe . . . . .	10 00		
" " " Bishop Brewer . . . . .	10 00	20 00	
<i>Newton Centre.</i> —Trinity Church, Domestic pledges . . . . .	20 00	20 00	
<i>Newton Lower Falls,</i> St. Mary's Church, Domestic pledges . . . . .	5 00		
Church Periodical Club . . . . .	1 00	6 09	
<i>Newtonville.</i> —St. John's Church, for Alaska . . . . .		2 00	
<i>Salem.</i> —St. Peter's Church, for Domestic pledges . . . . .		25 00	
<i>Swampscott.</i> —Church of the Holy Name, for Hospital in Alaska . . . . .		1 00	
<i>Taunton.</i> —St. Thomas's Church, for Bishop Rowe . . . . .	18 00		
For Mr. Delanzy . . . . .	5 00		
" Church Periodical Club . . . . .	1 00	24 00	
<i>Watertown.</i> —Church of the Good Shepherd, for Miss Carter's salary . . . . .		3 92	
<i>Winchester.</i> —Church of the Epiphany, third-year pledge to Bishop Rowe . . . . .	10 00		
Church Periodical Club . . . . .	1 00		
For Clergyman in Florida . . . . .	1 00	12 00	
<i>Wellesley.</i> —St. Andrew's Church, Church Periodical Club . . . . .		1 00	
<i>West Roxbury.</i> —Emmanuel Church . . . . .		1 00	
<i>Wakefield.</i> —Emmanuel Church, for St. Margaret's School, Boisé . . . . .		2 00	
<i>Wood's Hole.</i> —Church of the Messiah, for Louisville . . . . .		5 00	
Members of the Auxiliary, for Bishop Van Buren . . . . .		12 00	
From friends, for Miss Carter's Hospital, Alaska . . . . .		250 00	
Interest on "Lucy Lee Chickering" fund, for work of Miss Carter . . . . .		40 00	
Massachusetts G. F. Society, for the work of Bishop Brent . . . . .		375 25	
From the Diocese, for Church Periodical Club . . . . .		44 00	
A friend, for salary of Miss Emberley . . . . .		20 00	
Interest on bequest of Mrs. S. H. Page, for Miss Carter's salary . . . . .		10 00	
			<u>\$4,179 05</u>

Cr.

1903. September 1.

Expended for Church Periodical Club . . . . .	351 33
Paid Miss J. C. Emery, Secretary, New York . . . . .	745 50
For work among the Jews . . . . .	5 00
Interest on bequest of Mrs. S. H. Page . . . . .	10 00
Memorial Free Bed, St. Peter's Hospital, Helena, Montana . . . . .	360 00
For Chapel and Hospital in Orlando, Florida . . . . .	200 00
For freight . . . . .	5 00
To Bishops and Missionaries . . . . .	2,451 85
	<u>\$4,128 68</u>
Cash on hand . . . . .	50 37
	<u>\$4,179 05</u>

CAROLINE F. WOODS,

*Treasurer.*

Audited and found correct.

E. JAMES LORING.

Dr. CAROLINE F. WOODS, *Treasurer of the Diocesan Missions, in account with the Massachusetts Branch of the Woman's Auxiliary.*

September, 1902, cash on hand . . . . .		\$2 42
Allston.—St. Luke's Church, Salary of Missionary . . . . .	2 00	
Andover.—Christ Church, Salary of Missionary . . . . .	5 00	
“ (North).—St. Paul's Church, Salary of Missionary . . . . .	2 00	
Attleboro'.—All Saints' Church, Salary of Missionary . . . . .	3 00	
Auburndale.—Church of the Messiah, Salary of Missionary . . . . .	3 00	
Arlington.—St. John's Church, Diocesan Missions . . . . .	2 00	
Belmont.—All Saints' Church, Salary of Missionary . . . . .	5 00	
Beverly.—St. Peter's Church, Salary of Missionary . . . . .	5 00	
Boston.—Church of the Advent, Salary of Missionary . . . . .	10 00	
“ St. Andrew's Church, Member, Salary of Missionary . . . . .	1 00	
“ Emmanuel Church, Member, Salary of Missionary . . . . .	\$5 00	
“ “ “ “ for Clergyman's family . . . . .	2 00	
“ “ “ “ for Rectory . . . . .	2 00	
“ “ “ “ Salary of Missionary and Rectory . . . . .	162 00	171 00
“ Church of the Good Shepherd, Miss. Soc., for Salary of Missionary . . . . .		3 00
“ St. Paul's Church, Member, for Church Home, South Boston . . . . .	5 00	
“ “ “ Dom. Miss. Soc., for Salary of Missionary . . . . .	8 00	
“ “ “ Auxiliary, for Salary of Missionary . . . . .	22 00	
“ “ “ “ “ “ and Diocesan Missions . . . . .	15 00	50 00
“ Church of the Messiah, for Salary of Missionary . . . . .		5 00
“ Trinity Church, Member, for Christmas cheer . . . . .	3 00	
“ “ “ Special, for Diocesan Missionary . . . . .	25 00	
“ “ “ Member, for Episcopal City Missions . . . . .	5 00	
“ “ “ “ “ family of Clergyman . . . . .	15 00	
“ “ “ “ “ House of Mercy . . . . .	15 00	
“ “ “ “ “ West End Hospital . . . . .	10 00	
“ “ “ “ “ Diocesan Missions . . . . .	125 00	
“ “ “ “ for Salary of Missionary . . . . .	100 00	298 00
“ (South).—St. Matthew's Church, Salary of Missionary . . . . .		5 00
Brookline.—St. Paul's Church, for Salary of Missionary . . . . .		5 00
Cambridge.—Christ Church, Episcopal City Missions . . . . .	15 00	
“ “ “ Salary of Missionary . . . . .	20 00	35 00
“ St. James's Church, Salary of Missionary . . . . .	10 00	
“ “ “ “ for family of Clergyman . . . . .	5 00	15 00
“ St. John's Memorial Church, Salary of Missionary . . . . .	10 00	
“ “ “ “ family of Clergyman . . . . .	1 00	
“ “ “ “ for Rectory . . . . .	1 00	12 00
“ St. Peter's Church, Diocesan Missions . . . . .		5 00
Amount carried forward,		\$644 42

	<i>Amount brought forward,</i>	\$644 42
<i>Charlestown.</i> —St. John's Church, Member, Salary of Missionary		2 00
<i>Danvers.</i> —Calvary Church, Salary of Missionary . . . .		5 00
<i>Dedham.</i> —St. Paul's Church, " " " . . . .		2 00
<i>Dorchester.</i> —St. Mary's Church, for family of Clergyman . .		50
" St. Mark's Church, Salary of Missionary . . . .		1 00
<i>Haverhill.</i> —Trinity Church, Salary of Missionary . . . .		5 00
<i>Jamaica Plain.</i> —St. John's Church, Salary of Missionary . .		5 00
<i>Longwood</i> —Church of Our Saviour, Salary of Missionary . .		18 50
<i>Lynn.</i> —St. Stephen's Church, Salary of Missionary . . . .		28 00
<i>Medford.</i> —Grace Church, Salary of Missionary . . . .		5 00
<i>Melrose</i> —Trinity Church, Salary of Missionary . . . .		15 00
<i>Milton.</i> —St. Michael's Church, Diocesan Missions . . . .		8 35
<i>New Bedford.</i> —St. Martin's Church, Salary of Missionary . .		5 00
" " Grace Church, Salary of Missionary . . . .		15 00
<i>Newton Centre.</i> —Trinity Church, Salary of Missionary . . .		5 00
<i>Newburyport</i> —St. Paul's Church, Salary of Missionary . . .		10 00
<i>Plymouth.</i> —Christ Church, Salary of Missionary . . . .		3 00
<i>Roxbury.</i> —St. James's Church, Salary of Missionary . . . .		2 00
" St. John's Church, for Foxboro' Christmas tree . . . .		50
<i>Salem.</i> —St. Peter's Church, Salary of Missionary . . . .		15 00
" Grace Church, Salary of Missionary . . . .		5 00
<i>Southboro'.</i> —St. Mark's Church, Salary of Missionary . . . .		5 00
<i>Taunton.</i> —St. Thomas's Church, Diocesan Missions . . . .		26 00
<i>Wakefield.</i> —Emmanuel Church, Salary of Missionary . . . .		2 00
<i>Watertown.</i> —Church of the Good Shepherd, Salary of Missionary		2 00
<i>Wollaston.</i> —St. Chrysostom's Church . . . .		2 00
<i>Woods Holl.</i> —Church of the Messiah, Salary of Missionary . .		5 00
Friend, for family of Clergyman . . . .		2 00
Members of the Auxiliary, for new Sailors' Haven, Charlestown		12 00
	Total,	\$856 27

**Cr.**

Expended for House of Mercy . . . . .	\$15 00
" " West End Nursery . . . . .	10 00
" " Episcopal City Missions . . . . .	20 00
" " Church Home, South Boston . . . . .	5 00
" " New Sailors' Haven, Charlestown . . . . .	12 00
Salary of Diocesan Missionary, Miss King . . . . .	540 00
Special for Miss King . . . . .	25 00
To Clergymen and Missions . . . . .	204 00

\$831 00

Cash on hand . . . . . 25 27 \$856 27

CAROLINE F. WOODS,

*Treasurer.*

Audited and found correct,

E. JAMES LORING.

Dr. HARRIET E. CARYL, *Treasurer of the Dakota League, in account with the Massachusetts Branch of the Woman's Auxiliary to the Board of Missions.*

1902.		
September 1, on hand . . . . .		\$62 91
Amounts received from—		
Andover.—Christ Church, for Bishop Hare's work . . . .		5 00
Boston.—Church of the Advent, for Bishop Leonard . . .	\$5 00	
“ “ “ “ “ Bishop Funston . . . .	20 00	
“ “ “ “ “ Lemlie Indians . . . .	42 00	67 00
“ Church of the Good Shepherd, for Rev. Mr. Ashley . .		12 00
“ Church of the Messiah, for Rev. D. P. Okerhater . . .	14 50	
“ “ “ “ “ “Grace H. Hamlen”		
“ “ “ “ “ Scholarship . . . .	2 00	
“ “ “ “ “ Rev. Mr. Ashley . . . .	6 00	
“ “ “ “ “ Catechists . . . .	10 00	32 50
“ Emmanuel Church, for Lemlie Indians . . . .	1 00	
“ “ “ “ “ Miss Sabine's Salary . . . .	2 00	
“ “ “ “ “ Miss Carter's Lace School . . . .	20 00	
“ “ “ “ “ “Grace H. Hamlen” Scholar-		
“ “ “ “ “ ship . . . .	22 00	
“ “ “ “ “ General Work . . . .	31 00	
“ “ “ “ “ Miss Woods, Circle City . . . .	40 00	116 00
“ St. Paul's Church, for Bishop Leonard . . . .	5 00	
“ “ “ “ “ Catechists . . . .	10 00	
“ “ “ “ “ (Sunday School and friends), for		
“ “ “ “ “ Scholarship . . . .	60 00	75 00
“ St. Stephen's Church, for Rev. Mr. Ashley . . . .	5 00	
“ “ “ “ “ Miss Carter's work . . . .	10 00	
“ “ “ “ “ Miss Sabine's Salary . . . .	25 00	40 00
“ Trinity Church, for Bishop Hare's work . . . .	2 00	
“ “ “ “ “ “ 30th Anniversary . . . .	2 00	
“ “ “ “ “ Christmas Box, Circle City . . . .	2 00	
“ “ “ “ “ Miss Carter's Lace School . . . .	20 00	
“ “ “ “ “ “Grace H. Hamlen” Scholarship . . . .	21 50	
“ “ “ “ “ Miss Sabine's Salary . . . .	49 50	
“ “ “ “ “ Bishop Funston . . . .	50 00	
“ “ “ “ “ Bishop Gray . . . .	50 00	
“ “ “ “ “ Mrs. Evans's Salary . . . .	73 00	
“ “ “ “ “ Miss Thackara's Hospital . . . .	75 00	
“ “ “ “ “ Bishop Brooke . . . .	100 00	
“ “ “ “ “ Bishop Leonard . . . .	100 00	
“ “ “ “ “ five Scholarships (\$60.00 each) . . . .	300 00	
“ “ “ “ “ one Scholarship . . . .	70 00	915 00
“ (South).—Church of the Redeemer, for Oneida nurse . .		1 00
“ (Dorchester).—Church of All Saints, for Miss Sabine's		
“ “ “ “ “ Salary . . . .		3 00
“ (Roxbury).—St. James's Church, for Miss Sabine's Salary		5 00
Amount carried forward,		\$1,334 41

		<i>Amount brought forward,</i>	\$1,334 41
<i>Brookline.</i> —St. Paul's Church, for Oneida nurse			5 00
<i>Cambridge.</i> —Christ Church, for Christmas boxes, Circle City	2 00		
" " " " " " Grace H. Hamlen " Scholarship	5 00		
" " " " " " Oneida nurse	19 00	26 00	
" St. James's Church, for Christmas boxes, Circle City	3 00		
" " " " " " Catechists	5 00		
" " " " " " Miss Woods's Salary	5 00	13 00	
" St John's Memorial Chapel, for Lemlie Indians	1 00		
" " " " " " Christmas boxes, Circle City	1 00		
" " " " " " Bishop Hare's 30th Anniversary	1 00		
" " " " " " general Missions	9 00		
" " " " " " " George Zabriskie Gray " Sch'p	60 00	72 00	
" St. Peter's Church, for Lemlie Indians		2 00	
" St. Philip's Church, for Mrs. Evans's Salary		2 00	
<i>Chestnut Hill.</i> —Church of the Redeemer, for Rev. F. W. Merrill		11 00	
<i>Dedham.</i> —St. Paul's Church, for " Grace H. Hamlen " Sch'p	2 50		
" " " " " " St. Mary's School	22 50	25 00	
<i>Hanover.</i> —St. Andrew's Church, for freight		1 00	
<i>Hopkinton.</i> —St. Paul's Church, for Miss Sabine's Salary		2 00	
<i>Longwood.</i> —Church of Our Saviour, for Bishop Hare's 30th Anniversary	2 00		
" " " " " " Christmas boxes, Circle City	5 00		
" " " " " " Oneida nurse	25 50	32 00	
<i>New Bedford.</i> —Grace Church, for Catechists		10 00	
<i>Newburyport.</i> —St. Paul's Church, for " Bishop Bass " Scholarship		60 00	
<i>Newton.</i> —Grace Church, for Bishop Hare		10 00	
<i>Salem.</i> —St. Peter's Church, for Miss Sabine's Salary		10 00	
<i>Taunton.</i> —St. Thomas's Church, for general Missions		10 00	
<i>Wakefield.</i> —Emmanuel Church, for Miss Sabine's Salary		2 00	
<i>Watertown.</i> —Church of the Good Shepherd, for general Missions		3 26	
" A Friend," for general Missions		2 50	
			<hr/> \$1,633 17

Cr.

1903.

September 1.

Cash sent directly to New York	\$1,241 00	
" " " " Missionaries	336 00	
" " for Bishop Hare's 30th Anniversary	5 00	
" expended for freight, postage, etc.	2 82	\$1,584 82
Cash on hand		48 35
		<hr/> \$1,633 17

HARRIET E. CARYL,

*Treasurer.*

Audited and found correct.

E. JAMES LORING.

Dr. HARRIET E. CARYL, *Treasurer of the Colored People's Branch,  
in account with the Massachusetts Branch of the Woman's Auxiliary  
to the Board of Missions.*

1902.		
September 1, on hand . . . . .		\$124 00
Amounts received from—		
Andover.—Christ Church, for Miss Wheeler's Salary . . .	\$10 00	
“ “ “ “ Archdeacon Russell . . .	5 00	15 00
Arlington.—St. John's Church, for Leonora Jones . . .	1 00	
“ “ “ “ Rev. Mr. Deal . . .	3 00	4 00
Ayer and Groton.—St. Andrew's Church, for Miss Wheeler's Salary . . . . .		2 00
Beverly.—St. Stephen's Church, for Archdeacon Joyner . .		5 00
Boston.—Church of the Ascension (Sunshine Club), for Rev. Mr. Deal . . . . .		2 00
“ Church of the Advent, for Miss Wheeler's Salary . .	3 00	
“ “ “ “ Archdeacon Russell . . .	35 00	38 00
“ Church of the Messiah, for Archdeacon Joyner . . .	5 00	
“ “ “ “ Miss Wheeler's Salary . . .	5 00	10 00
“ Emmanuel Church, for Leonora Jones . . .	2 00	
“ “ “ “ Miss Wheeler's Salary . . .	12 44	
“ “ “ “ general Missions . . .	113 29	127 73
“ St. Augustine's Church, for Miss Wheeler's Salary . .		3 00
“ St. Paul's Church, for St. Augustine's School . . .	5 00	
“ “ “ “ Archdeacon Russell . . .	5 00	
“ “ “ “ general Missions . . .	5 00	
“ “ “ “ Miss Wheeler's Salary . . .	9 00	24 00
“ St. Stephen's Church, for Rev. Mr. Deal . . .	1 00	
“ “ “ “ Miss Wheeler's Salary . . .	15 00	16 00
“ Trinity Church, for Leonora Jones . . .	1 00	
“ “ “ “ Rev. Mr. Greetham . . .	2 00	
“ “ “ “ St. Agnes Hospital . . .	5 00	
“ “ “ “ “Annie Anthony” Scholarship . . .	5 00	
“ “ “ “ Miss Wheeler's Salary . . .	5 00	
“ “ “ “ Archdeacon Joyner . . .	15 00	
“ “ “ “ Mobile Mission . . .	35 00	
“ “ “ “ Archdeacon Russell . . .	125 00	
“ “ “ “ (Sunday School), for Scholarship in St. Augustine's School . . .	70.00	263 00
“ (Allston).—St. Luke's Church, for Archdeacon Joyner .		5 00
“ (Dorchester).—Church of All Saints, for Miss Wheeler's Salary . . . . .		2 00
“ “ St. Mary's Church, for Miss Wheeler's Salary . . . . .	5 00	
“ “ “ “ “ Bishop Nelson . . .	5 00	
“ “ “ “ “ Rev. Mr. Paris . . .	5 00	15 00
“ “ St. Mark's Church, for Leonora Jones . . .		1 00
“ (Jamaica Plain).—St. John's Church, for Archdeacon Joyner . . . . .		25 00
Amount carried forward,		\$681 73

<i>Amount brought forward,</i>				\$681 73
<i>Boston (Roxbury).</i>	—St. James's Church, for Leonora Jones .	\$1 00		
"	" " " " Bishop Nelson .	5 00	6 00	
"	" " St. John's Church, for Miss Wheeler's Salary		2 00	
"	( <i>South</i> ).—St. Matthew's Church, for Rev. Mr. Deal .		3 00	
"	" " Church of the Redeemer, for Archdeacon Russell		1 00	
<i>Bridgewater.</i>	—Trinity Church, for Miss Wheeler's Salary .	2 50		
"	" " " " Bishop Nelson .	5 00	7 50	
<i>Brookline.</i>	—St. Paul's Church, for Miss Wheeler's Salary .	5 00		
"	" " " " Atlanta Scholarship .	5 00	10 00	
<i>Cambridge.</i>	—Christ Church, for Miss Wheeler's Salary .	1 00		
"	" " " " Archdeacon Joyner .	5 00		
"	" " " " Mrs. Buford's work .	15 00	21 00	
"	" " St. James's Church, for Rev. Mr. Deal .	2 00		
"	" " " " " Miss Wheeler's Salary .	5 00		
"	" " " " " Archdeacon Joyner .	5 00		
"	" " " " " Archdeacon Russell .	5 00		
"	" " " " " general Missions .	5 00		
"	" " " " " St. Augustine's School .	10 00	32 00	
"	" " St. John's Memorial Chapel, for Archdeacon Russell	3 00		
"	" " " " " " Miss Wheeler's Salary .	10 00	13 00	
"	" " St. Peter's Church, for Archdeacon Russell .	3 00		
"	" " " " " " Miss Wheeler's Salary .	6 00	9 00	
"	" " St. Philip's Church, for Archdeacon Russell .		8 00	
<i>Concord.</i>	—Trinity Church, for Lenora Jones .		1 00	
<i>Dedham.</i>	—St. Paul's Church, for Miss Wheeler's Salary .		2 50	
<i>Duxbury.</i>	—Church of St. John the Evangelist, for Miss Wheeler's Salary .		1 00	
<i>Fall River.</i>	—Church of the Ascension, for Miss Wheeler's Salary		2 00	
"	" " St. John's Church, for Miss Wheeler's Salary .		2 00	
"	" " St. James's Church, for Rev. Mr. Deal .	2 00		
"	" " " " " Archdeacon Joyner .	5 00	7 00	
<i>Framingham.</i>	—St. John's Church, for Miss Wheeler's Salary		3 00	
<i>Hopkinton.</i>	—St. Paul's Church, for Miss Wheeler's Salary .		2 00	
<i>Hyde Park.</i>	—Christ Church, for Miss Wheeler's Salary .		5 00	
<i>Linden.</i>	—St. Luke's Church (Girls' Friendly Society), for Archdeacon Russell		1 00	
<i>Longwood.</i>	—Church of Our Saviour, for Miss Wheeler's Salary	4 00		
"	" " " " " Bishop Nelson .	5 00		
"	" " " " " Archdeacon Joyner .	5 00		
"	" " " " " freight .	5 00		
"	" " " " " general Missions .	18 00	37 00	
<i>Lynn.</i>	—St. Stephen's Church, for Leonora Jones .	1 00		
"	" " " " " Miss Wheeler's Salary .	5 00		
"	" " " " " Archdeacon Joyner .	5 00	11 00	
<i>Medford.</i>	—Grace Church, for Miss Wheeler's Salary .		2 00	
<i>Melrose.</i>	—Trinity Church, for Leonora Jones .	1 00		
"	" " " " " Miss Wheeler's Salary .	3 00	4 00	
<i>New Bedford.</i>	—Grace Church, for Miss Wheeler's Salary .	5 00		
"	" " " " " Bishop Nelson .	10 00	15 00	
"	" " St. Martin's Church (Sunday School Class), for Archdeacon Joyner .		5 00	
<i>Amount carried forward,</i>				\$894 73

	<i>Amount brought forward,</i>	\$894 73
<i>Newburyport.</i> —St. Paul's Church, for St. Augustine's School . . .		26 00
<i>Newton.</i> —Grace Church, for Miss Wheeler's Salary . . .		5 00
“ (Centre).—Trinity Church, for Leonora Jones . . .		1 00
“ (Lower Falls).—St. Mary's Church, for Miss Wheeler's Salary . . .		10 00
<i>Salem.</i> —St. Peter's Church, for Archdeacon Russell . . .	\$10 00	
“ “ “ “ Archdeacon Joyner . . .	15 00	25 00
<i>Southborough.</i> —St. Mark's Church, for Archdeacon Joyner . . .	5 00	
“ “ “ “ Miss Wheeler's Salary . . .	5 00	10 00
<i>Taunton.</i> —St. Thomas's Church, for Leonora Jones . . .	1 00	
“ “ “ “ Kindergarten, St. Augustine's . . .	2 00	
“ “ “ “ Miss Wheeler's Salary . . .	10 00	13 00
<i>Wakefield.</i> —Emmanuel Church, for Leonora Jones . . .	1 00	
“ “ “ “ Miss Wheeler's Salary . . .	3 00	4 00
<i>Watertown.</i> —Church of the Good Shepherd, for general Missions . . .	1 15	
“ “ “ “ “ Miss Wheeler's Salary . . .	2 00	3 15
<i>Wellesley.</i> —St. Andrew's Church, for Rev. Mr. Deal . . .		4 00
<i>Wollaston.</i> —St. Chrysostom's Church, for Miss Wheeler's Salary . . .		2 00
<i>Woods Holl.</i> —Church of the Messiah, for Miss Wheeler's Salary . . .		5 00
Friend, for Leonora Jones . . .	1 00	
“ “ freight . . .	1 75	
“ “ general Missions . . .	2 50	
“ “ Rev. Mr. Deal . . .	6 00	11 25
		<u>\$1,014 13</u>

**Cr.**

September 1, 1903.

Cash sent direct to Missionaries . . . . .	\$765 75	
“ “ “ “ Miss Julia C. Emery . . . . .	220 00	
“ expended for freight, postage, etc. . . . .	8 88	994 63
Cash on hand to balance . . . . .		19 50
		<u>\$1,014 13</u>

HARRIET E. CARYL,  
*Treasurer.*

Audited and found correct.

E. JAMES LORING.

Dr. JENNY M. HOOPER, *Treasurer of Foreign Division, in account with the Massachusetts Branch of the Woman's Auxiliary.*

<i>Andover.</i> —Christ Church.			
	Miss Woodruff's salary . . . . .	\$5 00	
	Miss Wall's salary . . . . .	5 00	
	Miss Dodson . . . . .	5 00	\$15 00
<i>Attleboro.</i> —All Saints' Church.			
	Miss Woodruff's salary . . . . .		3 00
<i>Arlington.</i> —St. John's Church.			
	Miss Woodruff's salary . . . . .	5 00	
	Loving Friends' Crib . . . . .	2 00	7 00
<i>Allston.</i> —St. Luke's Church.			
	Miss Woodruff's salary . . . . .		1 00
<i>Auburndale.</i> —Church of the Messiah.			
	Miss Woodruff's salary . . . . .		2 00
<i>Boston.</i> —Church of the Advent.			
	Miss Woodruff's salary . . . . .		25 00
" Emmanuel Church.			
	Insurance dues for three missionaries . . . . .	150 00	
	Sarah T. Hoyt scholarship . . . . .	50 00	
	Miss Dodson's Orphanage . . . . .	2 00	202 00
" Church of the Good Shepherd.			
	Spring Hill Mines, Nova Scotia . . . . .	10 00	
	Bishop Schereschewsky . . . . .	2 00	
	Miss Woodruff's salary . . . . .	3 00	15 00
" Church of the Messiah.			
	Miss Woodruff's salary . . . . .		2 00
" St. Paul's Church.			
	Miss Woodruff's salary . . . . .	20 00	
	Loving Friends' Crib . . . . .	5 00	
	Bishop Paddock Scholarship . . . . .	45 00	
	Christina Crib . . . . .	30 00	100 00
" Trinity Church.			
	Miss Wall's salary . . . . .	225 00	
	Miss Woodruff's salary . . . . .	27 00	
	General Missions . . . . .	5 00	
	Loving Friends' Crib . . . . .	2 00	
	Spring Hill Mines Hospital . . . . .	25 00	
	Bed in Eliz. Bunn Hospital . . . . .	30 00	
	Christian Renton Loring Scholarship . . . . .	50 00	
	Frances A. Caryl Scholarship . . . . .	25 00	389 00
<i>South Boston.</i> —St. Matthew's Church.			
	Miss Woodruff's salary . . . . .		3 00
" Church of the Redeemer.			
	Miss Woodruff's salary . . . . .		7 00
<i>Boston (Dorchester).</i> —All Saints' Church.			
	Miss Dodson . . . . .		3 50
" ( <i>Roxbury</i> ).—St. John's Church.			
	Miss Woodruff's salary . . . . .		2 00
<i>Amount carried forward,</i>			<u>\$776 50</u>

		<i>Amount brought forward,</i>	\$776 50
<i>Boston (Roxbury).</i>	—St. James's Church.		
	Miss Woodruff's salary . . . . .		5 00
<i>Belmont.</i>	—All Saints' Church.		
	Miss Woodruff's salary . . . . .		3 00
<i>Beverly.</i>	—St. Peter's Church.		
	General Missions . . . . .		5 00
<i>Bridgewater.</i>	—Trinity Church.		
	Mr. Tyng's insurance . . . . .		5 00
<i>Brookline.</i>	—All Saints' Church.		
	St. Agnes School, Kyoto . . . . .	\$ 5 00	
	Miss Woodruff's salary . . . . .	25 00	30 00
"	St. Paul's Church.		
	Orphanage Building, Shanghai . . . . .	20 00	
	Miss Woodruff's salary . . . . .	5 00	25 00
<i>Brockton.</i>	—St. Paul's Church.		
	Miss Woodruff's salary . . . . .		2 00
<i>Cambridge.</i>	—St. John's Memorial Church.		
	Mr. Tyng's insurance . . . . .	12 50	
	Cuba . . . . .	2 00	
	Miss Woodruff's salary . . . . .	31 00	
	Sarah F. Hoyt Scholarship . . . . .	50 00	95 50
"	St. James's Church.		
	Miss Woodruff's salary . . . . .	8 00	
	Mr. McGee's work in Havana . . . . .	10 00	
	Mr. Tyng's insurance . . . . .	12 50	
	Miss Wall's salary . . . . .	5 00	
	St. Mary's Orphanage, Shanghai . . . . .	3 00	38 50
"	St. Peter's Church.		
	Miss Woodruff's salary . . . . .		4 00
"	Christ Church.		
	Mr. Tyng's insurance . . . . .	12 50	
	Miss Woodruff's salary . . . . .	3 00	
	Dr. Grenfeld . . . . .	50 00	65 50
"	St. Philip's Church.		
	Mr. Tyng's insurance . . . . .	6 25	
	Spring Hill Mines, Nova Scotia . . . . .	6 00	
	Miss Dodson . . . . .	5 00	17 25
"	St. Bartholemew's Church.		
	Spring Hill Mines, Nova Scotia . . . . .		55 00
<i>Canton.</i>	—Trinity Church.		
	Miss Woodruff's salary . . . . .		1 00
<i>Concord.</i>	—Trinity Church.		
	Loving Friends' Crib . . . . .		2 00
<i>Dedham.</i>	—St. Paul's Church.		
	Miss Woodruff's salary . . . . .		4 00
<i>Fall River.</i>	—St. Luke's Church.		
	Miss Woodruff's salary . . . . .		5 00
"	Ascension Church.		
	Miss Woodruff's salary . . . . .		5 00
"	St. John's Church.		
	Rev. Mr. Roots, Hankow, China . . . . .		10 00
		<i>Amount carried forward,</i>	\$1,154 25

	<i>Amount brought forward,</i>	\$1,154 25
<i>Fall River.</i> —St. James's Church.		
Loving Friends' Crib . . . . .		5 00
<i>Haverhill.</i> —Trinity Church.		
Miss Woodruff's salary . . . . .		5 00
<i>Hyde Park.</i> —Christ Church.		
Miss Woodruff's salary . . . . .		3 00
<i>Ipswich.</i> —Ascension Church.		
Miss Woodruff's salary . . . . .		3 00
<i>Lynn.</i> —St. Stephen's Church.		
Miss Woodruff's salary . . . . .		36 00
<i>Longwood.</i> —Church of Our Saviour.		
Miss Woodruff's salary . . . . .	\$69 00	
St. Mary's Orphanage, Shanghai . . . . .	20 00	89 00
<i>Lowell.</i> —St. Anne's Church.		
St. Anne's Scholarship . . . . .		40 00
<i>Melrose.</i> —Trinity Church.		
Miss Woodruff's salary . . . . .		4 00
<i>Medford.</i> —Grace Church.		
Miss Woodruff's salary . . . . .		2 00
<i>Marblehead.</i> —St. Michael's Church.		
Miss Woodruff's salary . . . . .		5 00
<i>Natick.</i> —St. Paul's Church.		
Miss Woodruff's salary . . . . .		1 00
<i>North Andover.</i> —St. Paul's Church.		
St. Mary's Hall, Shanghai . . . . .		1 00
<i>Newton.</i> —Grace Church.		
Newton Wentworth Scholarship . . . . .	15 00	
Mr. Tyng's insurance . . . . .	1 25	16 25
<i>Newton Centre.</i> —Trinity Church.		
Miss Woodruff's salary . . . . .		5 00
<i>Newton Highlands.</i> —St. Paul's Church.		
Miss Woodruff's salary . . . . .	2 00	
St. Mary's Orphanage, Shanghai . . . . .	5 00	7 00
<i>Newton Lower Falls.</i> —St. Mary's Church.		
Miss Woodruff's salary . . . . .		10 00
<i>New Bedford.</i> —Grace Church.		
Miss Woodruff's salary . . . . .	25 00	
Miss Wall's salary . . . . .	10 00	35 00
" St. James's Church.		
Miss Wall's salary . . . . .		5 00
" St. Martin's Church.		
Miss Woodruff's salary . . . . .		2 00
<i>Salem.</i> —St. Peter's Church.		
Miss Woodruff's salary . . . . .		15 00
<i>Sandwich.</i> —St. John's Church.		
Miss Woodruff's salary . . . . .		2 00
<i>Taunton.</i> —St. Thomas's Church.		
Miss Woodruff's salary . . . . .		20 00
<i>Wakefield.</i> —Emmanuel Church.		
Miss Woodruff's salary . . . . .		2 00
<i>Wellesley.</i> —St. Andrew's Church.		
Miss Woodruff's salary . . . . .		2 00
	<i>Amount carried forward,</i>	\$1,469 50

<i>Amount brought forward,</i>		\$1,469 50
<i>West Roxbury.—Emmanuel Church.</i>		
Helen Rhett Pearson Scholarship . . . . .		14 50
<i>Wollaston.—St. Chrysostom's Church.</i>		
Miss Woodruff's salary . . . . .		3 50
Collection at meeting for Bishop Partridge, Japan . . . . .		43 88
Interest on Bishop Brooks Fund . . . . .		35 30
Interest on Susan H. Page Bequest . . . . .		10 00
"Friend," for scholarship in Holy Trinity Orphanage, Tokyo . . . . .		30 00
"Friend," for Spring Hill Mines, Nova Scotia . . . . .		5 00
Support of a Bible Woman in China, a Memorial to Mrs. Wilson by the Massachusetts Branch of the Woman's Auxiliary . . . . .		318 11
Total . . . . .		\$1,929 79

**Ct.**

Cash sent to Miss J. C. Emery, New York . . . . .	\$1,433 80
Cash sent to Miss Emery for Junior Auxiliary . . . . .	11 00
Cash reported as sent direct to New York or to missionaries . . . . .	166 00
Cash given to Bishop Partridge at meeting . . . . .	43 88
Balance in Savings Fund . . . . .	275 11
	\$1,929 79

Audited and found correct.

E. JAMES LORING.

Dr. SUSAN B. HOWE, *Treasurer, in account with the Massachusetts Branch of the Woman's Auxiliary.*

MEXICO.

Balance on hand Sept. 1, 1902 . . . . .	\$ 5 00	
Andover.—Christ Church . . . . .	2 50	
Arlington.—St. John's Church . . . . .	5 00	
Boston.—Church of the Advent . . . . .	10 00	
“ Emmanuel Church . . . . .	50 00	
“ Church of the Good Shepherd . . . . .	2 00	
“ St. Paul's Church . . . . .	7 00	
“ Trinity Church . . . . .	142 00	
South Boston.—St. Matthew's Church . . . . .	3 00	
Cambridge.—St. James's Church . . . . .	90 00	
“ St. John's Memorial Chapel . . . . .	9 00	
Dedham.—St. Paul's Church . . . . .	2 00	
Fall River.—Church of the Ascension . . . . .	5 00	
Longwood.—Church of Our Saviour . . . . .	49 00	
Lynn.—St. Stephen's Church . . . . .	16 00	
New Bedford.—A Friend . . . . .	5 00	
“ Grace Church . . . . .	5 00	
Salem.—St. Peter's Church . . . . .	5 00	
Wakefield.—Emmanuel Church . . . . .	1 00	
		\$413 50

Cr.

Sent Mr. George C. Thomas, Treasurer . . . . .	\$223 50	
Sent direct to Mr. Forrester . . . . .	100 00	
Paid directly to Mr. Forrester by Mrs. Edward Abbott . . . . .	10 00	
Sent direct to Mr. Forrester . . . . .	80 00	
		\$413 50

SUSAN B. HOWE,  
*Treasurer.*

Audited and found correct.

E. JAMES LORING.

BRAZIL.

Andover.—Christ Church . . . . .	\$ 5 00	
Arlington.—St. John's Church . . . . .	5 00	
Boston.—Emmanuel Church . . . . .	4 00	
“ Church of the Messiah . . . . .	5 00	
“ St. Paul's Church . . . . .	17 00	
“ Trinity Church . . . . .	2 00	
Cambridge.—Christ Church . . . . .	5 00	
“ St. John's Memorial Chapel . . . . .	2 00	
Fall River.—Church of the Ascension . . . . .	5 00	
Wakefield.—Emmanuel Church . . . . .	1 00	
		\$51 00
Sent to Mr. George C. Thomas, Treasurer . . . . .		\$51 00

SUSAN B. HOWE,  
*Treasurer.*

Audited and found correct.

E. JAMES LORING.

## HAITI.

<i>Boston.</i> —Emmanuel Church . . . . .	\$ 5 00	
“ St. Paul’s Church . . . . .	6 00	
<i>South Boston.</i> —St. Matthew’s Church . . . . .	3 00	
<i>Cambridge.</i> —St. James’s Church . . . . .	10 00	
“ St. John’s Memorial Chapel . . . . .	2 00	
<i>Dedham.</i> —St. Paul’s Church . . . . .	2 00	
<i>Salem.</i> —St. Peter’s Church . . . . .	5 00	
	<hr/>	\$33 00
Sent to Mr. George C. Thomas, Treasurer . . . . .	\$23 00	
Sent direct to Bishop Holly by Mrs. Ellen C. Metcalf	10 00	
	<hr/>	\$33 00

SUSAN B. HOWE,  
*Treasurer.*

Audited and found correct.

E. JAMES LORING.

## LIST OF SCHOLARSHIPS AND ANNUAL PLEDGES.

### DOMESTIC DIVISION.

Name of Scholarship.	Supported by
	\$40.00.
"TRINITY." Rowland Hall, Utah.	Sunday School, Trinity Church, Boston.
	\$40.00.
"NEWTON." Rowland Hall, Utah.	Sunday School, St. Paul's Church, Boston.
	FREE BED.
	Endowed, \$3,000.
"LUCY LEE CHICKERING."	In the Fannie C. Paddock Memorial Hospital, Diocese of Washington.

### INDIAN AND COLORED PEOPLE'S DIVISION.

\$60.00 each.

	St. JOHN'S SCHOOL (Girls), <i>Cheyenne River Agency</i> .
"TRINITY."	Sunday School, Trinity Church, Boston.
"CORA LYMAN" (in memoriam).	Member of Trinity Church, Boston.
"SWANNANOA."	" " " " " "
"GEORGE ZABRISKIE GRAY."	St. John's Memorial Chapel, Cambridge.
"JOSEPH W. WOODS."	Sunday School, St. Paul's Church, Boston, and others.
	St. MARY'S SCHOOL (Boys and Girls), <i>Rosebud Agency, So. Dakota</i> .
"TRINITY BIBLE CLASS."	Young Women's Bible Class, Trinity Church, Boston.
"HENRY HERBERT SMYTHE."	Member of Trinity Church, Boston.
"GRACE H. HAMLIN MEMORIAL."	Members of Dakota League and other friends,
"FRANCES L. FISKE MEMORIAL."	Miss Elizabeth S. Fiske, Trinity Ch., Boston.
	St. ELIZABETH SCHOOL, <i>Standing Rock Agency, So. Dakota</i> .
"BISHOP BASS."	St. Paul's Church, Newburyport.
	\$70.00 each.
INDIAN SCHOLARSHIP, HAMPTON, VA.	Sunday School, Trinity Church, Boston.
SCHOLARSHIP IN ST. AUGUSTINE'S	} " " " " "
NORMAL SCHOOL, RALEIGH, N. C.	

\$25.00 each.

#### St. PAUL'S SCHOOL, *Lawrenceville, Va.*

THREE SCHOLARSHIPS.	By small sums from several parishes.
ONE SCHOLARSHIP.	Member Church of the Advent, Boston.
" "	Emmanuel Church, Boston.
" "	By twenty-five Societies of young girls.

## ST. AUGUSTINE'S SCHOOL.

"MARY J. WOAST MEMORIAL." St. Paul's Church, Newburyport.

\$5.00 each.

"ANNIE ANTHONY MEMORIAL." Sunday School Class of Trinity Church,  
In School of Rev. J. W. Perry, Boston.  
Tarboro', N. C.

FORTY SCHOLARSHIPS in MISSION DAY SCHOOLS in North Carolina, South Carolina and Georgia. Given by various parishes and individuals.

\$2.00 each.

TWELVE SCHOLARSHIPS in COOKING SCHOOL in ST. CYPRIAN'S MISSION, Franklin, North Carolina. Given by various parishes and individuals.

## FOREIGN DIVISION.

ST. JOHN'S COLLEGE, *Shanghai, China.*

"LYDIA MARY FAY MEMORIAL." Massachusetts Branch Woman's Auxiliary  
Endowed, \$1,500.

DIVINITY SCHOLARSHIP, *Tokyo, Japan.*

"HORATIO CHICKERING."

Endowed, \$1,200.

ST. MARY'S HALL, *Shanghai, China.*

\$50.00.

"CHRISTIAN RENTON LORING MEM'L." "A Member" of Trinity Church, Boston.

EMMA JONES SCHOOL, *Shanghai, China.*

\$50.00.

"SARAH F. HOYT MEMORIAL." St. John's Memorial Church, Cambridge.  
"ST. PAUL'S SUNDAY SCHOOL." Sunday School, St. Paul's Church, Boston.

ST. PAUL'S COLLEGE, *Tokyo, Japan.*

\$50.00.

"BISHOP B. H. PADDOCK MEMORIAL." A few Ladies of St. Paul's Church, Boston.

ST. MARGARET'S SCHOOL, *Tokyo, Japan.*

\$50.00.

"ST. ANNE'S." Sunday School, St. Anne's Church, Lowell.

HOLY TRINITY ORPHANAGE, *Tokyo, Japan.*

\$30.00.

ONE SCHOLARSHIP.

A Friend.

ELIZABETH BUNN MEMORIAL HOSPITAL, *Wuchang, China.*

\$30.00.

ONE BED.

Member of Trinity Church, Boston.

ST. MARY'S ORPHANAGE, *Shanghai, China.*

\$30.00.

"ELIZABETH CRIB."

"A Member," Emmanuel Church, Boston.

"LOVING FRIENDS' CRIB."

Massachusetts Branch Woman's Auxiliary.

"CHRISTINA CRIB."

Member of St. Paul's Church, Boston.

FEMALE ORPHAN ASYLUM AND GIRLS' SCHOOL, *Cape Palmas, Africa.*

\$50.00.

"SARAH F. HOYT MEMORIAL."

Emmanuel Church, Boston.

"ASCENSION."

S. S., Church of the Ascension, Fall River.

SCHOOL AT "ELIZA F. DRURY" MEMORIAL STATION, *Africa.*

\$25.00.

"NEWTON WENTWORTH."

Grace Church, Newton.

ST. JOHN'S MISSION SCHOOL, *Cape Mount, Africa.*

\$25.00.

"FRANCES A. CARYL MEMORIAL."

"A Member," Trinity Church, Boston.

"HELEN RHETT PEARSON MEMO."

Emmanuel Church, West Roxbury.

## INSURANCE DUES.

Paid by Emmanuel Church, Boston.

For RT. REV. S. D. FERGUSON, Africa . . . . .	\$50 00
" DR. HENRY LANING, Japan . . . . .	50 00
" REV. GOUVERNEUR F. MOSHER, China . . . . .	50 00
	<hr/>
	\$150 00

For T. S. TYNG, Japan. Paid by

Christ Church, Cambridge . . . . .	\$12 50
St. John's Memorial Church, Cambridge . . . . .	12 50
St. James's Church . . . . .	12 50
St. Philip's Church, Cambridge . . . . .	6 25
"Friends" . . . . .	6 25
	<hr/>
	\$50.00

## SUPPORT OF BIBLE WOMEN IN CHINA.

MEMORIAL TO MISS WILSON.

Given by Mass. Branch Woman's Auxiliary.

## MEXICO AND HAITI DIVISION.

M. J. HOOKER MEMORIAL ORPHANAGE, *Mexico.*

Name of Scholarship.

Supported by

"THANKSGIVING."

{ Member of St. James's Church, Cambridge,  
Mass.

## PLEDGES OF COMMITTEES.

1903-1904.

### DOMESTIC AND DIOCESAN MISSIONS.

Miss Carter's salary . . . . .	\$600.
Miss King's salary . . . . .	600.
Assistance to Bishop of Porto Rico . . . . .	

### INDIAN AND COLORED PEOPLE'S MISSIONS.

Ten Scholarships in Indian Schools, So. Dak. (\$60 each) . . . . .	600.
One Indian Scholarship in Hamilton, Va. . . . .	70.
Special needs of Indian Work . . . . .	150.
Hospital work at Ft. Defiance, Ari., and Oneida, Wis. . . . .	125.
Bishop Leonard's Indian work among Utes and Piutes . . . . .	100.
Bishop Brooke's Indian work in Oklahoma . . . . .	100.
Bishop Gray's Indian work in South Florida . . . . .	50.
Bishop Funston's Shoshone Mission . . . . .	50.
Salaries of Miss Sabine and Mrs. Evans, Anvik, Alaska . . . . .	200.
Salary of Miss Woods, Circle City, Alaska . . . . .	50.
Miss Carter's Lace Schools, Minn. . . . .	50.
Salary of Miss Wheeler, St. Augustine's School, Raleigh, N. C. . . . .	200.
Cooking School at Franklin, N. C. . . . .	25.
St. Paul's School, Lawrenceville, Va. . . . .	200.
Schools in South Carolina under Archdeacon Joyner . . . . .	150.
Schools in Georgia under Bishop Nelson . . . . .	50.
Salary of a teacher, Tarboro', N. C. . . . .	100.

### FOREIGN MISSIONS.

Insurance dues for four Missionaries . . . . .	200.
Salary of Miss Woodruff, Cape Mount, Africa . . . . .	450.
Part of salary of Miss Wall, Tokyo, Japan . . . . .	250.
Five Scholarships for Schools in Africa . . . . .	175.
Three Scholarships for Schools in China . . . . .	150.
Three Cribs in Orphanage at Shanghai, China . . . . .	90.
Three Scholarships for Schools in Japan . . . . .	130.
Support of Miss Koo, Bible Woman in China . . . . .	43.
Bed in Hospital in China . . . . .	30.

## HAITI AND MEXICAN MISSIONS.

Towards salary of Rev. Mr. Forrester	.	.	.	.	.	.	.	.	.
“ “ “ Miss Driggs	.	.	.	.	.	.	.	.	.
M. J. Hooker Memorial Orphanage	.	.	.	.	.	.	.	.	.
Dean Gray Memorial School	.	.	.	.	.	.	.	.	.
Towards salaries of Mexican Clergy	.	.	.	.	.	.	.	.	.
Emergency Fund	.	.	.	.	.	.	.	.	.
Towards the work of Bishop Holly, Haiti	.	.	.	.	.	.	.	.	.
“ “ “ in Brazil	.	.	.	.	.	.	.	.	.

## SPECIAL NOTICE.

Every Parish Branch is earnestly requested to make its proportionate contribution to the Current Expense Fund:— (printing of reports, freight, postage, etc.).

## BOXES.

Boxes are needed:—

For Families of Missionaries.

“ Indian Catechists.

“ Poor Whites of the South.

For Christmas Festivals.

For sale in Mission Shops.

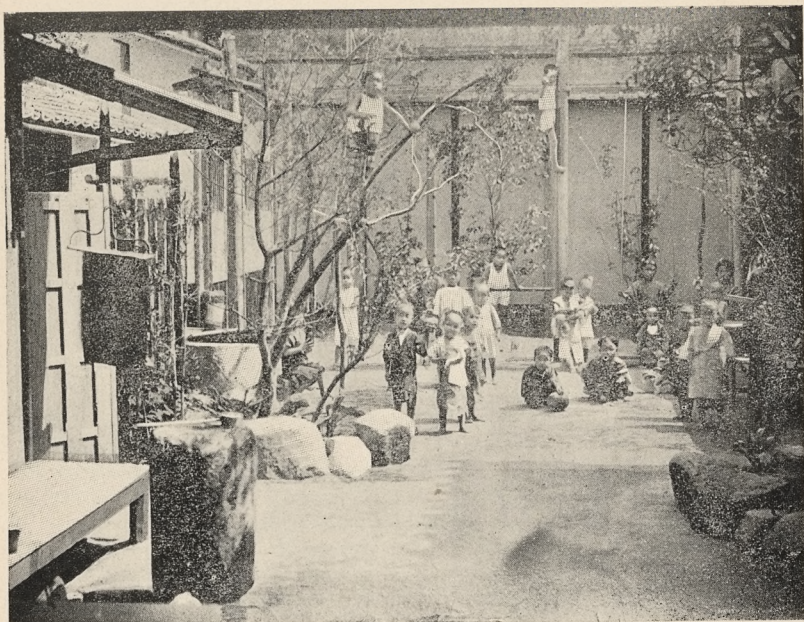
“ Hospitals.

“ Schools.

# REPORT OF THE JUNIOR AUXILIARY.

DIOCESE OF MASSACHUSETTS.

1902-1903.



PLAY GROUND OF ST. JOHN'S ORPHANAGE, AT OSAKA, JAPAN.

## Officers.

---

*Chairman*, — MISS L. C. STURGIS,  
*29 Hereford Street, Boston.*

*Secretary*, — MISS CAROLINE A. DERBY,  
*"The Ludlow," Copley Square, Boston.*

*Treasurer*, — MRS. MALCOLM STORER,  
*5 Brimmer Street, Boston.*

## REPORT FOR THE YEAR 1902-1903.

---

ONCE more a report of slow but steady growth can be made for the Junior department of the Woman's Auxiliary in Massachusetts. Eight new branches have been added since December, 1902, and the work in the older branches is going on smoothly and satisfactorily.

A promising augury for future progress is the constantly increasing sympathy between the Juniors and the Woman's Auxiliary. This is very much as it should be; for, if the Juniors are endeavoring to do their part consistently as a department of the Woman's Auxiliary, it is most natural and reasonable that the elder society should give them all the help and encouragement possible. The fact that it is so, however, seems to show that the result desired, at the time when the division was made between the Sunday Schools and the Junior Auxiliary, has been attained. Not only has the division proved of great benefit to the Sunday Schools, but the Junior Branches have naturally taken their proper position as actively and closely connected with the Woman's Auxiliary. That this is appreciated by the senior society would seem to be proved by the fact that four of the Junior Branches formed during the past year were started by members of the Woman's Auxiliary in their parishes.

The autumn and spring meetings of Junior officers were held as usual in November and February, in the parish rooms of St. Paul's Church, Boston. The attendance was good, and the advantage of having these meetings was made apparent by the number of interesting and suggestive ideas that were brought up for informal discussion. In the autumn an effort was made to draw the Branches more closely together in united gifts to the Alaskan Scholarship, and to General Missions. For the past two years there had been a deficit in the Alaskan Scholarship Fund, which had to be made up by large individual gifts. To avoid this difficulty it was decided at the November meeting that the committee should divide the Scholarship on the apportionment plan among the Branches. The result has been satisfactory, both as to the completion of the Scholarship, and as the united effort of the Auxiliary. The contribution to General Missions has also increased, and, it is to be hoped will continue to do so, as the feeling seems to be spreading that the Junior department should bear its share in the responsibility which rests upon the Woman's Auxiliary; and help as it can, with the general work carried on through the Board of Missions.

In the Spring, the Junior officers were invited to join in the conference of the Woman's Auxiliary; the subject chosen being that of preparation for the General Convention of 1904, and of interest to Seniors and Juniors alike. Papers were read upon the first convention held in Boston, and the convention of 1901 held in San Francisco, and plans for the coming convention in Boston were explained and discussed. It was urged that both on the part of Seniors and Juniors every effort should be made during the coming year to stir up the women and children of our Church in Massachusetts, and give them an idea of the opportunities that will be open to them next autumn.

The sixth annual Junior meeting was held in Emmanuel Chapel, Boston, on Saturday, May 9th, and the experiment was tried of having a short report read by the secretary of each Branch represented in the meeting. Twenty-five reports were read, the time allowance for each being two minutes, and the result was pronounced to be most successful. The Rev. Carleton F. Mills presided, and opened the meeting with a short address, and the other speakers were Miss Mahoney from Cape Mount, Africa, and Miss Sturgis. An exhibit of work done by Juniors during the year was held in connection with the meeting, specimen articles being sent in by ten of the Branches. This proved to be sufficiently full of interest to those who attended the meeting, to justify a repetition of this part of the programme next spring, and it is to be hoped that the Branch officers will bear this in mind during the winter, in case any suggestive ideas as to work are successfully carried out by their Branches.

In looking over this report, while we may take comfortable satisfaction in the work which we feel has been well done, let us remember that everything successfully accomplished only lays the foundation for further and more faithful effort if we are to keep pace with the growing opportunities and necessities of the cause we serve; and above all, let us keep steadily before us the realization that it is the spirit back of the work which counts in the long run, and keeping the order of our Junior rules, *pray* constantly, *study* earnestly, and *work* diligently for the coming of Our Lord's Kingdom.

L. C. STURGIS,  
*Chairman.*

## TREASURER'S REPORT.

GRACE AYRAULT STORER, *in account with Massachusetts Junior  
Auxiliary.*

**Dr.**

<i>Beachmont.</i> —St. Paul's Church.			
	Alaskan Scholarship . . . . .		\$ 1 40
<i>Boston.</i> —St. Paul's Church.			
	Alaskan Scholarship . . . . .	\$ 3 00	
	General Missions . . . . .	1 00	4 00
" St. Stephen's Church.			
	Alaskan Scholarship . . . . .	10 00	
	Bishop Brent . . . . .	20 00	
	Hospital, Skagway, Alaska . . . . .	10 00	40 00
<i>Brockton.</i> —St. Paul's Church.			
	Alaskan Scholarship . . . . .		2 00
<i>Brookline.</i> —St. Paul's Church.			
	Alaskan Scholarship . . . . .	5 00	
	Episcopal City Mission . . . . .	2 00	
	Miss Dodson, for Orphanage Fund . . . . .	2 00	9 00
<i>Cambridge.</i> —Christ Church.			
	Alaskan Scholarship . . . . .		2 00
" St. Peter's Church.			
	Alaskan Scholarship . . . . .		1 00
" St. Philip's Church.			
	Alaskan Scholarship . . . . .	5 00	
	Miss Evans's Salary, Alaska . . . . .	17 37	
	Education of a Child in Africa . . . . .	5 00	27 37
<i>Concord.</i> —Trinity Sunday School.			
	Alaskan Scholarship . . . . .	3 00	
	"Loving Friends Crib," Shanghai . . . . .	2 00	
	General Missions . . . . .	1 00	6 00
<i>Dedham.</i> —St. Paul's Church.			
	Alaskan Scholarship . . . . .	2 00	
	Scholarship for Jack Wolford, St. Paul's School, Beaufort . . . . .	10 00	12 00
<i>Dorchester.</i> —St. Mary's Church.			
	Alaskan Scholarship . . . . .		5 00
<i>East Boston.</i> —St. Mary's Church.			
	Alaskan Scholarship . . . . .		2 00
" St. John's Church.			
	Alaskan Scholarship . . . . .		1 00
<i>Fall River.</i> —St. John's Church.			
	Alaskan Scholarship . . . . .		1 00
" St. Luke's Church.			
	Alaskan Scholarship . . . . .		2 00
<i>Hingham.</i> —Church of St. John the Evangelist.			
	Alaskan Scholarship . . . . .	2 00	
	General Missions . . . . .	2 00	4 00
<i>Lawrence.</i> —Grace Church.			
	Alaskan Scholarship . . . . .	3 00	
	St. Paul's School, Beaufort . . . . .	10 00	
	Children's Home, Lawrence . . . . .	10 00	
	Miss DeLongy, Missouri . . . . .	5 00	
	General Missions . . . . .	10 00	38 00
<i>Melrose.</i> —Trinity Church.			
	Alaskan Scholarship . . . . .	1 00	
	All Saints Hospital, Spring Hill, Nova Scotia . . . . .	5 00	6 00
<i>Amount carried forward,</i>			<u>\$163 77</u>

		<i>Amount brought forward,</i>	\$163 77
<i>New Bedford.</i> —Grace Church.			
	Alaskan Scholarship . . . . .	\$5 00	
	Lawrenceville, Va. . . . .	1 00	
	Cooking School, Franklin, N. C. . . . .	2 00	
	Orphanage, Shanghai . . . . .	2 00	
	Orphanage, Japan . . . . .	2 00	
	Work in Africa . . . . .	2 00	14 00
“ St. Martin’s.			
	Alaskan Scholarship . . . . .		1 00
<i>Newton.</i> —Grace Church.			
	Alaskan Scholarship . . . . .	3 00	
	General Missions . . . . .	1 00	
	All Saints Hospital, Nova Scotia . . . . .	5 00	9 00
<i>Newton Highlands.</i>			
	Alaskan Scholarship . . . . .	4 00	
	St. Mary’s Orphanage, Shanghai . . . . .	5 00	
	General Missions . . . . .	2 75	11 75
<i>Newton Lower Falls.</i> —St. Mary’s Church.			
	Alaskan Scholarship . . . . .	2 00	
	Scholarship in St. Mary’s Hall, Shanghai . . . . .	10 00	12 00
<i>North Attleboro’.</i> —Grace Church.			
	Alaskan Scholarship . . . . .		2 00
<i>Plymouth.</i> —Christ Church.			
	Alaskan Scholarship . . . . .		5 00
<i>Roxbury.</i> —St. James’s Church.			
	Alaskan Scholarship . . . . .		2 00
“ St. John’s Church.			
	Alaskan Scholarship . . . . .	5 00	
	Scholarship in St. Paul’s School, Beaufort, N. C. . . . .	5 00	10 00
<i>Salem.</i> —Grace Church.			
	Alaskan Scholarship . . . . .		2 00
<i>South Boston.</i> —St. Matthew’s Church.			
	Alaskan Scholarship . . . . .	2 00	
	Deficit in Alaskan Scholarship, 1902 . . . . .	2 00	4 00
<i>Watertown.</i> —Church of the Good Shepherd.			
	Alaskan Scholarship . . . . .	2 00	
	General Missions . . . . .	2 76	4 76
<i>Wollaston.</i> —St. Chrysostom’s Church.			
	Alaskan Scholarship . . . . .	2 00	2 00
From Friends, for the Alaskan Scholarship . . . . .			11 60
			<hr/> \$254 88

**Credit.**

Sent to Foreign Missions . . . . .	\$ 40 00	
“ “ Domestic Missions . . . . .	79 37	
“ “ Diocesan Missions . . . . .	10 00	
“ “ Episcopal City Mission . . . . .	2 00	
“ “ General Missions . . . . .	20 51	
“ “ Colored and Indian Missions . . . . .	3 00	
“ “ Alaskan Scholarship . . . . .	100 00	
	<hr/>	\$254 88

GRACE AYRAULT STORER,

*Treasurer.*

Audited and found correct.

E. JAMES LORING.

## LIST OF BOXES, WITH VALUATIONS.

CAMBRIDGE.—*St. Peter's Church*.—One half barrel to Rev. E. Ashley, S. Dakota, \$26.27.

DEDHAM.—*St. Paul's Church*.—Christmas box to Jack Wolford, St. Paul's School, Beaufort, N. C.

DORCHESTER.—*St. Mary's Church*.—Episcopal City Mission, \$5.00. To Archdeacon Spurr, W. Virginia, \$37.00. Total, \$42.00.

LAWRENCE.—*Grace Church*.—To Children's Home, Lawrence, \$15.00.

NEW BEDFORD.—*Grace Church*.—To Alaska, \$29.38.

NEWTON.—*Grace Church*.—To Bishop Mann, N. Dakota, \$1.60. Half box to Rev. E. Ashley, S. D., \$14.00. Total, \$15.60.

NEWTON LOWER FALLS.—*St. Mary's Church*.—Episcopal City Mission, \$10.00. Part of box sent by St. Mary's Church, \$5.00. Total, \$15.00.

PLYMOUTH.—*Christ Church*.—Rev. Edward Ashley, S. D., \$30.25. St. Monica's Home, Boston, \$18.00. Presents for African box, \$3.75. Total, \$52.00.

ROXBURY.—*St. John's Church*.—To St. Paul's School, Beaufort, N. C., \$135.00.

SHARON.—*St. John's Church*.—To Archdeacon Russell, \$5.00.

SOUTH BOSTON.—*St. Matthew's Church*.—To Rev. Edward Ashley, S. D., \$16.00.

WOLLASTON.—*St. Chrysostom's Church*.—To Oneida, Wisconsin, \$8.15. Box to Miss Groves, \$8.35. Box to Miss Libby, Washington, D. C., \$3.00. Total, \$19.50.

Total valuation, \$374.75.

## GENERAL EXPENSES.

Boston.—St. Paul's Church,	\$1.00	Roxbury.—St. John's Church,	\$1.00
“ St. Stephen's Church,	2.00	South Boston.—St. Matthew's	
Boookline.—St. Paul's Church,	1.00	Church,	1.00
Brockton.—St. Paul's Church,	1.00	Watertown.—Church of the	
Cambridge.—St. Peter's Church,	1.00	Good Shepherd,	1.00
Concord.—Trinity Sunday School,	1.00	Wollaston.—St. Chrysostom's	
Dedham.—St. Paul's Church,	1.00	Church,	1.00
Dorchester.—St. Mary's Church,	1.00		
East Boston.—St. John's Church,	1.00		\$23.00
“ “ St. Mary's Church,	1.00	On hand (Sept., 1902) for Gen-	
Fall River.—St. John's Church,	1.00	eral Expenses,	1.16
Hingham.—St. John the Evangelist,	1.00		
Melrose.—Trinity Church,	1.00		\$24.16
New Bedford.—Grace Church,	1.00	Paid out for General Expenses,	22.61
Newton.—Grace Church,	1.00		
Newton Highlands,	1.00	On hand for General Expenses,	
Plymouth.—Christ Church,	2.00	Sept. 1st, 1903,	\$1.55

GRACE AYRAULT STORER, *Treasurer*.

## TOTALS.

Total amount of money sent to Missions, 1903 . . . . .	\$254.88
Total amount given, \$277.88, divided as follows :	
Foreign Mission . . . . .	\$40.00
Domestic Missions . . . . .	79.37
Diocesan Missions . . . . .	10.00
Colored and Indian Missions . . . . .	3.00
Episcopal City Missions . . . . .	2.00
General Missions . . . . .	20.51
Alaskan Scholarship . . . . .	100.00
Given for General Expenses . . . . .	23.00
	<hr/>
	\$277.88

---

Total value of Boxes sent, 1903 . . . . .	\$374.75
---	----------

## Divided as follows :

Foreign Missions, 1 box . . . . .	\$3.75
Domestic Missions, 15 boxes . . . . .	323.00
Diocesan Missions, 2 boxes . . . . .	33.00
Episcopal City Mission, 2 boxes . . . . .	15.00
	<hr/>
	\$374.75

---

There are forty-eight Branches of the Junior Auxiliary in Eastern Massachusetts.  
 In 1903, thirty-four Branches gave or worked for Missions.  
     Thirty-three Branches gave money.  
     Thirteen Branches gave boxes or parts of boxes.

FORM OF BEQUEST.

---

I give, devise and bequeath to the Domestic and Foreign Missionary Society of the Protestant Episcopal Church in the United States of America, to be expended under the suggestion of the Massachusetts Branch of the Woman's Auxiliary.

# GIFTS OF MASSACHUSETTS ALTAR SOCIETY.

SEPTEMBER 1, 1902 — JULY 1, 1903.

During the past year gifts have been sent to 37 places in 21 Dioceses and Missionary Districts.

DIocese.	PLACE.	NAME.	ARTICLE.	VALUE.
Arkansas.	Barton.	Mrs. R. B. Eggleston.	Material Black Stole.	\$ 1.50
Arkansas.	Little Rock.	Rev. William A. Fair.	Set of Stoles.	10.00
Arkansas.	Little Rock.	Miss Mattie Gooch.	Bookmarks and Stamping.	2.15
Arkansas.	Monticello.	Dr. Alexander Crawford.	Cassock and Cotta.	15.50
Brazil.	Jagnarao, Rio Grande Del Sol.	Deaconess Maria R. Pitts.	Altar Linen.	7.50
N. Carolina.	Charlotte.	Rev. P. P. Alston.	2 Stoles.	5.00
N. Carolina.	Clinton.	Rev. Fred N. Skinner.	Stole.	2.50
N. Carolina.	Morgantown.	Grace Church.	2 Stoles.	5.00
Colorado.	Denver.	Rev. Percival S. Smith.	Set of Stoles.	10.00
S. Dakota.	Cheyenne Agency.	Rev. E. Ashley.	Work on 2 sets Hangings.	40.00
S. Dakota.	Standing Rock Mission.	Rev. P. J. Deloria.	2 Stoles.	5.00
Georgia.	Augusta.	Rev. W. J. Page.	Cassock and Cotta.	15.50
Haiti.	Aux Cayes.	Rev. E. C. Benedict.	Stole.	3.00
Kansas.	Coffeyville.	Rev. Edwin Dent.	Communion Silver.	17.00
Kansas.	Eureka.	Rev. F. C. Armstrong.	Stole.	2.50
Kansas.	Kansas City.	Rev. Robert M. Botting.	Cassock and Cotta.	15.50
Kansas.	Newton.	Rev. A. F. Randall.	Chasuble.	10.00
Kansas.	Oskaloosa.	Rev. Carroll M. Bursch.	Altar Linen and Sur- plice.	15.50
Kentucky.	Middlesboro'.	Rev. Wm. C. Sheppard.	Cassock.	10.00
Louisiana.	New Orleans.	Rev. Charles L. Wells.	Pattern for Surplice.	1.50
Massachusetts.	Beachmont.	Rev. Francis A. Foxcroft.	Communion Silver and Cruets.	19.00
Massachusetts.	Boston.	Rev. C. R. Hilliard.	3 Stoles.	7.50
Massachusetts.	Boston.	Rev. Mr. Rocca.	Stole, Maniple, Chal- ice Veil, Burse and Facing Chasuble.	16.50
Massachusetts.	Saugus.	Rev. F. L. Blake.	Materials for Dos- sals.	9.00
Massachusetts.	Wilkinsonville.	Rev. Samuel Hodgkiss.	Set of Stoles.	10.00
Minnesota.	Kasson.	Rev. Charles A. Eaton.	Surplice and set of Stoles.	18.00
Nebraska.	Santee Agency.	Rev. William Holmes.	Stole.	2.50
New Mexico.	Santa Fé.	Mrs. George A. Shepard.	Mat for Violet Altar Cloth.	7.45
Oklahoma.	Shawnee.	Rev. John Hartley.	3 Stoles and Altar Linen.	15.00
Olympia.	Seattle.	Rev. E. J. H. Van Durlin.	Cassock.	10.00
Oregon.	Sumpter.	Rev. M. J. Goodheart.	Surplice.	8.00
Philippine Is- lands.	Manila.	Settlement House.	Altar Linen.	10.00
Porto Rico.	San Juan.	Rev. F. F. Flewelling.	Altar Hangings and Linen.	19.00
Texas.	Dallas.	Bishop Garrett.	Communion Service and Wafer Box in Case.	25.50
Utah.	Salt Lake.	Bishop Leonard, for Mr. L. B. Johnson.	Cassock.	10.00
Virginia.	Gordonsville.	Rev. J. R. Ellis.	Stole.	3.00
Virginia.	Bracey.	Rev. John B. Brown.	Cassock and Sur- plice.	18.00
Express and Postage, approximately,				15.00
				\$302.10

OLGA E. MONKS, *Treasurer.*



